



Hunt Estates

Three Bedroom, Two Bathroom Granite Cottage
Trinity, Jersey

THREE BEDROOM, TWO BATHROOM GRANITE COTTAGE IN A DELIGHTFUL HAMLET SETTING

This beautifully presented three double bedroom granite cottage is located within a courtyard setting adjacent to the award-winning Trinity Manor dairy farm.

One of a small number of similar cottages in this idyllic rural hamlet approached by a long driveway with grazing meadows either side.

The cottage has an enclosed paved garden area as well as a lawned garden and a double garage, with further parking for one car to the front of the garage.

The recently redecorated accommodation comprises on the ground floor: fully fitted kitchen with an external part glazed door to the paved garden, separate dining room, sitting room and cloakroom.

On the first floor there are three double bedrooms including a primary bedroom with an adjacent dressing room leading to an ensuite.

Regret no dogs accepted. Available immediately.

















FEATURES

- Three double bedrooms
- Two bathrooms and cloaks
- Attractive terraced granite cottage
- Paved garden & lawn
- Idyllic hamlet setting
- Available immediately

INFORMATION

- All mains' services (excluding gas)
- Oil fired central heating
- Electric heating
- Double glazed
- Regret no dogs accepted
- Double garage and parking for 1 car
- Occupier rates for 2024 were £331.44
- Available to Entitled/ Licensed residents
- Please note that the equivalent of one months' rent is required for the deposit



David Voak MNAEA
Property Negotiator

david@huntstates.com
T +44 (0)7797 725621
www.huntstates.com
9 New Street, St Helier,
Jersey, JE2 3RA

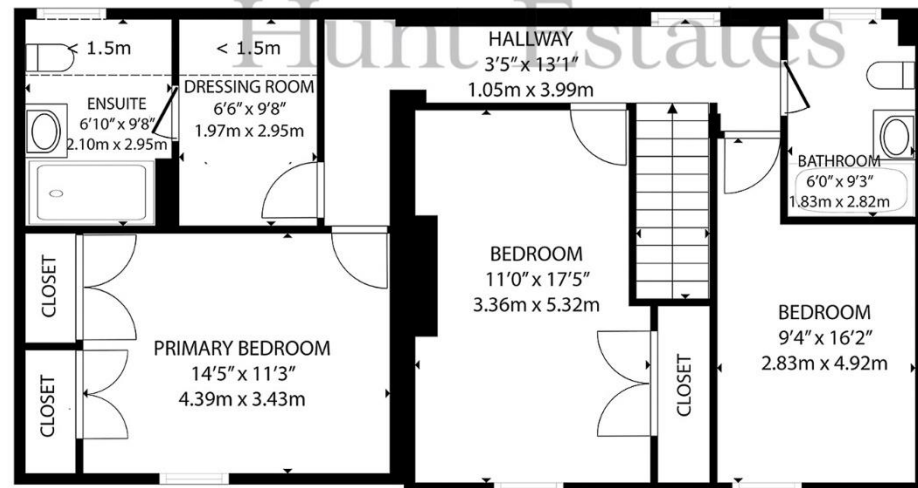
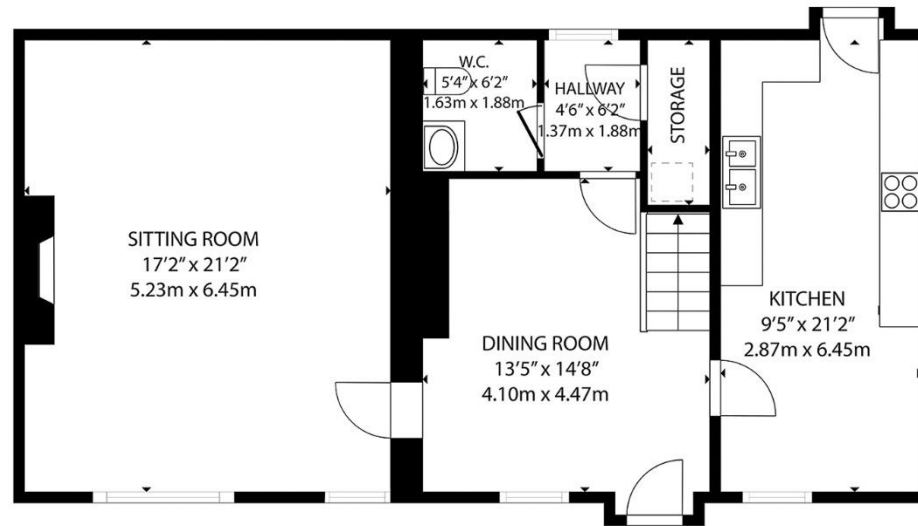
CHRISTIE'S | Hunt Estates
INTERNATIONAL REAL ESTATE



Gill Hunt, FNAEA
Director

gill@huntstates.com
T +44 (0)7797 721881
www.huntstates.com
9 New Street, St Helier,
Jersey, JE2 3RA

CHRISTIE'S | Hunt Estates
INTERNATIONAL REAL ESTATE



GROSS INTERNAL AREA
 GROUND FLOOR: 897 sq. ft, 83.3 m², FIRST FLOOR: 862 sq. ft, 80.1 m²
 TOTAL: 1759 sq. ft, 163.4 m²

EXCLUDED AREAS: REDUCED HEADROOM BELOW 1.5M: 35 sq. ft, 3.3 m²

SIZES AND DIMENSIONS ARE APPROXIMATE, ACTUAL MAY VARY



Hunt Estates

9 New Street, St Helier, Jersey, JE2 3RA, Channel Islands | +44 1534 860650 | www.huntestates.com | enquiries@huntestates.com

Disclaimer: All information provided herein has been obtained from sources believed reliable, but may be subject to errors, omissions, change of price, prior sale, withdrawal without notice. Hunt Estates make no representation, warranty, or guarantee as to accuracy of any information contained herein. You should consult your advisors for an independent investigation of any properties. All viewings to be conducted through Hunt Estates.