



Hunt Estates

Recently Decorated Three Bedroom Family Home
St. Saviour, Jersey

RECENTLY DECORATED THREE BEDROOM FAMILY HOME

This well-maintained and recently redecorated home offers excellent comfort and space for family living. It features new flooring downstairs and fresh carpets upstairs, creating a modern and welcoming feel throughout.

The spacious sitting room flows seamlessly into a year-round usable conservatory, providing additional living space filled with natural light. The fitted kitchen, ideal for everyday use and entertaining, also offers potential for extension (subject to planning permission). It also benefits from direct access to the garden.

Upstairs, there are three generously sized double bedrooms, each with built-in wardrobes for ample storage. The family bathroom has been recently updated with a new bath and shower, and there's a convenient ground floor cloakroom.

Outside, you'll find a sunny, low-maintenance garden perfect for relaxing or outdoor dining.

There is a garage with loft storage and additional parking for 1 car.

Ideally located close to local shops, this property falls within the catchment area for St Martin's Primary School.

















FEATURES

- 3 double bedrooms
- 2 reception rooms
- Immaculate throughout
- Recently decorated
- Low maintenance garden
- Ample storage

INFORMATION

- Mains water and drains
- Oil fired central heating
- Double glazed
- Garage and parking for 1 car
- Parish rates for 2024 were £503
- Freehold and Entitled/Licensed



Gill Hunt, FNAEA
Director

gill@huntestates.com
T +44 (0)7797 721881
www.huntestates.com
9 New Street, St Helier,
Jersey, JE2 3RA

CHRISTIE'S | Hunt Estates
INTERNATIONAL REAL ESTATE

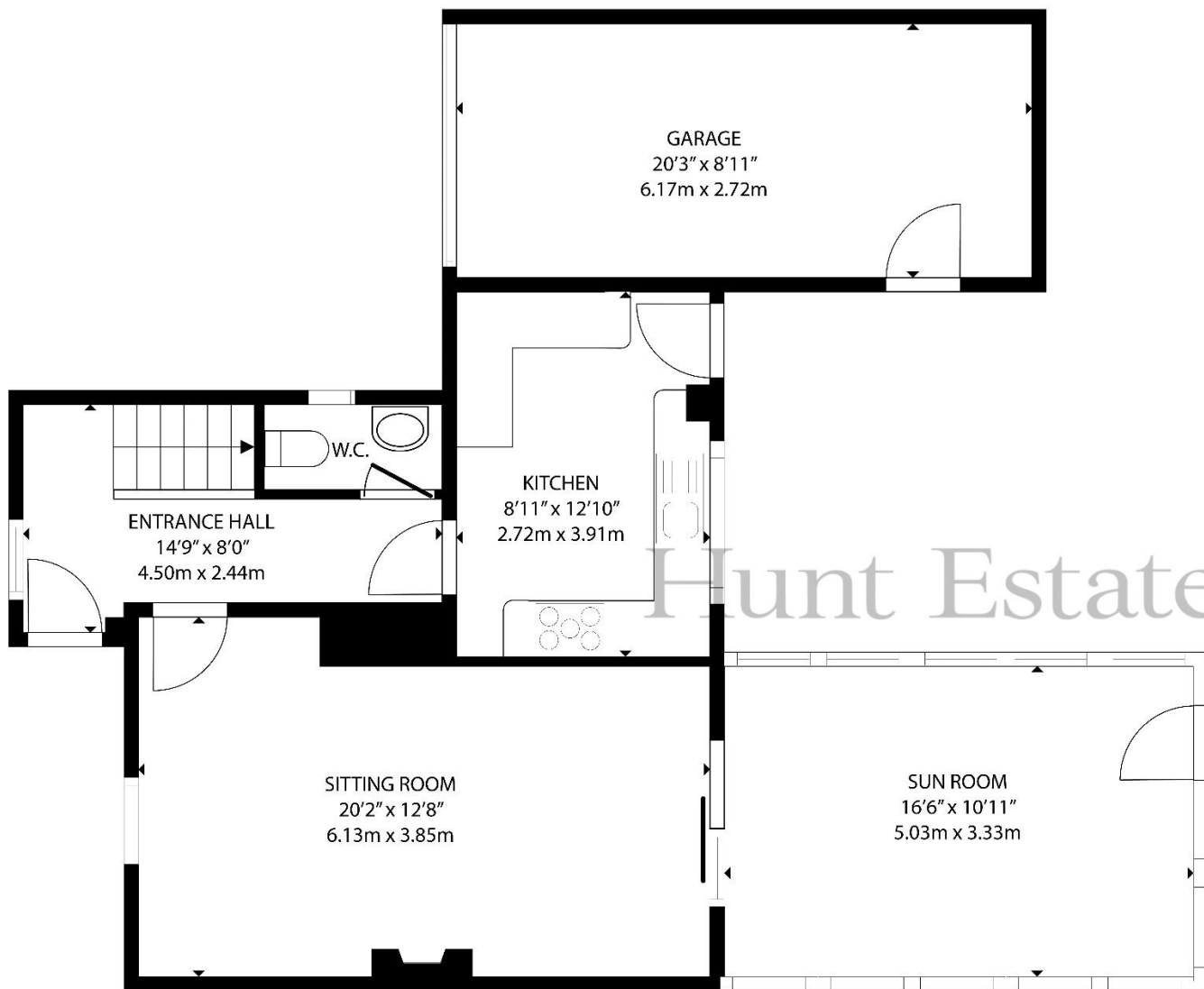


Sarah Gallichan
Property Negotiator

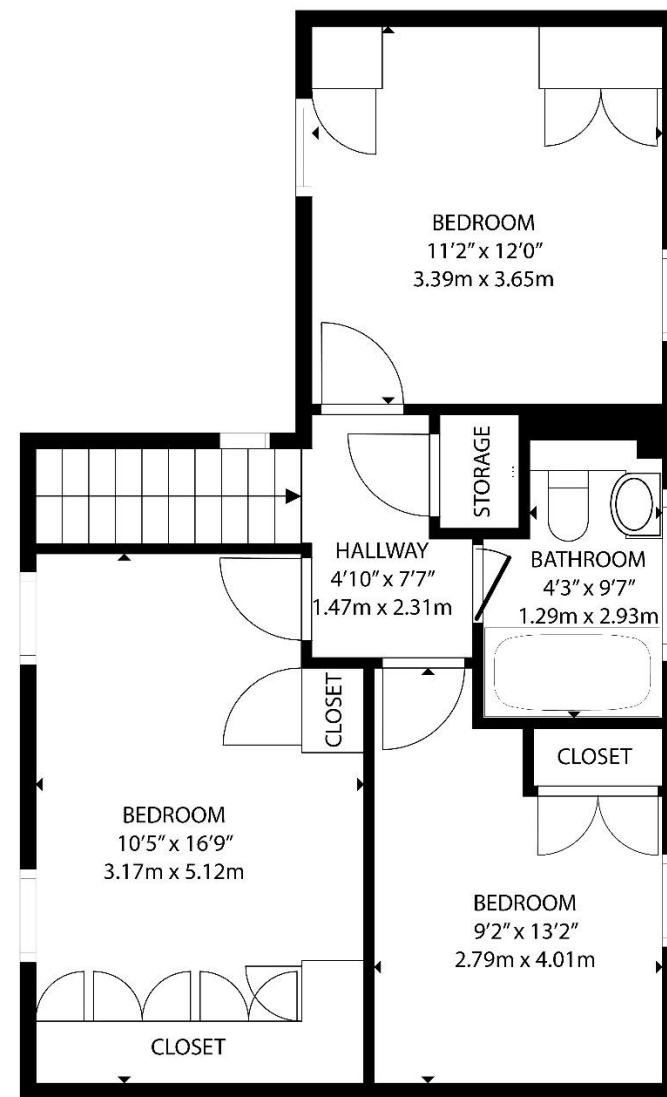
sarah@huntestates.com
T +44 (0)7700 713574
www.huntestates.com
9 New Street, St Helier,
Jersey, JE2 3RA

CHRISTIE'S | Hunt Estates
INTERNATIONAL REAL ESTATE





GROUND FLOOR



FIRST FLOOR

GROSS INTERNAL AREA
 GROUND FLOOR: 663 sq. ft, (61.6m²) FIRST FLOOR: 549 sq. ft (51.0 m²)
 TOTAL: 1212 sq. ft (112.6 m²)

EXCLUDED AREAS: GARAGE: 181 sq. ft, (16.8 m²)

SIZES AND DIMENSIONS ARE APPROXIMATE, ACTUAL MAY VARY

Hunt Estates

9 New Street, St Helier, Jersey, JE2 3RA, Channel Islands | +44 1534 860650 | www.huntestates.com | enquiries@huntestates.com

Disclaimer: All information provided herein has been obtained from sources believed reliable, but may be subject to errors, omissions, change of price, prior sale, withdrawal without notice. Hunt Estates make no representation, warranty, or guarantee as to accuracy of any information contained herein. You should consult your advisors for an independent investigation of any properties. All viewings to be conducted through Hunt Estates.