



Hunt Estates

Large Country Retreat Apartment  
St. Ouen, Jersey

## LARGE COUNTRY RETREAT APARTMENT

If you are looking to find a peaceful retreat apartment out west then this historic dairy farm building was cleverly converted back in 2010, then this could be the one for you.

This large bedroom apartment boasting approx. 620 sq ft is located in a peaceful country setting, offering high ceilings and expansive windows throughout the property that fill the space with natural light and enjoy open outlook over surrounding fields.

The open-plan layout connects a fully integrated kitchen, dining area, and living space, making it ideal for modern living. The bedroom is good size with built in wardrobes and access to the ensuite bathroom. There is a separate cloakroom and utility cupboard.

Additional features include a private garage with loft space and a separate external cupboard, providing practicable solutions for storage. Additional parking for 2 cars plus visitors.

Just a short drive away, is St Ouen's Village and you are also close to a number of beaches and the popular cafes.



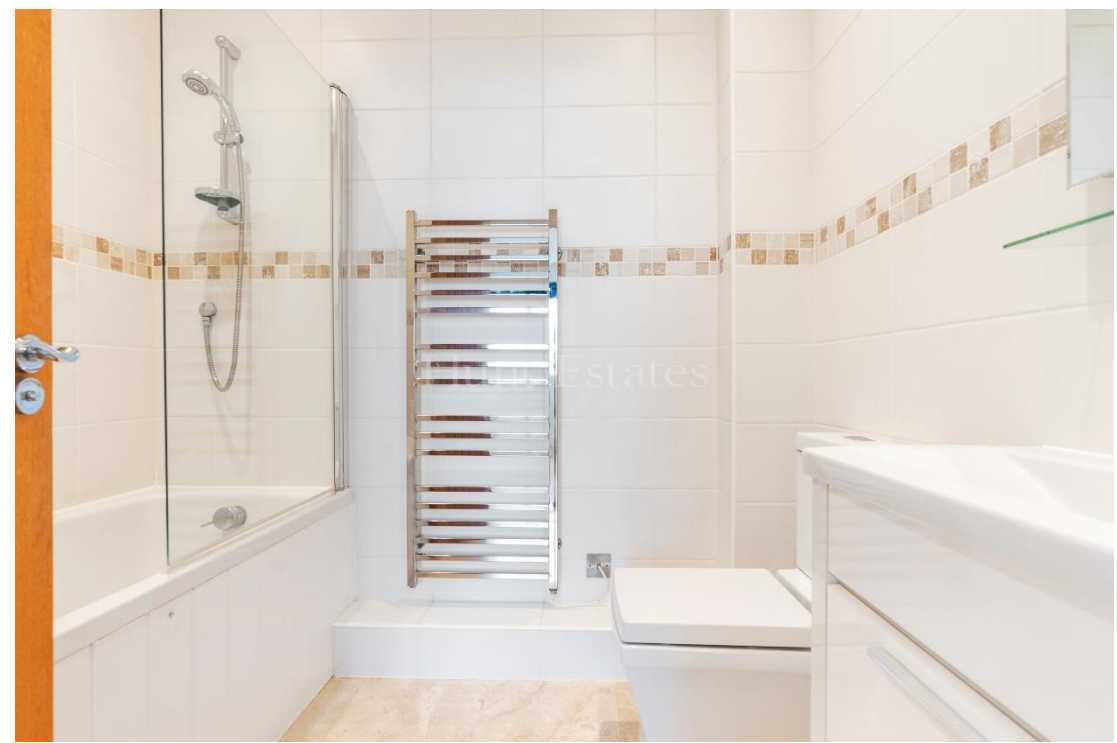














## FEATURES

- One bedroom apartment
- Approx 620 sq ft
- Large open plan living
- High ceilings
- Freshly decorated
- Peaceful location

## INFORMATION

- Mains water and drains
- Fully electric underfloor heating throughout
- Double glazed
- Pets considered
- Occupier rates approx. £205
- Garage & storage and additional parking for 2 cars
- Available to Entitled/Licensed residents
- Please note that the equivalent of one month's rent is required for the deposit



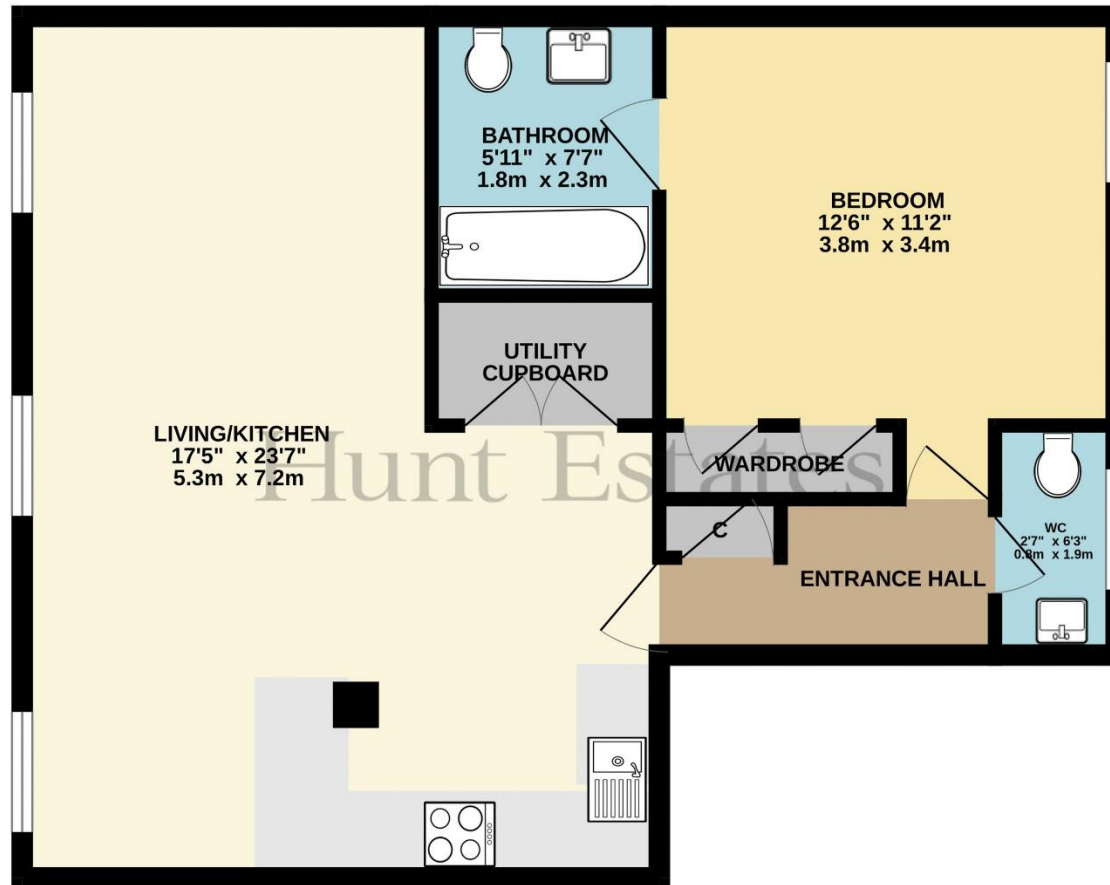
Gill Hunt, FNAEA  
Director

[gill@huntstates.com](mailto:gill@huntstates.com)  
T +44 (0)7797 721881  
[www.huntstates.com](http://www.huntstates.com)  
9 New Street, St Helier,  
Jersey, JE2 3RA

CHRISTIE'S INTERNATIONAL REAL ESTATE | Hunt Estates



FIRST FLOOR  
627 sq.ft. (58.2 sq.m.) approx.



TOTAL FLOOR AREA : 627 sq.ft. (58.2 sq.m.) approx.

Whilst every attempt has been made to ensure the accuracy of the floorplan contained here, measurements of doors, windows, rooms and any other items are approximate and no responsibility is taken for any error, omission or mis-statement. This plan is for illustrative purposes only and should be used as such by any prospective purchaser. The services, systems and appliances shown have not been tested and no guarantee as to their operability or efficiency can be given.  
Made with Metropix ©2024



# Hunt Estates

9 New Street, St Helier, Jersey, JE2 3RA, Channel Islands | +44 1534 860650 | [www.huntestates.com](http://www.huntestates.com) | [enquiries@huntestates.com](mailto:enquiries@huntestates.com)

Disclaimer: All information provided herein has been obtained from sources believed reliable, but may be subject to errors, omissions, change of price, prior sale, withdrawal without notice. Hunt Estates make no representation, warranty, or guarantee as to accuracy of any information contained herein. You should consult your advisors for an independent investigation of any properties. All viewings to be conducted through Hunt Estates.