



Hunt Estates

Character apartment with country views and two parking spaces
St. Saviour, Jersey

CHARACTER APARTMENT WITH COUNTRY VIEWS AND TWO PARKING

A character apartment in St Saviour. It is set in a small hamlet and with fields and surrounding countryside. There is a patio area by the front entrance door and a communal garden to enjoy some summer sun. It is a perfect easily managed property and a good lock-up-and-leave for those that enjoy travelling.

There are some granite and brick features as well as some wooden flooring all adding the character of this bijoux home.

Close by is a bus route, on Le Grande Route de St. Martin, the famous Maufant Stores with delicious food, and it is a few minutes' drive to St. Martin's Village where there is the Royal Pub, M&S Food Hall and a café.

Comprising: Sitting room with wooden flooring, kitchen with granite work surface, a breakfast bar, and doors opening to a patio area, double bedrooms, one with fitted wardrobes, and bathroom with bath and shower over.

The apartment also benefits from 2 parking spaces.









FEATURES

- Character apartment
- Set in a small hamlet with country views
- Communal garden
- Some granite and brick features

INFORMATION

- Mains water and drains
- Gas heating
- Underfloor heating
- Double glazed
- Boiled replaced October 2023
- Two allocated parking spaces
- Occupier rates were £254.41 for 2024
- Available immediately to Entitled/Licensed
- Please note that the equivalent of one month's rent will be required for the deposit

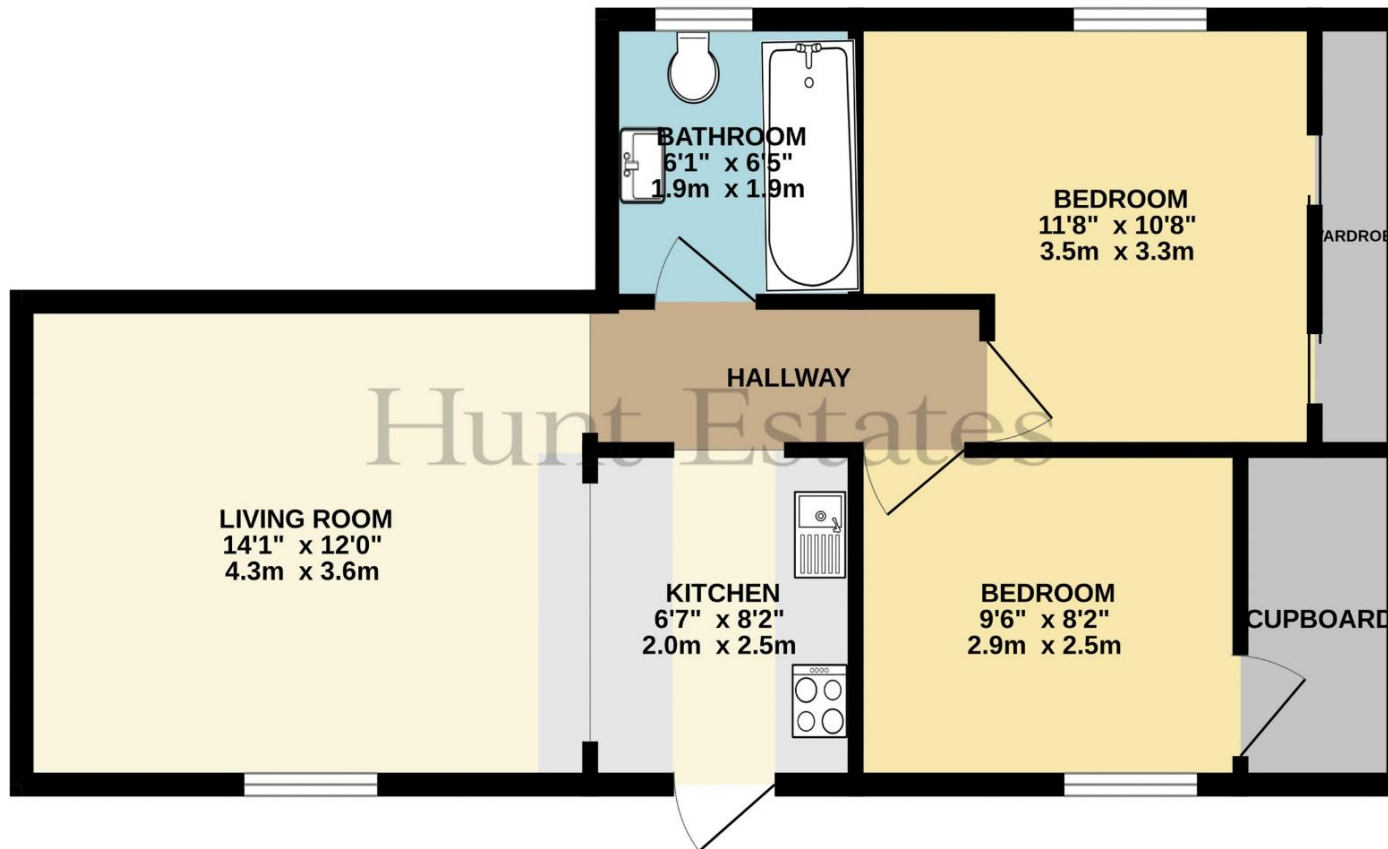


Gill Hunt, FNAEA
Director

gill@huntstates.com
T +44 (0)7797 721881
www.huntstates.com
9 New Street, St Helier,
Jersey, JE2 3RA

CHRISTIE'S | Hunt Estates
INTERNATIONAL REAL ESTATE

GROUND FLOOR
545 sq.ft. (50.6 sq.m.) approx.



TOTAL FLOOR AREA : 545 sq.ft. (50.6 sq.m.) approx.

Whilst every attempt has been made to ensure the accuracy of the floorplan contained here, measurements of doors, windows, rooms and any other items are approximate and no responsibility is taken for any error, omission or mis-statement. This plan is for illustrative purposes only and should be used as such by any prospective purchaser. The services, systems and appliances shown have not been tested and no guarantee as to their operability or efficiency can be given.

Made with Metropix ©2025

Hunt Estates

9 New Street, St Helier, Jersey, JE2 3RA, Channel Islands | +44 1534 860650 | www.huntestates.com | enquiries@huntestates.com

Disclaimer: All information provided herein has been obtained from sources believed reliable, but may be subject to errors, omissions, change of price, prior sale, withdrawal without notice. Hunt Estates make no representation, warranty, or guarantee as to accuracy of any information contained herein. You should consult your advisors for an independent investigation of any properties. All viewings to be conducted through Hunt Estates.