



NEW DETACHED HOME IN ST. BRELADE

A most desirable modern newly built home in popular residential location. This detached four-bedroom home offers approximately 1400 ft.² of accommodation and would suit a young couple or family, also those that want a low maintenance property. It is very well appointed throughout.

The bus, with a regular service, stops very close by. There is easy access to St. Aubin, Saint Brelade's shopping precinct with Waitrose, M&S, doctor surgery, cafés and HSBC bank. Also nearby is Mont Nicole School and further, Saint Brelade's Bay, Sports Centre, Quennevais School and the airport. There is something for all ages in this desirable area.

Comprising; entrance hall, coats cupboard, WC, 17.5 ft. sitting room with sliding doors to small patio, 21 ft kitchen dining room with two sets of sliding doors to the rear garden, allowing the light to flood in, and a utility room. The first floor provides four bedrooms and two bathrooms (one being ensuite).

The garden is walled and is low maintenance with enough space for a small gathering in the warmer months.

There is parking for 3 cars and a shared visitor space.

If you are looking for a tasteful contemporary home that you can move straight into, then this could be the one for you. We hold keys for ease of viewing.

















FEATURES

- New detached home
- Four bedrooms two bathrooms
- Manageable outside space
- Quality fittings throughout
- Many amenities close by
- Separate utility

INFORMATION

- Mains water and drains
- Electric heating via air sourced heat pump
- Double glazing
- Parking for 3 cars
- Integrated kitchen appliances
- Freehold and Entitled/Licensed

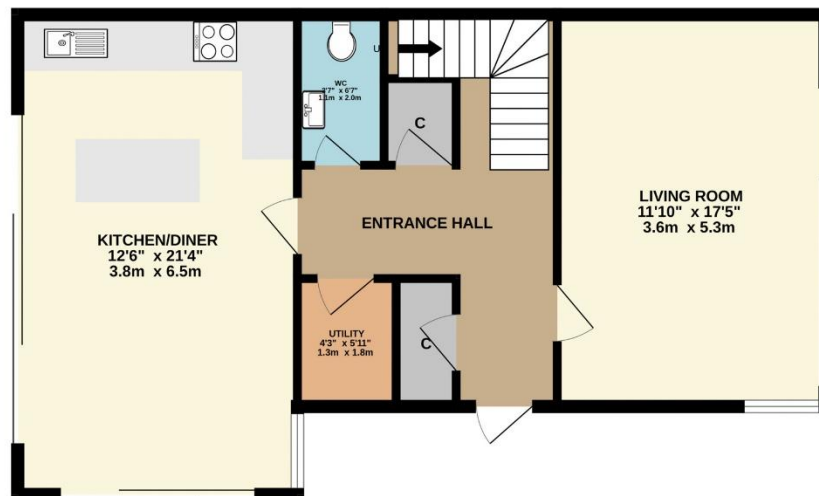


Gill Hunt, FNAEA
Director

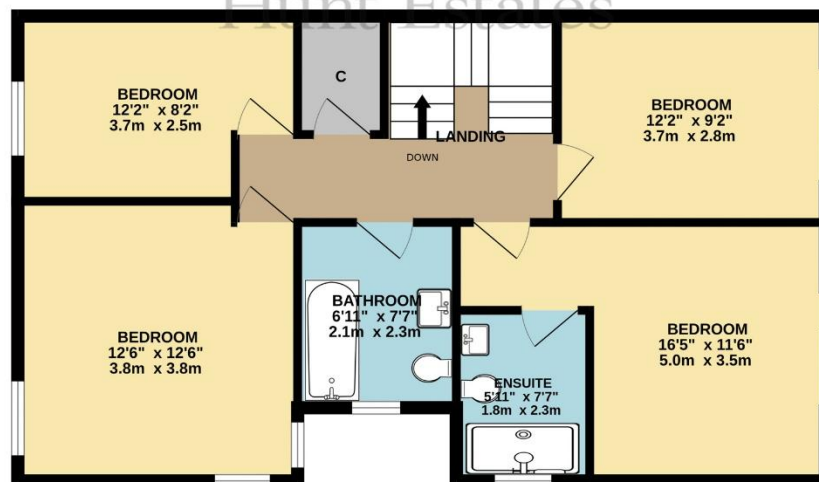
gill@huntstates.com
T +44 (0)7797 721881
www.huntstates.com
9 New Street, St Helier,
Jersey, JE2 3RA

CHRISTIE'S | Hunt Estates
INTERNATIONAL REAL ESTATE

GROUND FLOOR
691 sq.ft. (64.2 sq.m.) approx.



CHRISTIE'S
INTERNATIONAL REAL ESTATE
1ST FLOOR
694 sq.ft. (64.5 sq.m.) approx.



TOTAL FLOOR AREA : 1385sq.ft. (128.7 sq.m.) approx.

Whilst every attempt has been made to ensure the accuracy of the floorplan contained here, measurements of doors, windows, rooms and any other items are approximate and no responsibility is taken for any error, omission or mis-statement. This plan is for illustrative purposes only and should be used as such by any prospective purchaser. The services, systems and appliances shown have not been tested and no guarantee as to their operability or efficiency can be given.
Made with Metropix ©2024

As the selected exclusive affiliate of Christie's International Real Estate in Jersey, Channel Islands, Hunt Estates combines local expertise with global reach via Christie's affiliation to the most famous real estate companies in the world.

An invitation-only affiliate network, Christie's International Real Estate selected Hunt Estates in 2020 to represent the famous Christie's brand in the sphere of luxury real estate in Jersey.

CHRISTIE'S | Hunt Estates

INTERNATIONAL REAL ESTATE

9 New Street, St Helier, Jersey, JE2 3RA, Channel Islands | +44 1534 860650 | www.huntestates.com | enquiries@huntestates.com

Disclaimer: All information provided herein has been obtained from sources believed reliable, but may be subject to errors, omissions, change of price, prior sale, withdrawal without notice. Hunt Estates make no representation, warranty, or guarantee as to accuracy of any information contained herein. You should consult your advisors for an independent investigation of any properties. All viewings to be conducted through Hunt Estates.