



Hunt Estates

Purpose Built Apartment By The Sea
Grouville, Jersey

PURPOSE BUILT APARTMENT BY THE SEA

A delightful apartment set in a wonderful location by the sea and near to Gorey.

The apartment is clean and fresh and is offered with vacant possession with no upward chain.

It is conveniently placed for the golden sands of The Royal Bay of Grouville, where you can enjoy lazy summer days, walks and sea swimming, it is across the road from Grouville Common where summer fetes are held, it is just a few minutes' walk to Gorey Village with grocery stores, post office, café and fish & chip shop. There is a bus stop near the apartment block with a regular service to town. A short stroll will lead you along the promenade to the imposing Gorey Castle and charming harbour with its restaurants, café's, shops and pub.

Comprising; entrance hall, airing cupboard, sitting room with a door to a balcony with a side view of the sea, separate kitchen with window, two bedrooms, the main bedroom has an en suite bathroom with shower over, and a door to a balcony with a sea view, and a house bathroom.

There are just 12 apartments in the block. There are two external allocated parking spaces.

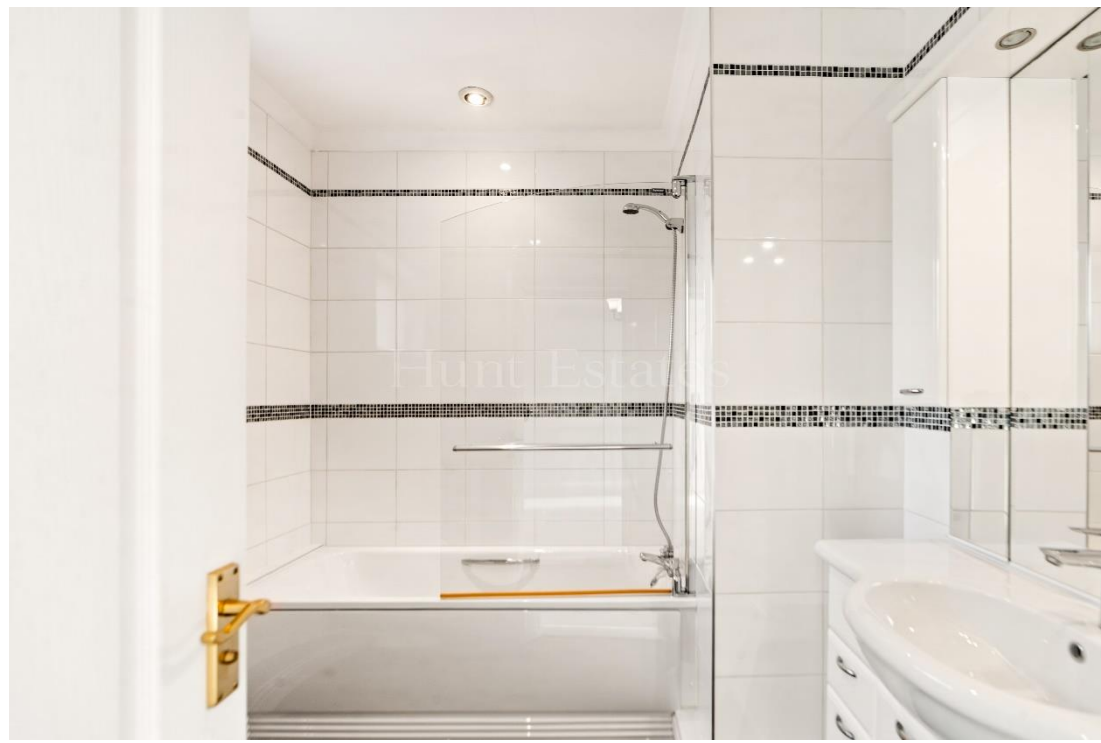
This apartment would suit those looking to scale down or have a lock-up-and-leave property by the sea. The location is wonderful with all amenities on hand.

Keys held for easy viewing.











FIRST FLOOR
778 sq.ft. (72.3 sq.m.) approx.

FEATURES

- Two bedrooms, two bathrooms
- Some sea views
- Balcony access from sitting room and main bedroom
- Separate kitchen
- Approx 780 sq ft
- Excellent location close to the beach
- Good bus service to town

INFORMATION

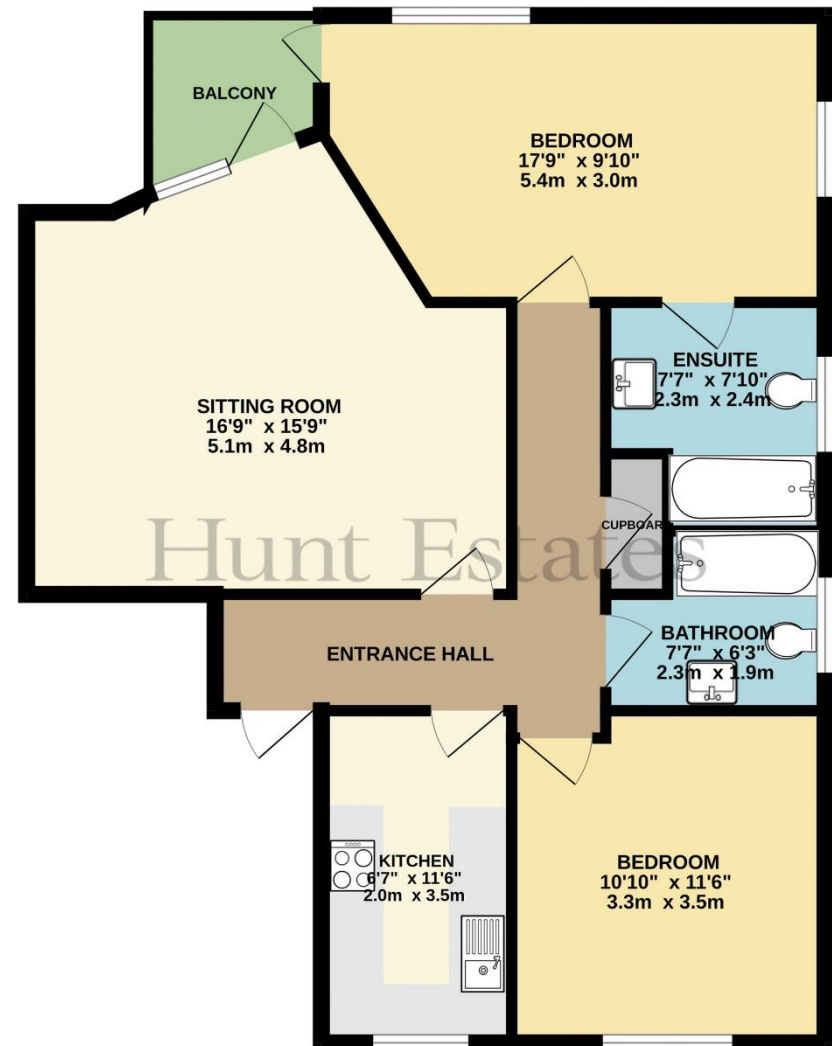
- Mains water and drains
- Gas heating
- Fully double glazed throughout
- No pet restrictions
- Two parking spaces
- Service charges are £846.58 per quarter from January 2025
- Share transfer



Gill Hunt, FNAEA
Director

gill@huntstates.com
T +44 (0)7797 721881
www.huntstates.com
9 New Street, St Helier,
Jersey, JE2 3RA

CHRISTIE'S | Hunt Estates
INTERNATIONAL REAL ESTATE



TOTAL FLOOR AREA : 778 sq.ft. (72.3 sq.m.) approx.

Whilst every attempt has been made to ensure the accuracy of the floorplan contained here, measurements of doors, windows, rooms and any other items are approximate and no responsibility is taken for any error, omission or mis-statement. This plan is for illustrative purposes only and should be used as such by any prospective purchaser. The services, systems and appliances shown have not been tested and no guarantee as to their operability or efficiency can be given.
Made with Metropix ©2024

Hunt Estates

9 New Street, St Helier, Jersey, JE2 3RA, Channel Islands | +44 1534 860650 | www.huntestates.com | enquiries@huntestates.com

Disclaimer: All information provided herein has been obtained from sources believed reliable, but may be subject to errors, omissions, change of price, prior sale, withdrawal without notice. Hunt Estates make no representation, warranty, or guarantee as to accuracy of any information contained herein. You should consult your advisors for an independent investigation of any properties. All viewings to be conducted through Hunt Estates.