



Hunt Estates

Beautifully Presented Three Bedroom Family Home
St. Clement, Jersey

BEAUTIFULLY PRESENTED THREE BEDROOM FAMILY HOME

Renovated in 2019, this exceptional three-bedroom family home offers abundant natural light and space, making it ideal for a growing family.

The ground floor includes an entrance hall with a small office area, a modern, fully fitted kitchen that flows into a cozy playroom or snug. The open-plan sitting room features bi-fold doors leading to a fully enclosed, low-maintenance garden. Also on this level is a shower room, a utility room, a playroom/study/gym, and a double bedroom with direct access to the private garden.

On the first floor, you'll find two additional double bedrooms, one with a large walk-in wardrobe, along with a house bathroom complete with both a bath and a shower.

Externally, the rear garden is fully enclosed and includes a storage shed and a paved area, perfect for outdoor dining during the summer.

This contemporary home is situated in a sought-after location, making it an ideal choice for those seeking a family property that is close to schools and amenities, with no further work required.

Viewings are highly recommended.









Est. 2012

















FEATURES

- Three double bedrooms, plus playroom/study/gym
- Spacious sitting room and separate dining room
- Low maintenance rear garden
- Walk in condition
- Good catchment area
- Close to the beach

INFORMATION

- Mains water and drains
- Oil fired central heating
- Fully double glazed
- Parking for 3 cars
- Parish rates for 2024 were £487.92
- Freehold and Entitled/Licensed



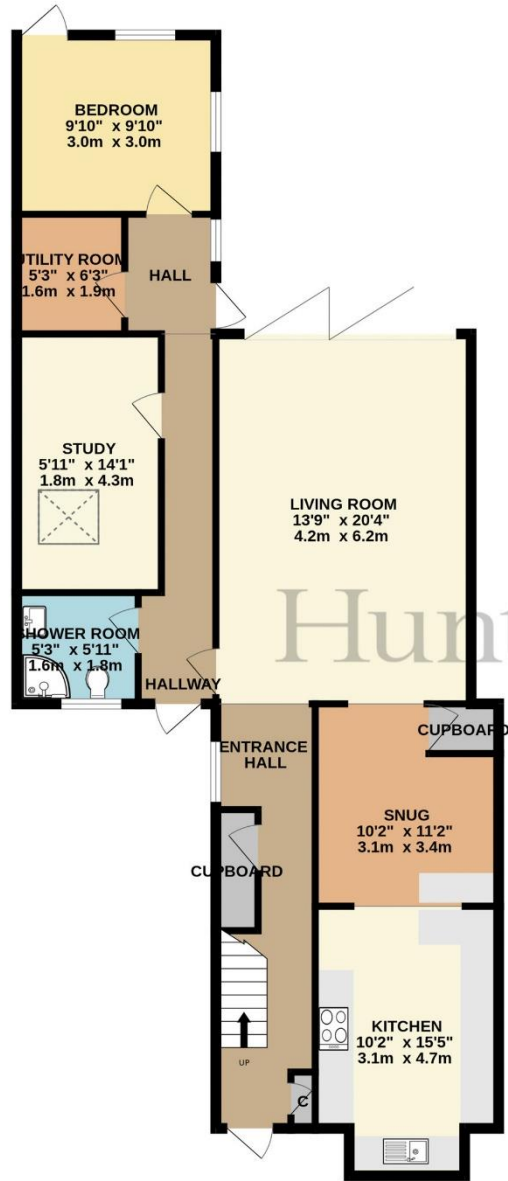
Gill Acton
Property Negotiator

gill.acton@huntstates.com
T +44 (0)7797 961649
www.huntstates.com
9 New Street, St Helier,
Jersey, JE2 3RA

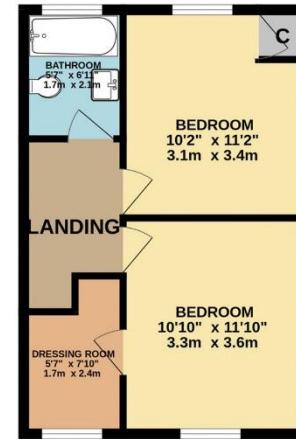
CHRISTIE'S | Hunt Estates
INTERNATIONAL REAL ESTATE



GROUND FLOOR
1062 sq.ft. (98.7 sq.m.) approx.



1ST FLOOR
361 sq.ft. (33.6 sq.m.) approx.



Hunt Estates

TOTAL FLOOR AREA : 1424 sq.ft. (132.3 sq.m.) approx.

Whilst every attempt has been made to ensure the accuracy of the floorplan contained here, measurements of doors, windows, rooms and any other items are approximate and no responsibility is taken for any error, omission or mis-statement. This plan is for illustrative purposes only and should be used as such by any prospective purchaser. The services, systems and appliances shown have not been tested and no guarantee as to their operability or efficiency can be given.

Made with Metropix ©2024

Hunt Estates

9 New Street, St Helier, Jersey, JE2 3RA, Channel Islands | +44 1534 860650 | www.huntestates.com | enquiries@huntestates.com

Disclaimer: All information provided herein has been obtained from sources believed reliable, but may be subject to errors, omissions, change of price, prior sale, withdrawal without notice. Hunt Estates make no representation, warranty, or guarantee as to accuracy of any information contained herein. You should consult your advisors for an independent investigation of any properties. All viewings to be conducted through Hunt Estates.