



Hunt Estates

Spacious Apartment with Panoramic Views over St. Aubin's Bay  
St. Helier, Jersey

## SPACIOUS APARTMENT WITH PANORAMIC VIEWS OVER ST. AUBIN'S BAY

This spacious (1009 sq ft) purpose-built apartment enjoys panoramic sea views that stretch from Elizabeth Castle to St Aubin.

The open plan kitchen/living area has fully glazed sliding doors that open to a full width covered balcony, ideal for alfresco dining whilst enjoying the views.

The first-floor accommodation comprises; large entrance hall with three storage cupboards, open plan living room/kitchen/diner which is fully fitted with appliances, two double bedrooms, one being en-suite and the other having a "Jack and Jill" shower room which also serves as a guest cloakroom.

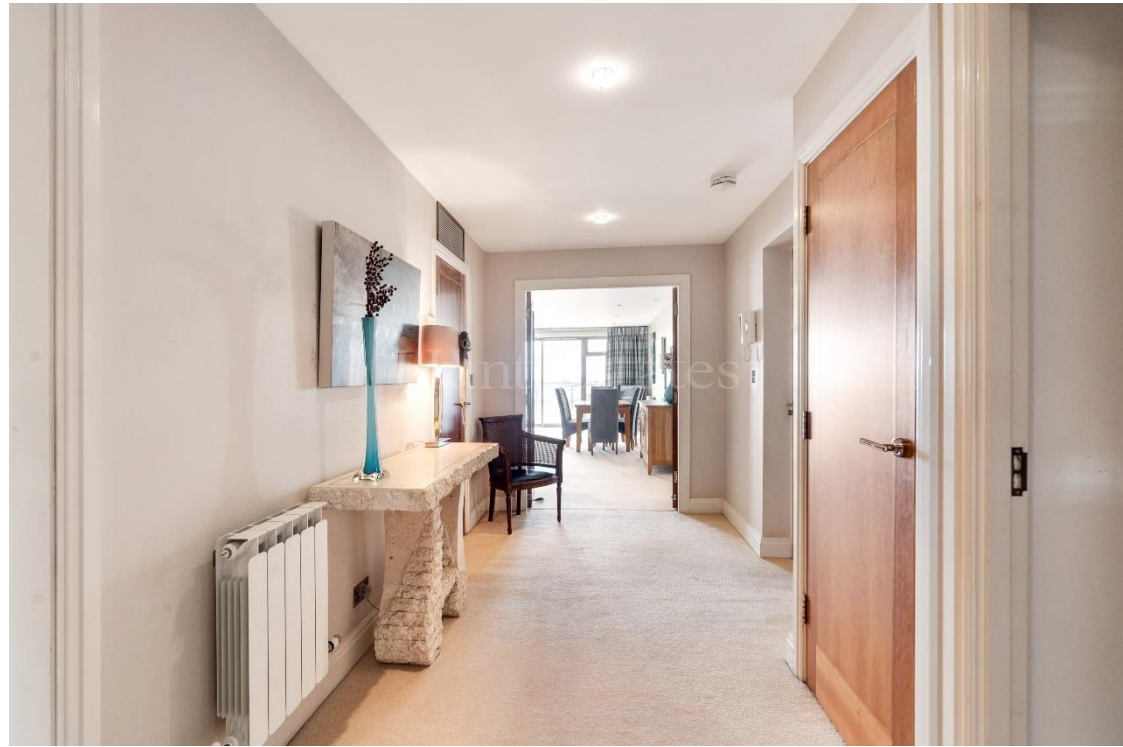
The apartment is available to purchase fully furnished.

The apartment lies within easy walking distance of the Esplanade, waterfront and the town centre. The beach and seafront cycle path leading to St Aubin are just minutes away.

There is a lift service, secure gated communal parking for 2 cars (tandem) in addition to external communal visitor parking, and a storeroom.



















## FEATURES

- Spacious (1009 sq ft) accommodation
- Stunning panoramic sea-views
- Contemporary style apartment
- Ensuite primary bedroom
- Second bedroom with “Jack & Jill” shower room
- Open plan living room/ kitchen/diner
- 3 x storage cupboards

## INFORMATION

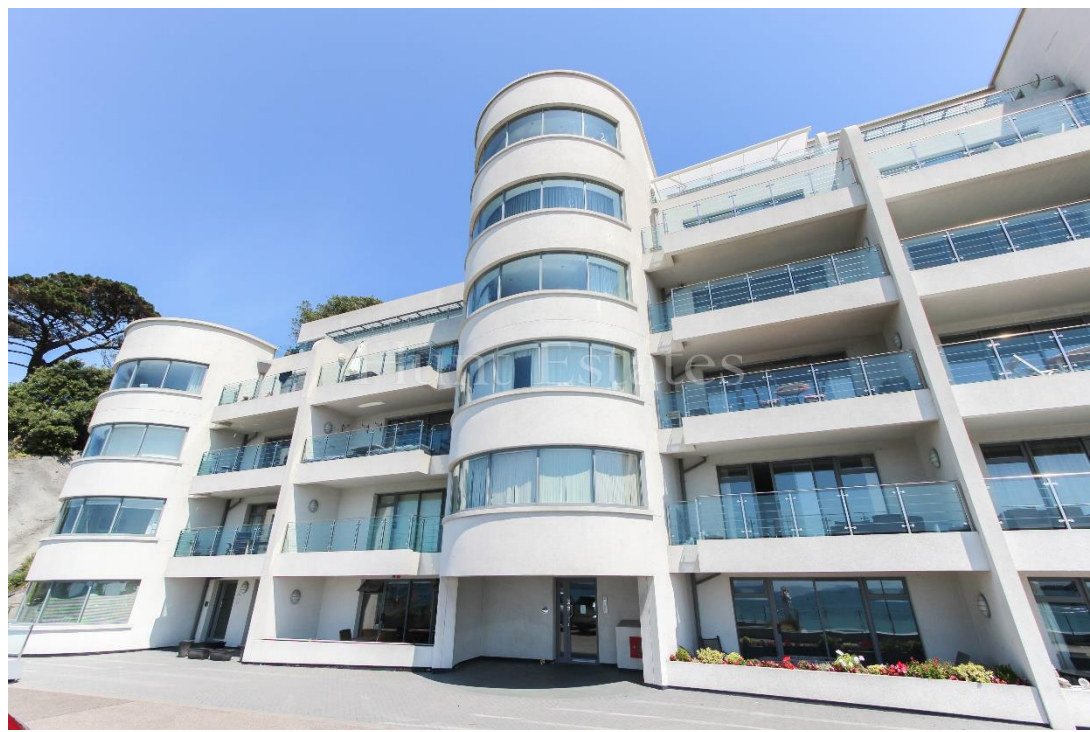
- Mains water and drains
- Electric heating
- Double glazed
- Available fully furnished
- 2 secure gated parking spaces (tandem)
- Lock up store
- Visitor parking available
- Regret no pets
- Quarterly service charge of £814.56
- Share transfer



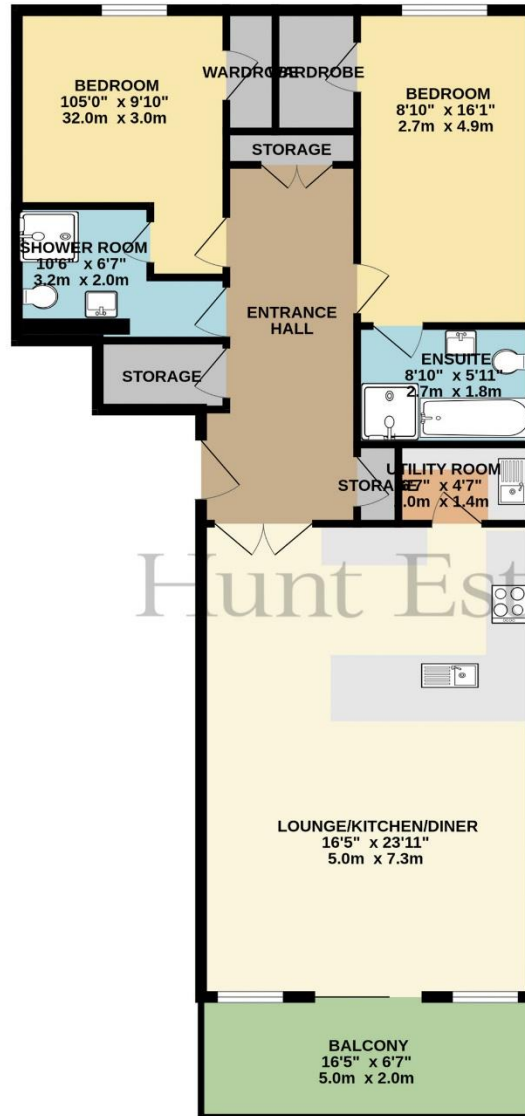
David Voak MNAEA  
Property Negotiator

david@huntstates.com  
T +44 (0)7797 725621  
www.huntstates.com  
9 New Street, St Helier,  
Jersey, JE2 3RA

CHRISTIE'S | Hunt Estates  
INTERNATIONAL REAL ESTATE



FIRST FLOOR  
1009 sq.ft. (93.8 sq.m.) approx.



Hunt Estates

TOTAL FLOOR AREA : 1009 sq.ft. (93.8 sq.m.) approx.

Whilst every attempt has been made to ensure the accuracy of the floorplan contained here, measurements of doors, windows, rooms and any other items are approximate and no responsibility is taken for any error, omission or mis-statement. This plan is for illustrative purposes only and should be used as such by any prospective purchaser. The services, systems and appliances shown have not been tested and no guarantee as to their operability or efficiency can be given.  
Made with Metropix ©2024

# Hunt Estates

9 New Street, St Helier, Jersey, JE2 3RA, Channel Islands | +44 1534 860650 | [www.huntestates.com](http://www.huntestates.com) | [enquiries@huntestates.com](mailto:enquiries@huntestates.com)

Disclaimer: All information provided herein has been obtained from sources believed reliable, but may be subject to errors, omissions, change of price, prior sale, withdrawal without notice. Hunt Estates make no representation, warranty, or guarantee as to accuracy of any information contained herein. You should consult your advisors for an independent investigation of any properties. All viewings to be conducted through Hunt Estates.