



**CHRISTIE'S** | **Hunt Estates**  
INTERNATIONAL REAL ESTATE

A Charming Blend of Tradition and Modern Comfort  
St. Peter, Jersey

## A CHARMING BLEND OF TRADITION AND MODERN COMFORT

Vallambrosa is a beautifully restored four-bedroom, two bathroom granite home completed by the reputable developers Antler Homes back in 2004, offering the perfect balance of traditional charm and modern finishes.

Located down a private drive away from main roads in a rural surrounding, this good size home enjoys a tranquil lifestyle amongst similar small hamlet of homes, while still being close to local amenities.

The property is arranged over three floors and offers versatile living depending on how you wish to use all the rooms. The ground floor features the main bedroom with an ensuite, alongside a second double bedroom. Upstairs, the first/entrance floor boasts a large, inviting living room with a stunning granite fireplace and wood-burning stove, a third double bedroom, a modern house bathroom, and an attractive kitchen with vaulted ceilings and a dining area leading out to the upper patio courtyard.

The top floor offers a flexible landing area, currently used as a home office, leading to the fourth double bedroom.

Outside, the front and rear enclosed gardens provide lovely patio and lawn areas.

Additional features include a large storage shed and parking for three cars.

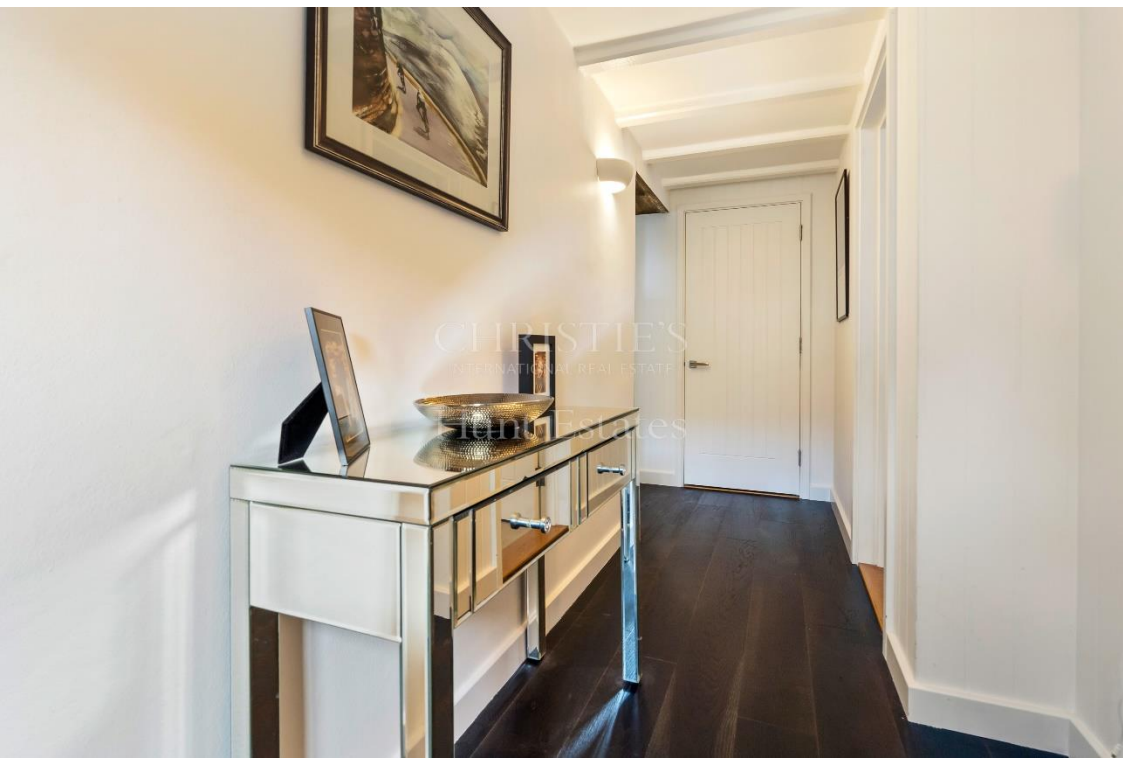
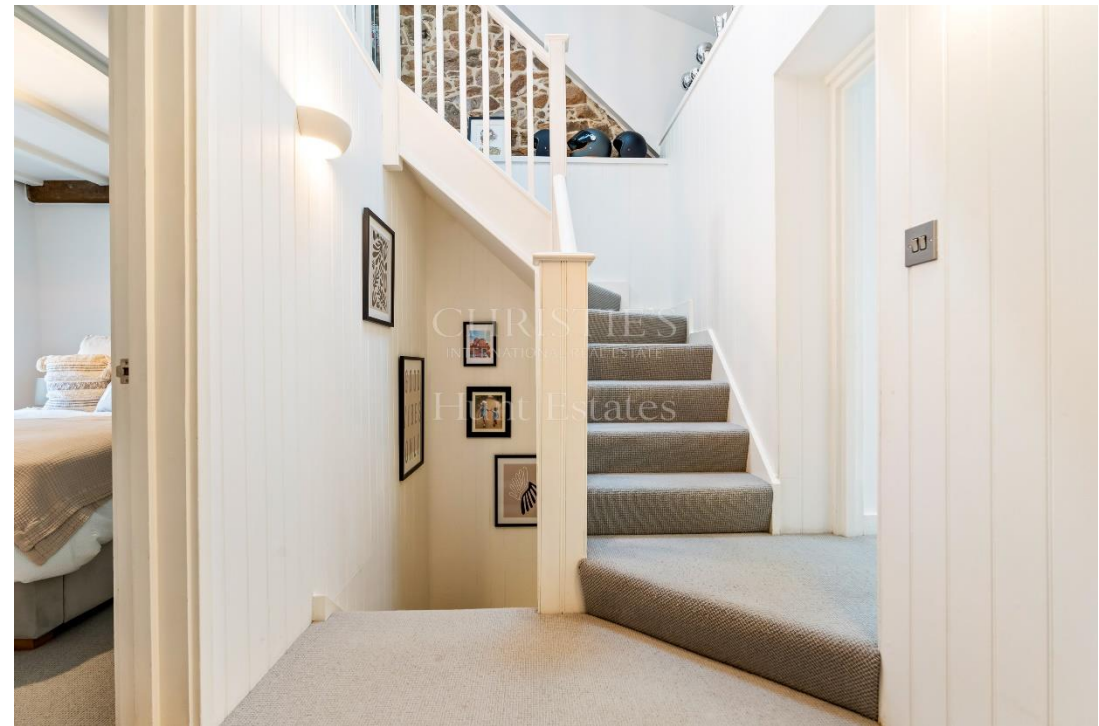


















CHRISTIE'S  
INTERNATIONAL REAL ESTATE  
Luton Estates









## FEATURES

- 4 bedrooms, 2 bathrooms
- Stunning historic living room with fireplace
- Vaulted kitchen/diner
- Three reception rooms
- Quiet location but near St Peter's village
- Patio rear courtyard & front south facing garden

## INFORMATION

- Mains water and drains
- Oil fired central heating
- Double glazed
- Grade 4 listing
- Large storage shed and parking for 3 cars
- Communal maintenance charge of £50pcm
- Parish rates for 2024 were £658
- Freehold and Entitled/Licensed



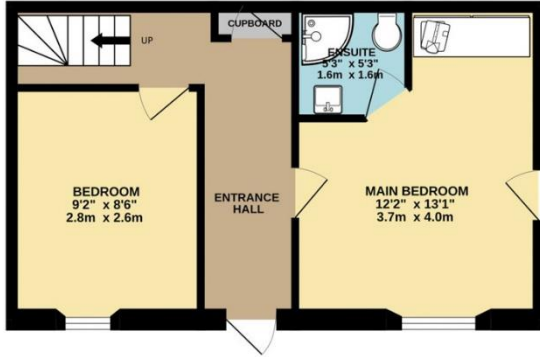
Danny Bosio  
Property Negotiator

danny@huntstates.com  
T +44 (0)7797 712711  
www.huntstates.com  
9 New Street, St Helier,  
Jersey, JE2 3RA

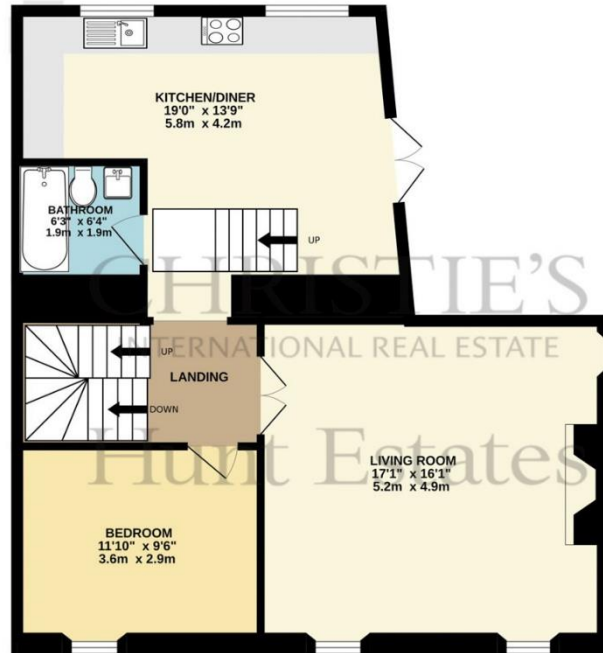
CHRISTIE'S | Hunt Estates  
INTERNATIONAL REAL ESTATE



GROUND FLOOR  
402 sq.ft. (37.3 sq.m.) approx.



1ST FLOOR  
710 sq.ft. (66.0 sq.m.) approx.



2ND FLOOR  
418 sq.ft. (38.8 sq.m.) approx.



TOTAL FLOOR AREA : 1530 sq.ft. (142.1 sq.m.) approx.

Whilst every attempt has been made to ensure the accuracy of the floorplan contained here, measurements of doors, windows, rooms and any other items are approximate and no responsibility is taken for any error, omission or mis-statement. This plan is for illustrative purposes only and should be used as such by any prospective purchaser. The services, systems and appliances shown have not been tested and no guarantee as to their operability or efficiency can be given.  
Made with Metropix ©2024

As the selected exclusive affiliate of Christie's International Real Estate in Jersey, Channel Islands, Hunt Estates combines local expertise with global reach via Christie's affiliation to the most famous real estate companies in the world.

An invitation-only affiliate network, Christie's International Real Estate selected Hunt Estates in 2020 to represent the famous Christie's brand in the sphere of luxury real estate in Jersey.

# CHRISTIE'S | Hunt Estates

INTERNATIONAL REAL ESTATE

9 New Street, St Helier, Jersey, JE2 3RA, Channel Islands | +44 1534 860650 | [www.huntestates.com](http://www.huntestates.com) | [enquiries@huntestates.com](mailto:enquiries@huntestates.com)

Disclaimer: All information provided herein has been obtained from sources believed reliable, but may be subject to errors, omissions, change of price, prior sale, withdrawal without notice. Hunt Estates make no representation, warranty, or guarantee as to accuracy of any information contained herein. You should consult your advisors for an independent investigation of any properties. All viewings to be conducted through Hunt Estates.