



Hunt Estates

Beautiful Four Bedroom Converted Granite Barn
St. Helier, Jersey

BEAUTIFUL FOUR BEDROOM CONVERTED GRANITE BARN

Nestled in a tranquil rural setting in St Helier, this beautifully converted 4 bedroom, 3 bathroom barn is accessed via a long drive surrounded by fields.

The ground floor features a spacious eat-in kitchen, fitted with a Rangemaster, and a glass extension that fills the room with natural light, offering direct access to the garden. A formal dining room adjoins the kitchen, creating a perfect space for hosting gatherings. This level also houses the primary bedroom, complete with fitted wardrobes and an en-suite, along with a second bedroom that also benefits from its own en-suite.

On the first floor, an impressive double-height sitting room steals the show, adorned with original beams and Velux windows that bring an airy, open feel to the space. Two additional bedrooms on this level share a convenient Jack-and-Jill bathroom.

The exterior is just as appealing, featuring an enclosed west-facing garden, ideal for children and pets. Two spacious patio areas, a decking area, and ample parking for six cars make this home perfect for both relaxation and entertaining in a peaceful, idyllic setting.









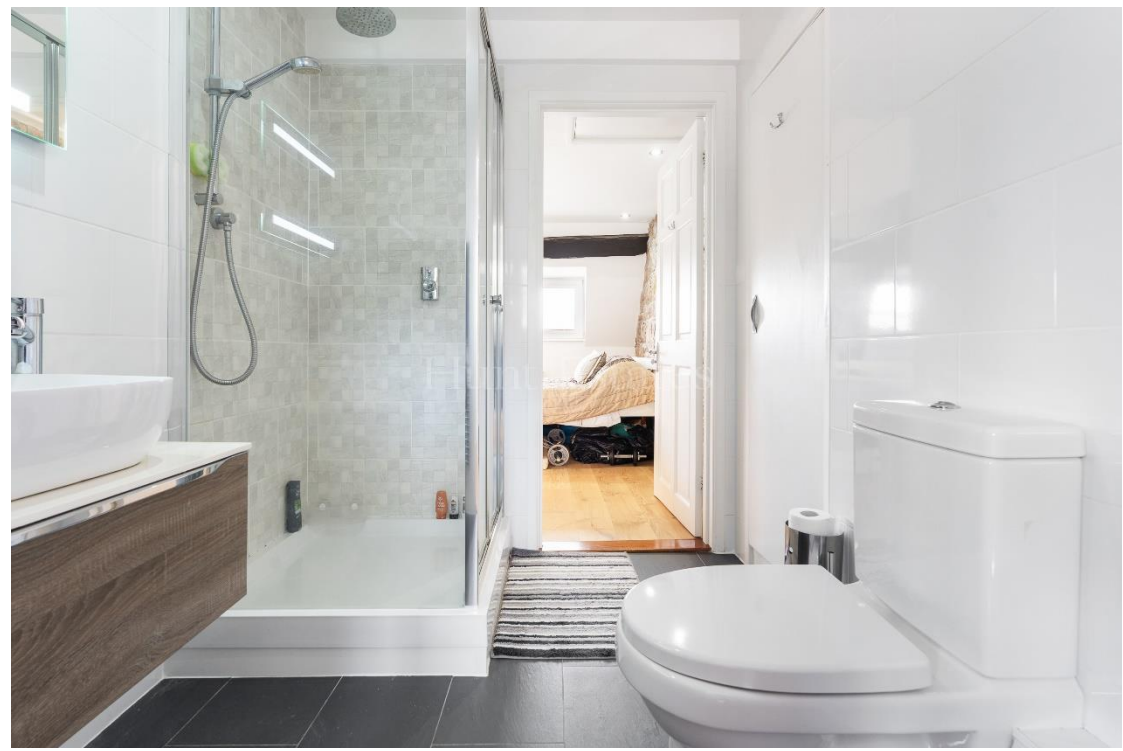
















FEATURES

- Converted granite barn
- 4 bedrooms and 3 bathrooms
- Eat-in kitchen
- Formal dining room
- Double height sitting room with original beams and Velux window
- Enclosed southwest garden with decking, patio and grass

INFORMATION

- Main water and drains
- Underfloor oil-fired central heating
- Pets welcome
- Option to have fully furnished
- Parking for 6 cars
- Occupier rates for 2024 were £333.50
- Available from 1 November to Entitled/Licensed residents
- Please note that the equivalent of one month's rent is required for the deposit



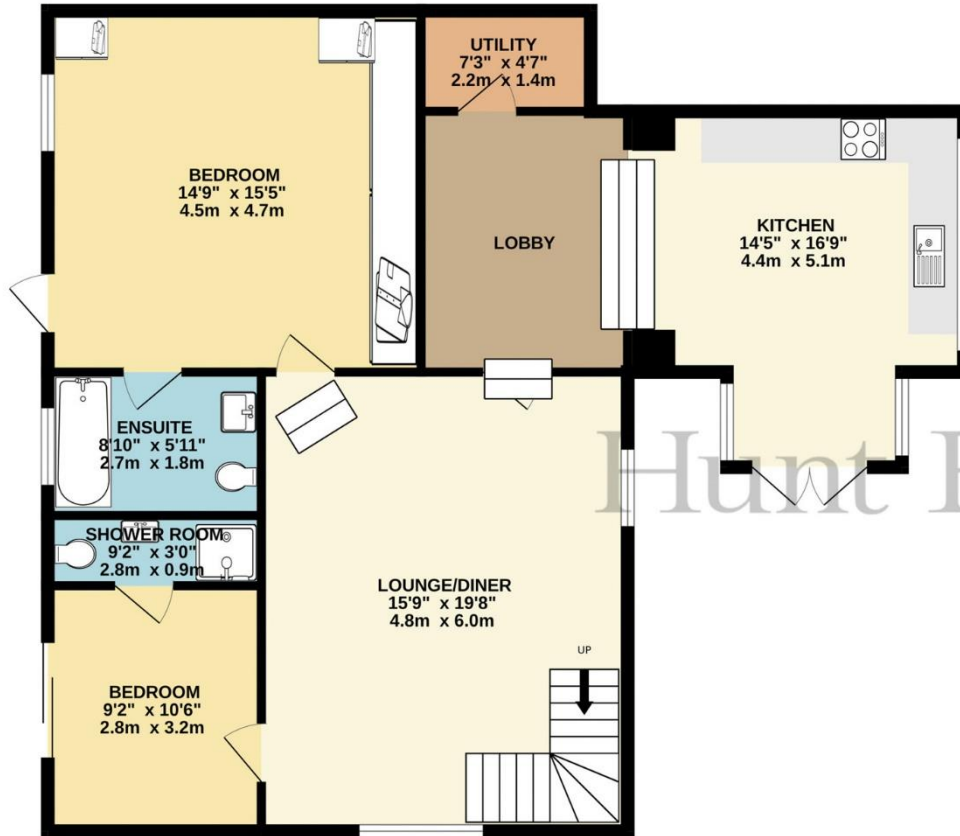
Sarah Gallichan
Property Negotiator

sarah@huntstates.com
T +44 (0)7700 713574
www.huntstates.com
9 New Street, St Helier,
Jersey, JE2 3RA

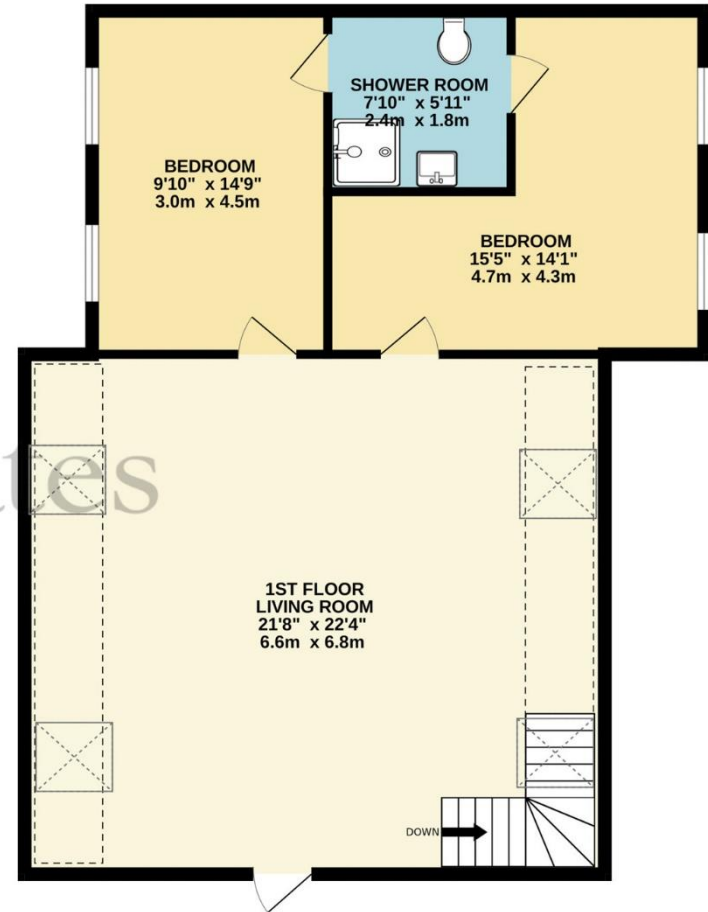
CHRISTIE'S | Hunt Estates
INTERNATIONAL REAL ESTATE



GROUND FLOOR
1058 sq.ft. (98.3 sq.m.) approx.



1ST FLOOR
944 sq.ft. (87.7 sq.m.) approx.



TOTAL FLOOR AREA : 2002 sq.ft. (186.0 sq.m.) approx.

Whilst every attempt has been made to ensure the accuracy of the floorplan contained here, measurements of doors, windows, rooms and any other items are approximate and no responsibility is taken for any error, omission or mis-statement. This plan is for illustrative purposes only and should be used as such by any prospective purchaser. The services, systems and appliances shown have not been tested and no guarantee as to their operability or efficiency can be given.

Made with Metropix ©2024

Hunt Estates

9 New Street, St Helier, Jersey, JE2 3RA, Channel Islands | +44 1534 860650 | www.huntestates.com | enquiries@huntestates.com

Disclaimer: All information provided herein has been obtained from sources believed reliable, but may be subject to errors, omissions, change of price, prior sale, withdrawal without notice. Hunt Estates make no representation, warranty, or guarantee as to accuracy of any information contained herein. You should consult your advisors for an independent investigation of any properties. All viewings to be conducted through Hunt Estates.