



Hunt Estates

Exceptional High Spec Two Bedroom Apartment At Portelet  
St. Brelade, Jersey

## EXCEPTIONAL HIGH SPEC TWO BEDROOM APARTMENT AT PORTELET

Located within the exclusive gated community of Portelet Bay, this contemporary two-bedroom apartment has been recently refurbished to a high specification.

The impressive large open-plan living area including a fully fitted kitchen with breakfast bar, designated dining area complemented by floor-to-ceiling windows and sliding doors opening onto a sun terrace. Perfect for alfresco dining, the terrace offers partial sea views and enjoys all-day sunshine. Both double bedrooms boast custom wardrobes and stylish ensuites, while additional amenities include a utility/laundry room, cloakroom, and storage.

Residents enjoy access to well-maintained communal areas, a private tennis court, and direct beach access to the popular Portelet Bay beach. You are also walking distance to the Portelet pub & eatery and bus stop.

The property includes two designated parking spaces and ample visitor parking.

Viewing is highly recommended. No onward chain.

























Hunt Estates



## FEATURES

- Two bedroom, two bathroom apartment
- Modern minimalist design
- South facing terrace
- Exclusive gated development at Portelet
- Direct access to beach
- Tennis court
- Recently renovated throughout

## INFORMATION

- Mains water and drains
- Electric under floor heating plus heating/AC system in living room
- Full double glazing
- No restriction on pets
- Service charge £328 pcm
- Two parking spaces plus visitor parking
- Flying Freehold and Entitled/Licensed



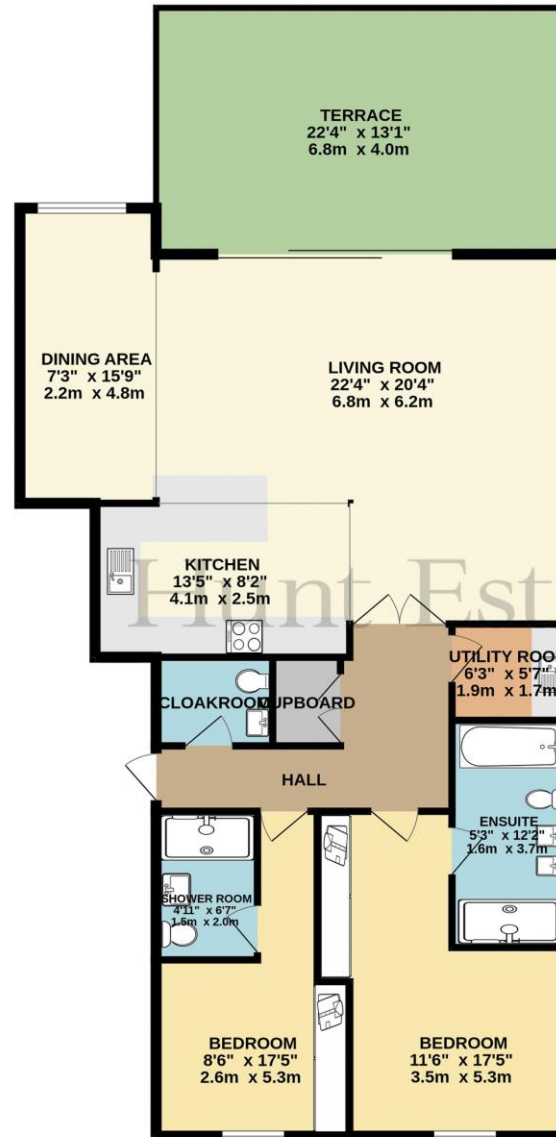
Danny Bosio  
Property Negotiator

danny@huntstates.com  
T +44 (0)7797 712711  
www.huntstates.com  
9 New Street, St Helier,  
Jersey, JE2 3RA

CHRISTIE'S | Hunt Estates  
INTERNATIONAL REAL ESTATE



GROUND FLOOR  
1174 sq.ft. (109.1 sq.m.) approx.



TOTAL FLOOR AREA: 1174 sq.ft. (109.1 sq.m.) approx.

Whilst every attempt has been made to ensure the accuracy of the floorplan contained here, measurements of doors, windows, rooms and any other items are approximate and no responsibility is taken for any error, omission or mis-statement. This plan is for illustrative purposes only and should be used as such by any prospective purchaser. The services, systems and appliances shown have not been tested and no guarantee as to their operability or efficiency can be given.  
Made with Metropix ©2024

# Hunt Estates

9 New Street, St Helier, Jersey, JE2 3RA, Channel Islands | +44 1534 860650 | [www.huntestates.com](http://www.huntestates.com) | [enquiries@huntestates.com](mailto:enquiries@huntestates.com)

Disclaimer: All information provided herein has been obtained from sources believed reliable, but may be subject to errors, omissions, change of price, prior sale, withdrawal without notice. Hunt Estates make no representation, warranty, or guarantee as to accuracy of any information contained herein. You should consult your advisors for an independent investigation of any properties. All viewings to be conducted through Hunt Estates.