



Hunt Estates

Three Bedroom Home with Scenic Country Views  
St. Helier, Jersey

## THREE BEDROOM HOME WITH SCENIC COUNTRY VIEWS

\*Perfect for First-Time Buyers\*

Nestled on the outskirts of town, this 3-bedroom home on a small selected area of Oak Tree Gardens offers good size living accommodation ideal for first-time buyers or moving out of a share transfer apartment.

The property features a good-sized living room, an eat-in kitchen both with access to the rear garden. The garden is designed for low maintenance, providing a perfect space for relaxation or entertaining/alfresco dining without the hassle of upkeep.

Additional amenities include a garage with parking for one car, as well as access to communal parking spaces for added convenience. Only a short drive to town amenities and close to Waitrose.

Don't miss this opportunity to make this your first home!







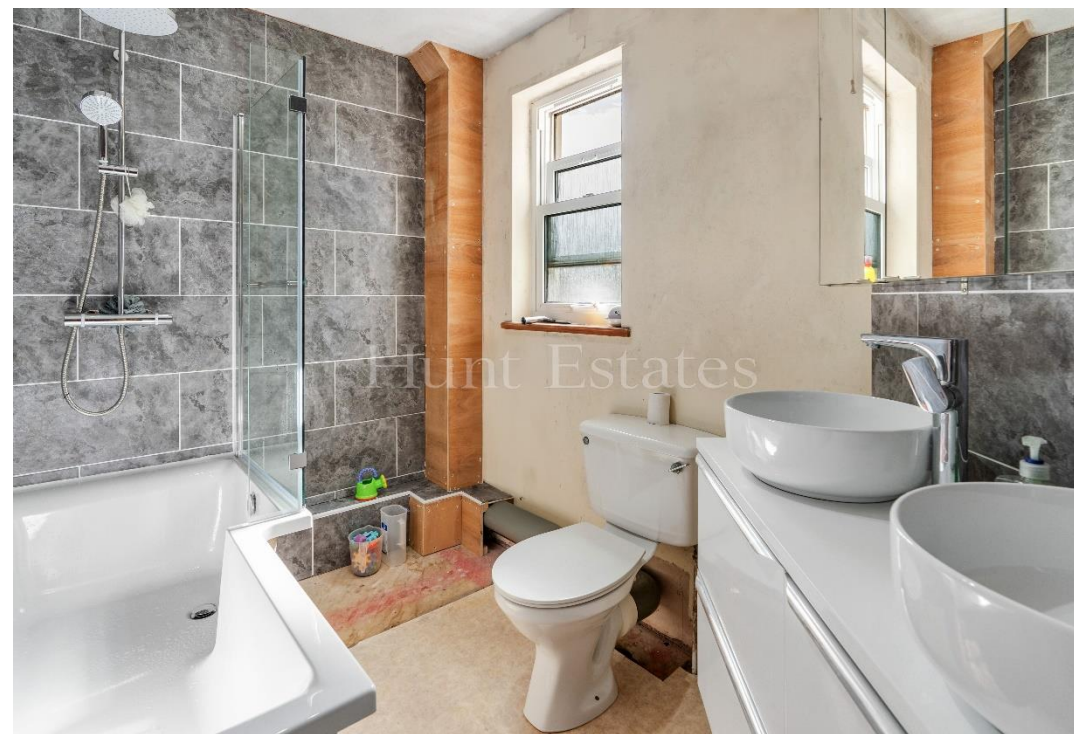












## FEATURES

- 3 bedrooms, 1 bathroom
- Eat in Kitchen
- Enclosed low maintenance garden
- Outskirts of Town
- Scenic country views
- On small cul du sac of similar homes

## INFORMATION

- Mains water and drains
- Electric heating
- Double glazed
- Garage and parking
- Parish rates for 2024 were £486.90
- Communal fees for upkeep of gardens £170 per annum
- Freehold and Entitled/Licensed



Danny Bosio  
Property Negotiator

danny@huntstates.com  
T +44 (0)7797 712711  
www.huntstates.com  
9 New Street, St Helier,  
Jersey, JE2 3RA

CHRISTIE'S | Hunt Estates  
INTERNATIONAL REAL ESTATE

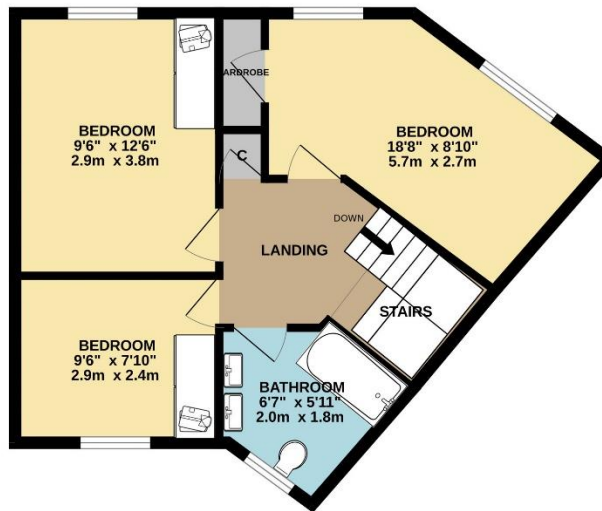


GROUND FLOOR  
572 sq.ft. (53.1 sq.m.) approx.



1ST FLOOR  
470 sq.ft. (43.7 sq.m.) approx.

Hunt Estates



TOTAL FLOOR AREA: 1042 sq.ft. (96.8 sq.m.) approx.

Whilst every attempt has been made to ensure the accuracy of the floorplan contained here, measurements of doors, windows, rooms and any other items are approximate and no responsibility is taken for any error, omission or mis-statement. This plan is for illustrative purposes only and should be used as such by any prospective purchaser. The services, systems and appliances shown have not been tested and no guarantee as to their operability or efficiency can be given.  
Made with Metropix ©2024

# Hunt Estates

9 New Street, St Helier, Jersey, JE2 3RA, Channel Islands | +44 1534 860650 | [www.huntestates.com](http://www.huntestates.com) | [enquiries@huntestates.com](mailto:enquiries@huntestates.com)

Disclaimer: All information provided herein has been obtained from sources believed reliable, but may be subject to errors, omissions, change of price, prior sale, withdrawal without notice. Hunt Estates make no representation, warranty, or guarantee as to accuracy of any information contained herein. You should consult your advisors for an independent investigation of any properties. All viewings to be conducted through Hunt Estates.