



Hunt Estates

Period Four Bedroom Home in Gorey Village  
Grouville, Jersey

## PERIOD FOUR BEDROOM HOME IN GOREY VILLAGE

Set in the heart of Gorey Village, originally dating back to the mid-19th Century, this period 4-bedroom, 2 bathroom property offers approx. 1,800 of living accommodation.

Including large extended reception rooms, updated kitchen and bathrooms.

There is an enclosed rear courtyard with access to the double garaging, utility store and driveway parking.

The property's prime location places all of Gorey Village's amenities, shops, beaches, and the iconic Gorey Harbour just a short stroll away.

No onward chain.



















## FEATURES

- 4 bedrooms, 2 bathrooms
- Period Property
- Located in the heart of Gorey Village
- Rear courtyard garden
- No onward chain

## INFORMATION

- Mains water and drains
- Gas heating
- Grade 4 listing (exterior only)
- Bathrooms & kitchen updated recently
- Double garage & parking for 2 cars
- Freehold and Entitled/Licensed



Danny Bosio  
Property Negotiator

danny@huntestates.com  
T +44 (0)7797 712711  
www.huntestates.com  
9 New Street, St Helier,  
Jersey, JE2 3RA

CHRISTIE'S | Hunt Estates  
INTERNATIONAL REAL ESTATE

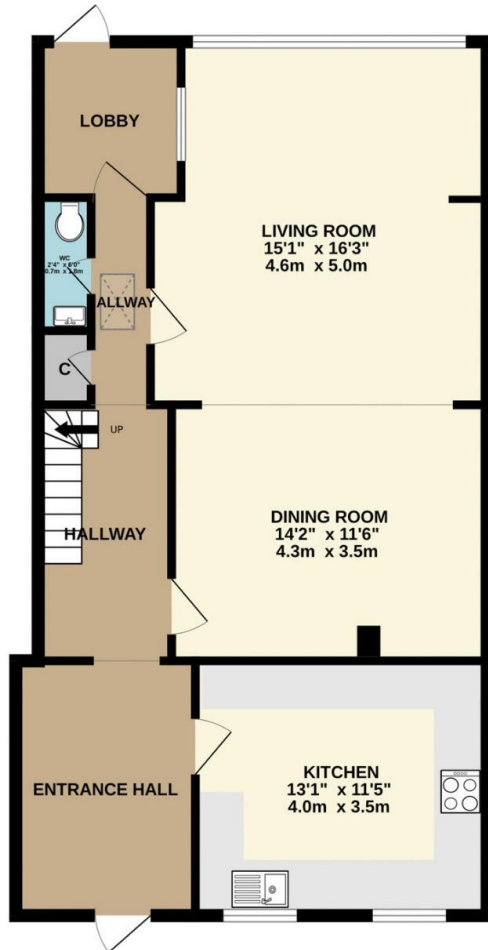
Sarah Gallichan  
Property Negotiator

sarah@huntestates.com  
T +44 (0)7700 713574  
www.huntestates.com  
9 New Street, St Helier,  
Jersey, JE2 3RA

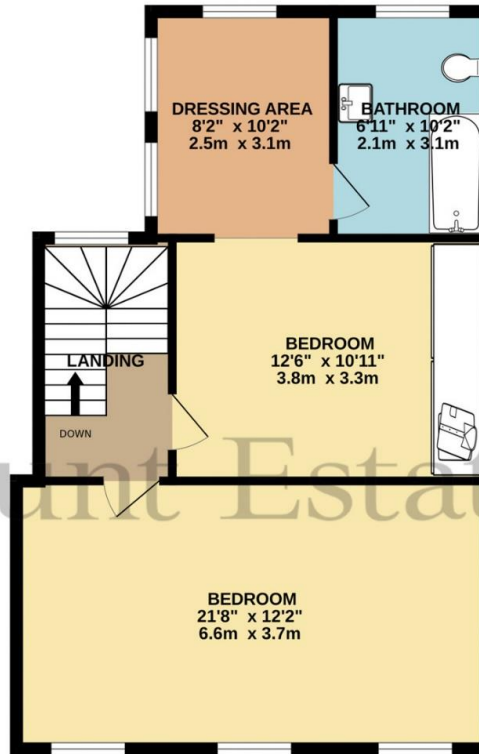
CHRISTIE'S | Hunt Estates  
INTERNATIONAL REAL ESTATE



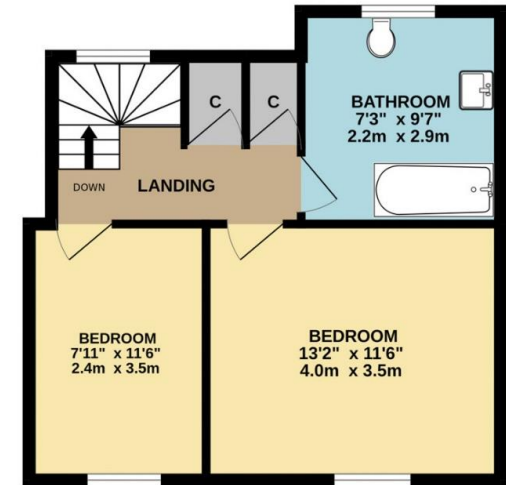
GROUND FLOOR  
799 sq.ft. (74.2 sq.m.) approx.



1ST FLOOR  
627 sq.ft. (58.2 sq.m.) approx.



2ND FLOOR  
412 sq.ft. (38.3 sq.m.) approx.



TOTAL FLOOR AREA : 1837 sq.ft. (170.7 sq.m.) approx.

Whilst every attempt has been made to ensure the accuracy of the floorplan contained here, measurements of doors, windows, rooms and any other items are approximate and no responsibility is taken for any error, omission or mis-statement. This plan is for illustrative purposes only and should be used as such by any prospective purchaser. The services, systems and appliances shown have not been tested and no guarantee as to their operability or efficiency can be given.  
Made with Metropix ©2024

# Hunt Estates

9 New Street, St Helier, Jersey, JE2 3RA, Channel Islands | +44 1534 860650 | [www.huntestates.com](http://www.huntestates.com) | [enquiries@huntestates.com](mailto:enquiries@huntestates.com)

Disclaimer: All information provided herein has been obtained from sources believed reliable, but may be subject to errors, omissions, change of price, prior sale, withdrawal without notice. Hunt Estates make no representation, warranty, or guarantee as to accuracy of any information contained herein. You should consult your advisors for an independent investigation of any properties. All viewings to be conducted through Hunt Estates.