



Hunt Estates

Luxurious Three Bedroom Duplex Apartment
St Helier, Jersey



LUXURIOUS THREE BEDROOM DUPLEX APARTMENT

A luxurious, contemporary three-bedroom duplex apartment in the prestigious College Gardens development, offering approximately 1,000 square feet of living space.

Built in 2018, the apartment features an open-plan living area with fully fitted modern kitchen, three double bedrooms, one of which is en-suite, and a house bathroom.

With high ceilings and abundant natural light, this apartment exudes elegance. Set within beautifully maintained grounds and one of only 10 duplex apartments in the complex, the property is tastefully decorated and in walk-in condition.

Located on the edge of town in a peaceful setting, yet just a short walk from town, and close to the many bars and restaurants that St. Helier has to offer and also on a good bus route.

With 2 parking spaces, plus visitor spaces, use of the beautiful gardens and a gym on site for residents only, this apartment has everything to offer.















FEATURES

- Built only 5 years ago
- High ceilings
- Walk in condition
- Prestigious development
- 3 double bedrooms
- On site gym and communal gardens

INFORMATION

- Mains drains and water
- Electric heating
- Fully double glazed
- 2 parking spaces plus visitor spaces
- 1 parking space rents for £175 per month
- Service charge £289 per month to include water rates, parish rates, buildings insurance and sinking fund
- Flying Freehold and Entitled/Licensed



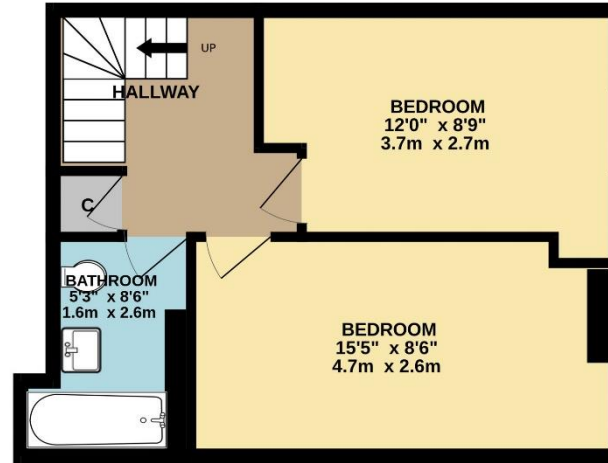
Gill Acton
Property Negotiator

gill.acton@huntestates.com
T +44 (0)7797 961649
www.huntestates.com
9 New Street, St Helier,
Jersey, JE2 3RA

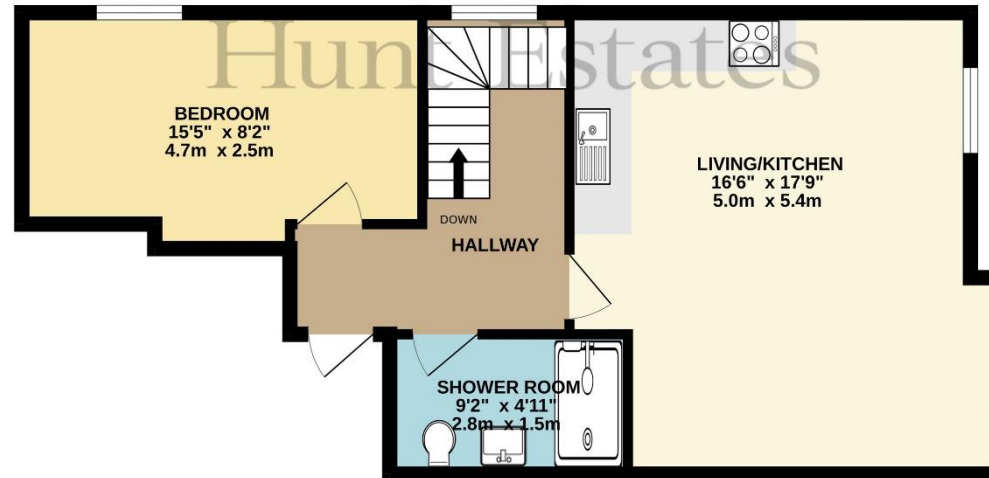
CHRISTIE'S | Hunt Estates
INTERNATIONAL REAL ESTATE



LOWER LEVEL
371 sq.ft. (34.5 sq.m.) approx.



ENTRANCE LEVEL
546 sq.ft. (50.7 sq.m.) approx.



TOTAL FLOOR AREA : 917 sq.ft. (85.2 sq.m.) approx.

Whilst every attempt has been made to ensure the accuracy of the floorplan contained here, measurements of doors, windows, rooms and any other items are approximate and no responsibility is taken for any error, omission or mis-statement. This plan is for illustrative purposes only and should be used as such by any prospective purchaser. The services, systems and appliances shown have not been tested and no guarantee as to their operability or efficiency can be given.
Made with Metropix ©2024

Hunt Estates

9 New Street, St Helier, Jersey, JE2 3RA, Channel Islands | +44 1534 860650 | www.huntestates.com | enquiries@huntestates.com

Disclaimer: All information provided herein has been obtained from sources believed reliable, but may be subject to errors, omissions, change of price, prior sale, withdrawal without notice. Hunt Estates make no representation, warranty, or guarantee as to accuracy of any information contained herein. You should consult your advisors for an independent investigation of any properties. All viewings to be conducted through Hunt Estates.