



Hunt Estates

Beautifully Presented Two Bedroom Apartment with Parking  
St. Helier, Jersey



## BEAUTIFULLY PRESENTED TWO BEDROOM APARTMENT WITH PARKING

A beautifully presented two-bedroom, two-bathroom, first floor apartment located on the outskirts of St. Helier, only a short walk into town for those that work in St Helier centre. The apartment is bright and light throughout with large windows that allow plenty of light in.

Internally the apartment comprises; entrance hall with two storage cupboards, open plan sitting/dining room that comfortably fits a 6-seater table and a separate fully fitted kitchen with a serving hatch into the dining room. There are two double bedrooms, the main bedroom with built-in wardrobes and drawers and an en-suite shower room and there is a house bathroom.

Externally, the apartment benefits from an undercover parking space and a private external storeroom. In addition, there is a communal suntrap terrace, communal clothes drying area and a communal bin store.

Viewings of this wonderful apartment are highly recommended.





















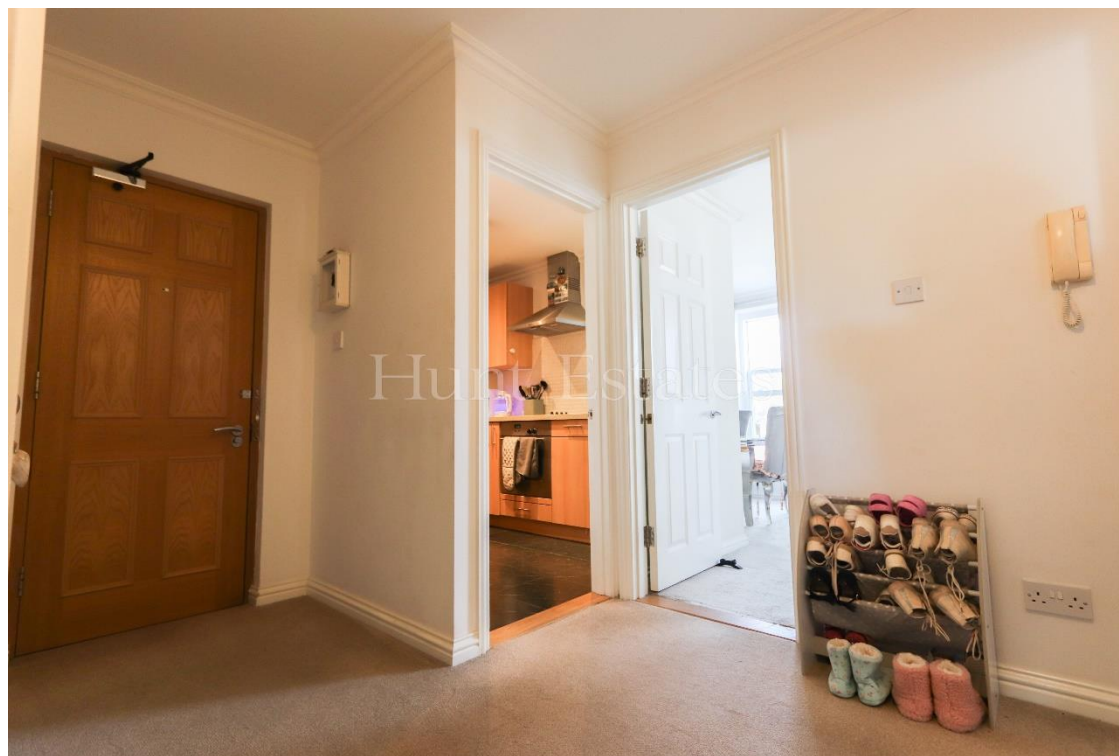


















## FEATURES

- First floor apartment
- Two bedrooms, two bathrooms
- Open plan sitting / dining room
- Light and bright throughout
- Separate kitchen with serving hatch
- Private external storeroom
- Communal suntrap terrace, clothes drying area and bin store

## INFORMATION

- Mains water and drains
- Electric heating
- Double glazed
- Undercover parking for 1 car
- Purpose built in 2003
- Lift access
- Monthly service charge of £186.98 including water
- Parish rates for 2024 were £357.52
- Flying Freehold and Entitled/Licensed



Gill Hunt, FNAEA  
Director

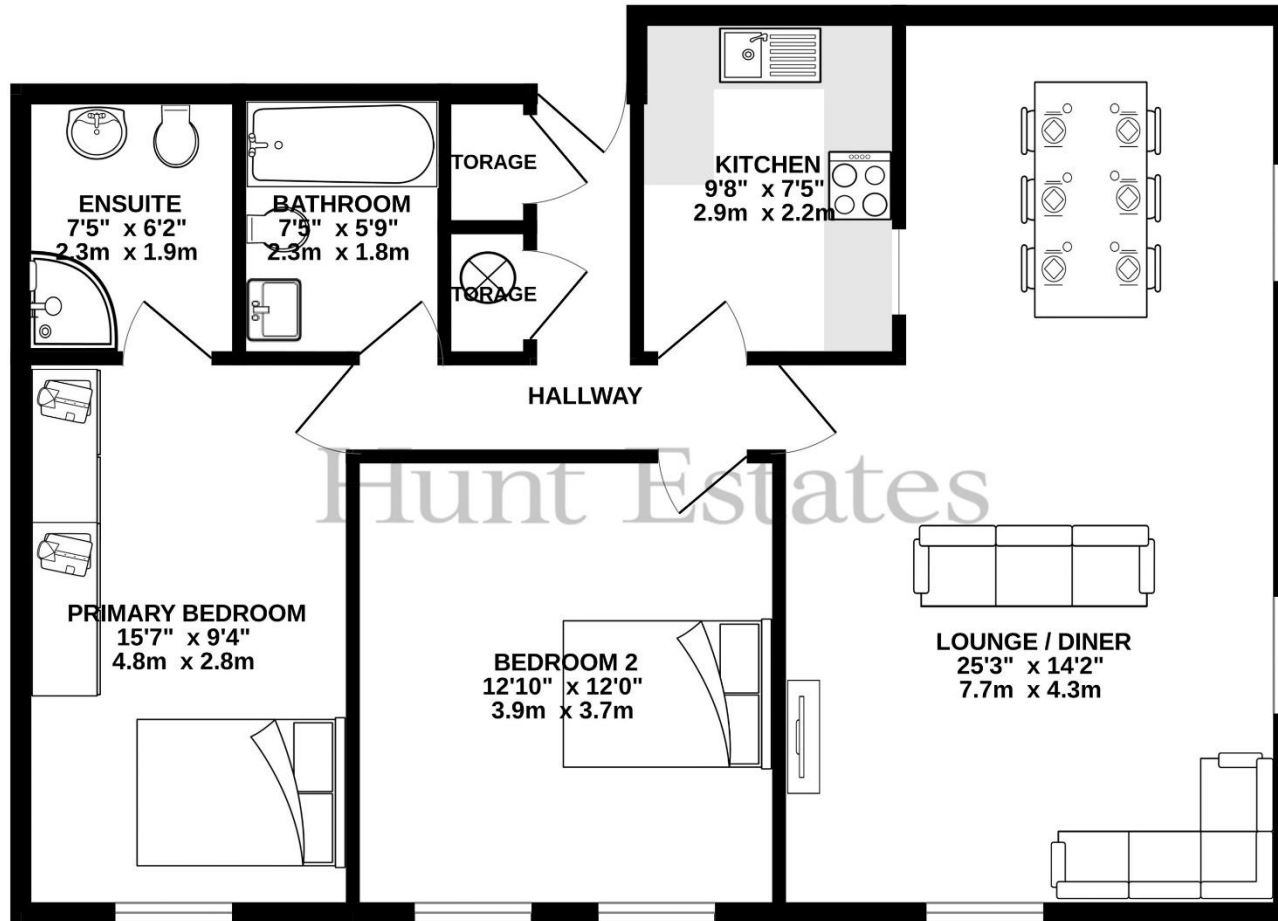
[gill@huntstates.com](mailto:gill@huntstates.com)  
T +44 (0)7797 721881  
[www.huntstates.com](http://www.huntstates.com)  
9 New Street, St Helier,  
Jersey, JE2 3RA

CHRISTIE'S **Hunt Estates**  
INTERNATIONAL REAL ESTATE





FIRST FLOOR  
860 sq.ft. (79.9 sq.m.) approx.



TOTAL FLOOR AREA : 860 sq.ft. (79.9 sq.m.) approx.

Whilst every attempt has been made to ensure the accuracy of the floorplan contained here, measurements of doors, windows, rooms and any other items are approximate and no responsibility is taken for any error, omission or mis-statement. This plan is for illustrative purposes only and should be used as such by any prospective purchaser. The services, systems and appliances shown have not been tested and no guarantee as to their operability or efficiency can be given.  
Made with Metropix ©2024

# Hunt Estates

9 New Street, St Helier, Jersey, JE2 3RA, Channel Islands | +44 1534 860650 | [www.huntestates.com](http://www.huntestates.com) | [enquiries@huntestates.com](mailto:enquiries@huntestates.com)

Disclaimer: All information provided herein has been obtained from sources believed reliable, but may be subject to errors, omissions, change of price, prior sale, withdrawal without notice. Hunt Estates make no representation, warranty, or guarantee as to accuracy of any information contained herein. You should consult your advisors for an independent investigation of any properties. All viewings to be conducted through Hunt Estates.