



Hunt Estates

Spacious Two Bedroom Ground Floor Sea Front Apartment
St. Helier, Jersey

SPACIOUS TWO BEDROOM GROUND FLOOR SEA FRONT APARTMENT

This spacious (860 sq ft) two-bedroom ground floor apartment is located within a small block of apartments that face directly onto Victoria Avenue and the seafront, close to Millbrook.

The south facing apartment is filled with natural light and has a large, paved terrace which leads off the kitchen/living area. The terrace has a pedestrian gate opening to the pavement with a convenient crossing point close by giving access to the promenade and beach.

The apartment has been totally renovated throughout to a high standard and has all electric heating.

There is a good-sized single garage and one parking space to the front of the garage as well as shared visitor parking.

With the beach, promenade, Coronation Park, supermarket and frequent bus services all within a few minutes' walk, this apartment is all about the lifestyle it can offer.





Hunt Estates













FEATURES

- Sea front location
- Ground floor, south facing apartment
- Two double bedrooms
- Renovated throughout
- 80 sq m/ 860 sq ft
- Large paved terrace
- Excellent bus service close by
- No onward chain

INFORMATION

- Mains water and drains
- All electric heating
- Double glazed
- Garage and one parking space
- Service charge total £637.31 per quarter
- Service charge includes £248.17 per quarter for sinking fund
- Service charge includes water and parish rates
- Share transfer and Entitled/Licensed



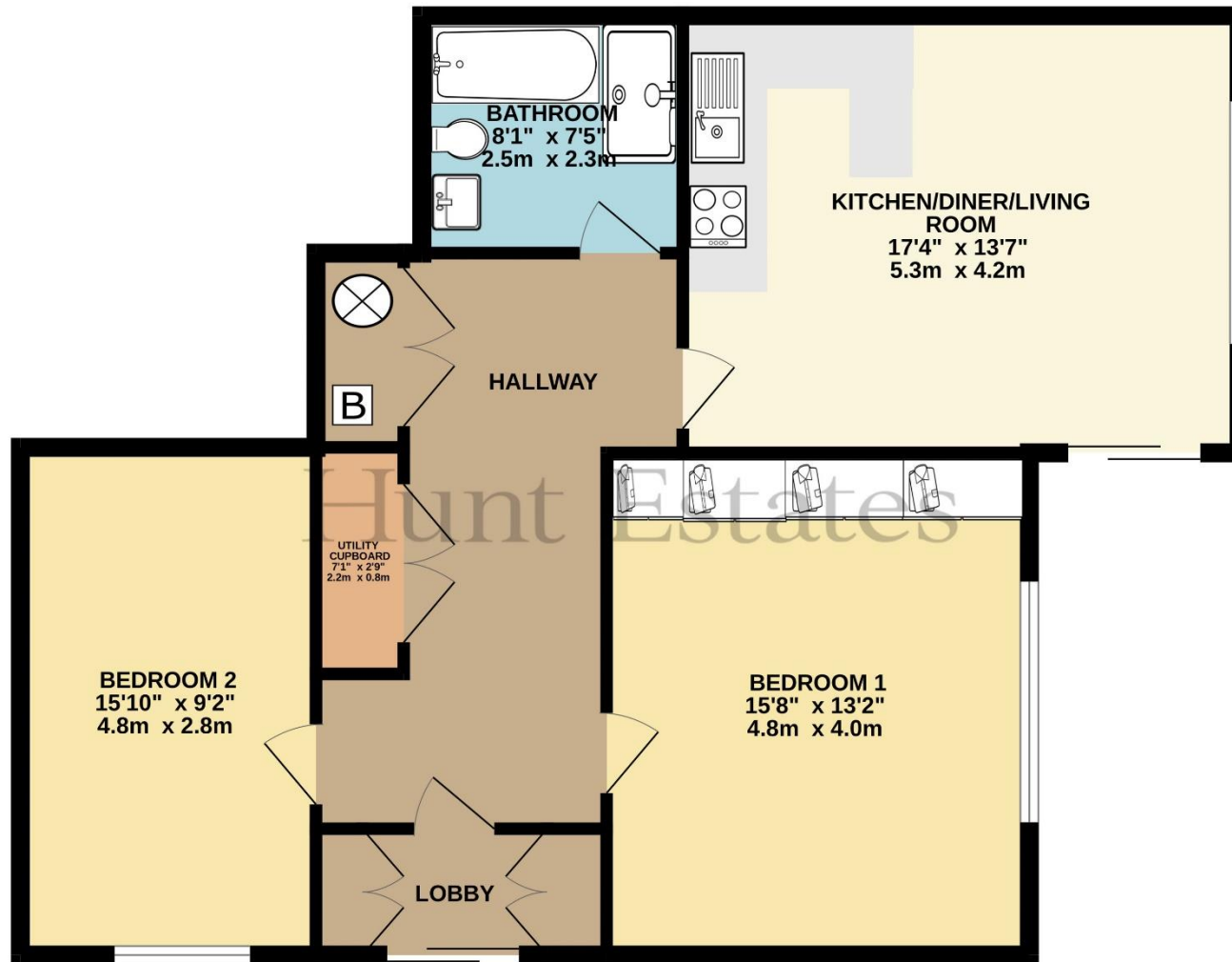
David Voak MNAEA
Property Negotiator

david@huntstates.com
T +44 (0)7797 725621
www.huntstates.com
9 New Street, St Helier,
Jersey, JE2 3RA

CHRISTIE'S | Hunt Estates
INTERNATIONAL REAL ESTATE



GROUND FLOOR
860 sq.ft. (79.9 sq.m.) approx.



TOTAL FLOOR AREA : 860 sq.ft. (79.9 sq.m.) approx.

Whilst every attempt has been made to ensure the accuracy of the floorplan contained here, measurements of doors, windows, rooms and any other items are approximate and no responsibility is taken for any error, omission or mis-statement. This plan is for illustrative purposes only and should be used as such by any prospective purchaser. The services, systems and appliances shown have not been tested and no guarantee as to their operability or efficiency can be given.
Made with Metropix ©2024

Hunt Estates

9 New Street, St Helier, Jersey, JE2 3RA, Channel Islands | +44 1534 860650 | www.huntestates.com | enquiries@huntestates.com

Disclaimer: All information provided herein has been obtained from sources believed reliable, but may be subject to errors, omissions, change of price, prior sale, withdrawal without notice. Hunt Estates make no representation, warranty, or guarantee as to accuracy of any information contained herein. You should consult your advisors for an independent investigation of any properties. All viewings to be conducted through Hunt Estates.