



Hunt Estates

Hunt Estates

Stunning Four Bedroom Home with Sea Views
St. Brelade, Jersey

STUNNING FOUR BEDROOM HOME WITH SEA VIEWS

This stunning 4-bedroom, 4-bathroom property has undergone a full renovation and has been finished to an exceptional standard. Spanning across three floors, this spacious property offers 2,747 sq. ft of living space, featuring generously sized rooms and breath-taking panoramic sea views.

The large sitting room boasts high ceilings with oak wooden beams sourced from France. Abundant natural light floods the room through large sash windows, while a wood burner and double doors leading to the balcony overlooking St Aubin's Bay, add to the appeal.

The exquisite Edwin Loxley bespoke kitchen combines contemporary design with traditional craftsmanship. Its captivating features include, a central island, and beautiful stone worktops. Additionally, a thoughtfully designed pantry offers versatility as prep' kitchen.

The main bedroom suite is a sanctuary of luxury, with its vaulted ceiling, walk-in dressing room, and an en-suite bathroom complete with a walk-in shower and a luxurious bath. Two additional en-suite bedrooms with built-in wardrobes, a fourth bedroom, family bathroom, utility room, two cloakrooms and wine cellar complete the accommodation.

A short stroll down the hill will lead you to the charming St Aubin's Village and its picturesque harbour, where a plethora of excellent waterside restaurants, cafes, bars, and shops await. This property is located just a few miles from both St. Helier to the East and the airport to the West.

Step onto the lovely, tiled sun terrace, which serves as an exceptional entertainment space. There is a terrace garden room with fitted units which provides space for garden furniture, drinks, food, perfect for entertaining needs in the summer months.

The property would make a good lock-up-and-leave-home for those that travel or want a low maintenance home.

Additionally, there is an integrated single garage and a second single garage across the road.

Available to rent from 1 September 2024 to Entitled/Licensed residents.































Hunt Estates

FEATURES

- Amazing sea views of St Aubin's Bay to the fort and beyond
- Stunning four bedroom, four bathrooms
- Main bedroom with vaulted ceiling, walk-in dressing room and en-suite bathroom
- Fabulous sun terrace with garden room
- 2,747 sq. ft of accommodation set across three floors
- Short walk to St Aubin's Village and picturesque harbour
- Perfect lock-up-and-leave home

INFORMATION

- Complete renovation in April 2023
- Mains water and drains
- Hard wired fire alarm system
- Wet underfloor heating throughout.
- Integrated single garage and separate single garage
- Occupier rates for 2022 were £376.20 (please note this may change since the layout has changed)
- Available 1 September to Entitled/Licensed residents

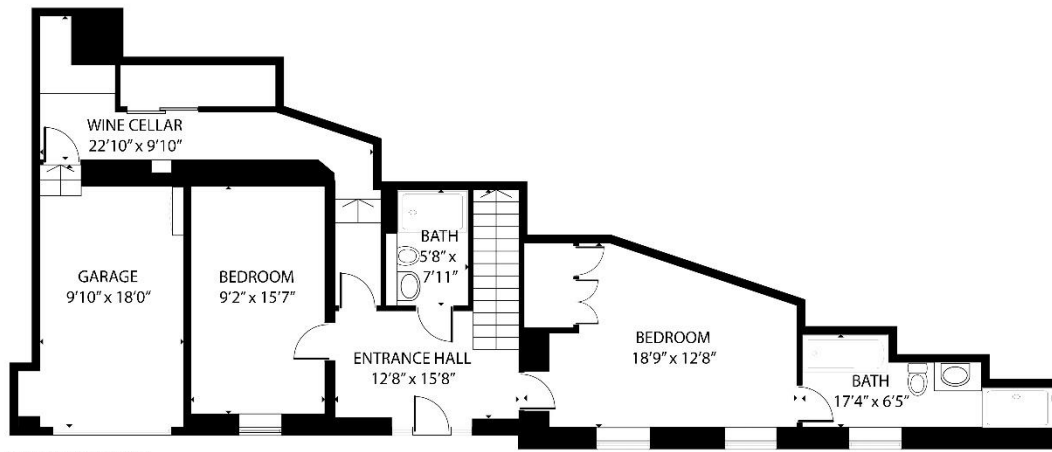


Gill Hunt, FNAEA
Director

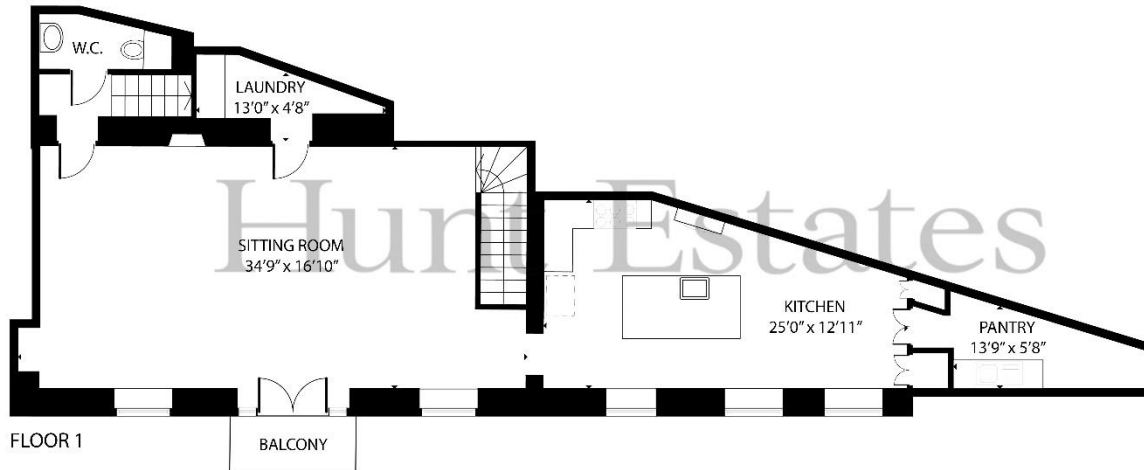
gill@huntstates.com
T +44 (0)7797 721881
www.huntstates.com
9 New Street, St Helier,
Jersey, JE2 3RA

CHRISTIE'S | Hunt Estates
INTERNATIONAL REAL ESTATE

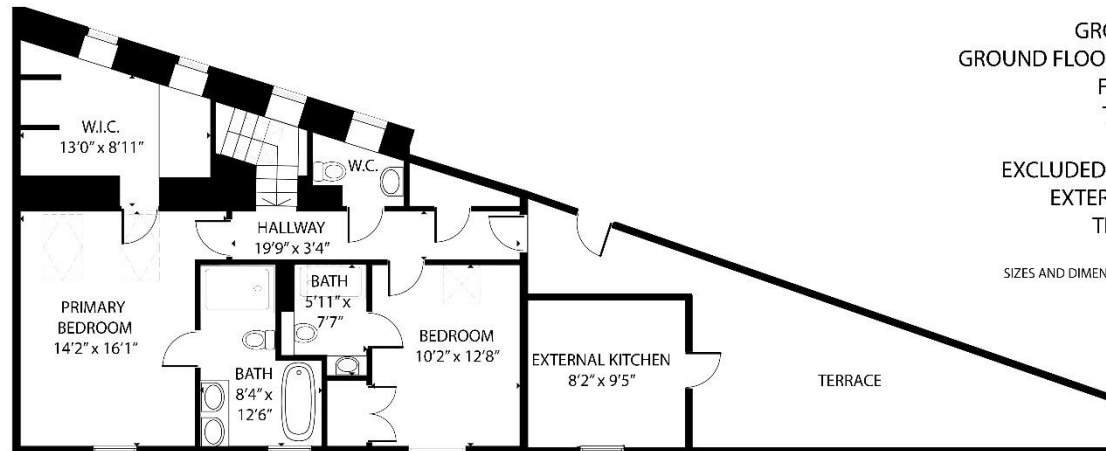




GROUND FLOOR



FLOOR 1



FLOOR 2

GROSS INTERNAL AREA
 GROUND FLOOR: 840 sq. ft, FLOOR 1: 1122 sq. ft
 FLOOR 2: 785 sq. ft
 TOTAL: 2747 sq. ft

EXCLUDED AREAS: GARAGE: 183 sq. ft,
 EXTERNAL KITCHEN: 76 sq. ft
 TERRACE, BALCONY

SIZES AND DIMENSIONS ARE APPROXIMATE, ACTUAL MAY VARY

Hunt Estates

9 New Street, St Helier, Jersey, JE2 3RA, Channel Islands | +44 1534 860650 | www.huntestates.com | enquiries@huntestates.com

Disclaimer: All information provided herein has been obtained from sources believed reliable, but may be subject to errors, omissions, change of price, prior sale, withdrawal without notice. Hunt Estates make no representation, warranty, or guarantee as to accuracy of any information contained herein. You should consult your advisors for an independent investigation of any properties. All viewings to be conducted through Hunt Estates.