



Hunt Estates

Rural Barn Conversion with Three Bedrooms  
Trinity, Jersey



## RURAL BARN CONVERSION WITH THREE BEDROOMS

This attractive granite barn conversion in the rural parish of Trinity is set over three floors and offers a separate kitchen that flows seamlessly into the good-sized living/dining room. French doors open to a sunny aspect enclosed garden, creating a perfect indoor-outdoor flow. The accommodation includes three double bedrooms, two of which are ensuite, along with a house bathroom and a ground floor cloakroom.

The low maintenance west-facing garden is enclosed by privacy fencing, making it child and pet friendly. Adjacent to the property, within a traditional courtyard setting, are two side-by-side parking spaces and a garage with a useful mezzanine storage area above. There is also visitor parking available.

The tranquil country lanes offer plenty of options for walks, while still being less than a 3-mile drive to St Helier town centre.

































## FEATURES

- End of terrace barn conversion
- 3 double bedrooms
- 3 bathrooms and cloakroom
- Separate kitchen overlooking garden
- Sunny aspect enclosed garden
- Quiet location set back from the road

## INFORMATION

- Mains water and drains
- Oil fired central heating
- Double glazed
- Heritage listed at level 3
- Garage with storage above
- Side by side parking for 2 cars
- Visitor parking available
- Parish rates for 2023 were £466.42
- Freehold and Entitled/Licensed



Sarah Gallichan  
Property Negotiator

sarah@huntestates.com  
T +44 (0)7700 713574  
www.huntestates.com  
9 New Street, St Helier,  
Jersey, JE2 3RA

CHRISTIE'S | Hunt Estates  
INTERNATIONAL REAL ESTATE

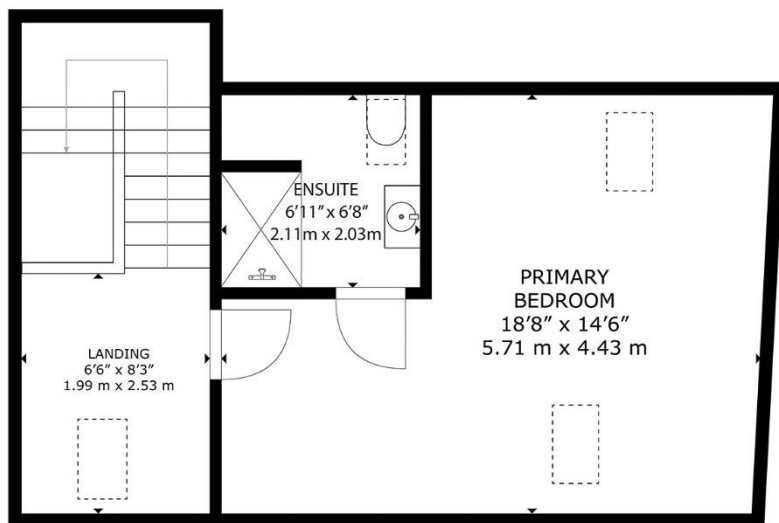


David Voak MNAEA  
Property Negotiator

david@huntestates.com  
T +44 (0)7797 725621  
www.huntestates.com  
9 New Street, St Helier,  
Jersey, JE2 3RA

CHRISTIE'S | Hunt Estates  
INTERNATIONAL REAL ESTATE

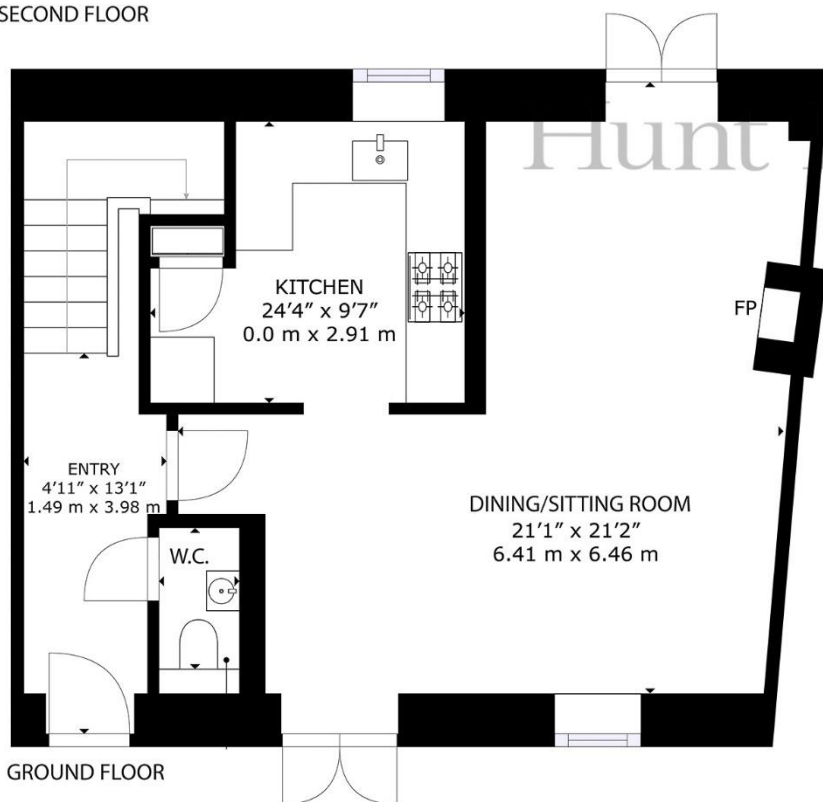




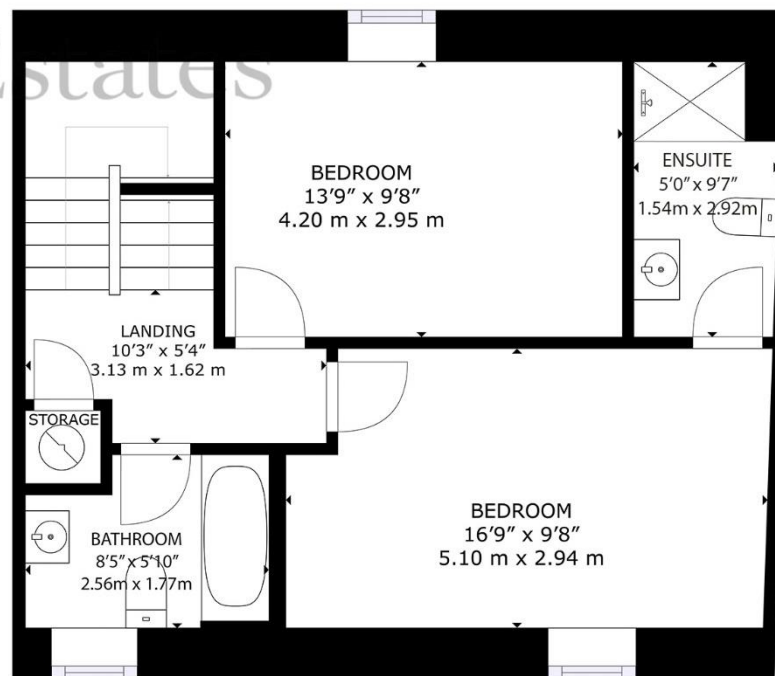
SECOND FLOOR

GROSS INTERNAL AREA  
 GROUND FLOOR: 600 sq. ft, 55 m2, FIRST FLOOR: 579 sq. ft, 53 m2  
 SECOND FLOOR: 390 sq. ft, 36 m2  
 TOTAL: 1569 sq. ft, 145 m2

SIZES AND DIMENSIONS ARE APPROXIMATE, ACTUAL MAY VARY



GROUND FLOOR



FIRST FLOOR





# Hunt Estates

9 New Street, St Helier, Jersey, JE2 3RA, Channel Islands | +44 1534 860650 | [www.huntestates.com](http://www.huntestates.com) | [enquiries@huntestates.com](mailto:enquiries@huntestates.com)

Disclaimer: All information provided herein has been obtained from sources believed reliable, but may be subject to errors, omissions, change of price, prior sale, withdrawal without notice. Hunt Estates make no representation, warranty, or guarantee as to accuracy of any information contained herein. You should consult your advisors for an independent investigation of any properties. All viewings to be conducted through Hunt Estates.