



# Hunt Estates

Hunt Estates

Spacious Two Bedroom Apartment with Breathtaking Views  
XXX, Jersey

## SPACIOUS TWO BEDROOM APARTMENT WITH BREATHTAKING VIEWS

Located on the northeast of the island, this spacious 2-bedroom, 2-bathroom apartment in a Landmark property offers breathtaking, panoramic views across the North Coast and one of the most beautiful bays on the island. The moment you step inside this apartment, you are greeted by stunning sea views that captivate the eye.

Although open plan, living and dining area feel separate to the kitchen open out onto a private balcony that overlooks the communal gardens, headland, and sea, extending to far-reaching views of France and Sark. The apartment features a large fully fitted kitchen with the added bonus of a storage cupboard.

The primary bedroom, with its en-suite shower room also benefits from a separate private balcony where one can enjoy the beautiful views and stunning sunsets. The second bedroom, which is also of a good size (12.10ft x 11.10ft), offers the added convenience of built-in wardrobes. Additionally, there is a family bathroom.

Externally there are communal gardens, which overlook the bay. The apartment has 2 allocated parking spaces and there is visitor parking available for the development.

Within equal distance are the delightful Bouley Bay and Rozel Bay offering various eateries and pubs. For those that enjoy walking, there are many cliff paths nearby.





LA TOURELLE













A scenic view of a coastal estate. In the foreground, there is a well-maintained green lawn with a wooden picket fence. To the right, a small table and two chairs are set up. A cluster of palm trees stands near the center. The middle ground shows a lush green hillside with various trees and shrubs. In the background, the ocean stretches to the horizon under a clear blue sky with light clouds. The text "Hunt Estates" is overlaid in the center of the image.

Hunt Estates

## FEATURES

- Stunning views across the North Coast
- Equal distance to Bouley Bay and Rozel Bay
- Two bedroom, two bathroom apartment
- Two private balconies with sea views
- Communal gardens
- Good size offering approx. 1,171 sq ft of living space

## INFORMATION

- Borehole water
- Mains drains
- Gas heating
- Double glazed
- Parking for 2 cars with visitor parking available
- Parish rates for 2023 were £390
- Service charge £192 per month
- Flying Freehold and Entitled/Licensed



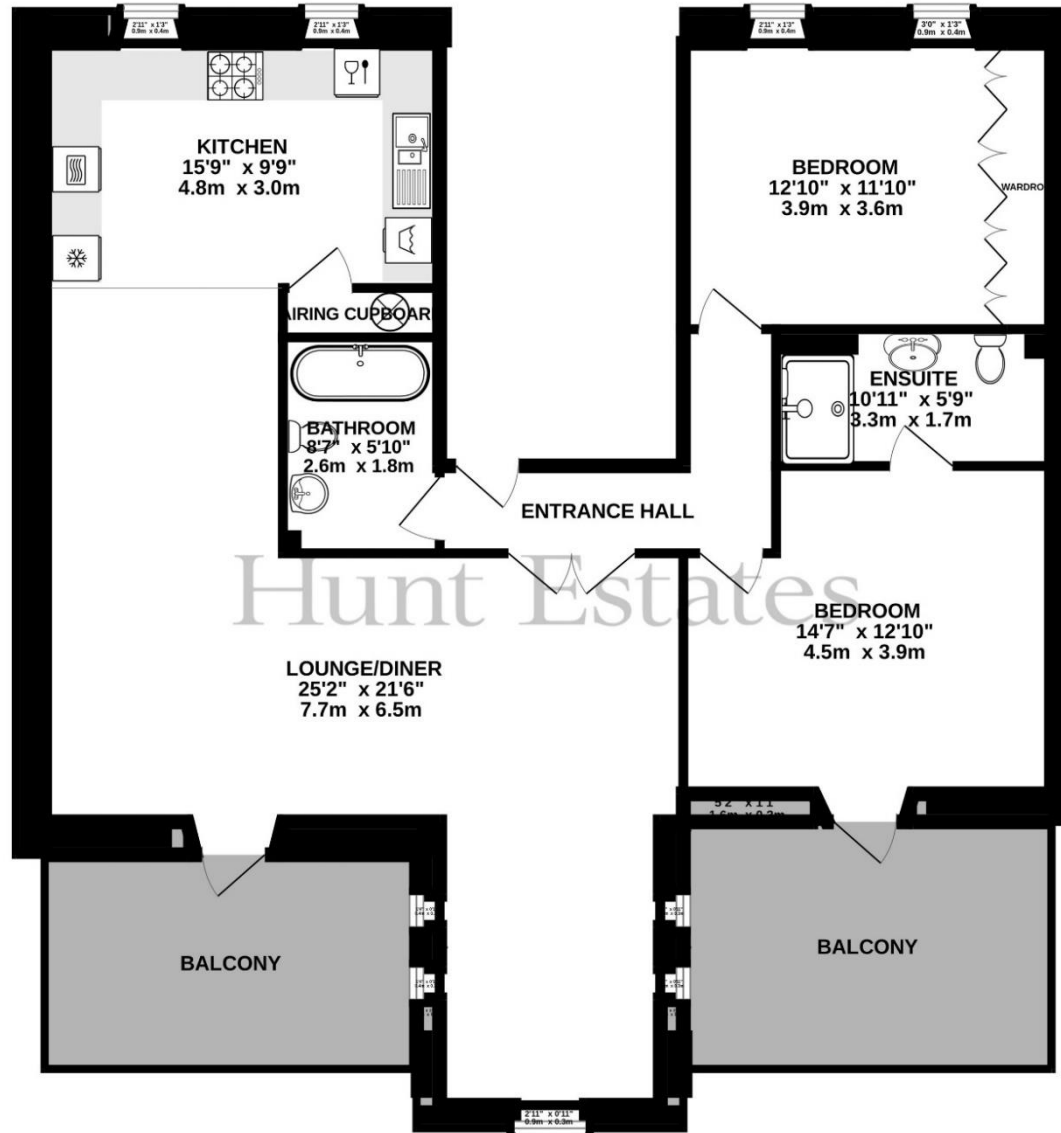
Sarah Gallichan  
Property Negotiator

sarah@huntstates.com  
T +44 (0)7700 713574  
www.huntstates.com  
9 New Street, St Helier,  
Jersey, JE2 3RA

CHRISTIE'S | Hunt Estates  
INTERNATIONAL REAL ESTATE



GROUND FLOOR  
1171 sq.ft. (108.8 sq.m.) approx.



TOTAL FLOOR AREA : 1171 sq.ft. (108.8 sq.m.) approx.

Whilst every attempt has been made to ensure the accuracy of the floorplan contained here, measurements of doors, windows, rooms and any other items are approximate and no responsibility is taken for any error, omission or mis-statement. This plan is for illustrative purposes only and should be used as such by any prospective purchaser. The services, systems and appliances shown have not been tested and no guarantee as to their operability or efficiency can be given.  
Made with Metropix ©2024

# Hunt Estates

9 New Street, St Helier, Jersey, JE2 3RA, Channel Islands | +44 1534 860650 | [www.huntestates.com](http://www.huntestates.com) | [enquiries@huntestates.com](mailto:enquiries@huntestates.com)

Disclaimer: All information provided herein has been obtained from sources believed reliable, but may be subject to errors, omissions, change of price, prior sale, withdrawal without notice. Hunt Estates make no representation, warranty, or guarantee as to accuracy of any information contained herein. You should consult your advisors for an independent investigation of any properties. All viewings to be conducted through Hunt Estates.