



Hunt Estates

Attractive Granite Semi-Detached Home
St. Martin, Jersey

ATTRACTIVE GRANITE SEMI-DETACHED HOME

This charming granite property is situated just a stone's throw away from Archirondel beach.

Internally this property benefits from a good sized eat-in kitchen, large sitting room with French doors leading out on to a private south-east facing garden and cloakroom.

Upstairs the main bedroom suite is a good size and overlooks the garden. There is a second double bedroom, house bathroom and linen storage.

The location is peaceful and having the beach right on your doorstep, this home is idyllic in the summer months for beach BBQ'S and swimming.

There is also the advantage of being on a frequent bus route, and a short drive to Gorey enabling you to enjoy all the lovely restaurants and views it has to offer.

There is underground parking, side by side, for two cars and a external visitor car park.

Viewings of this wonderful home are not to be missed.

















FEATURES

- Semi-detached granite home
- Large eat-in kitchen
- Private garden
- Two bedrooms, two bathrooms
- Stone throw to the beach
- Peaceful location

INFORMATION

- Mains drains and water
- Wet electric heating
- Double glazed
- Two side by side underground parking spaces
- Visitor parking available
- Service charges £2,480 per annum
- Parish rates for 2023 were £614.94
- Share transfer



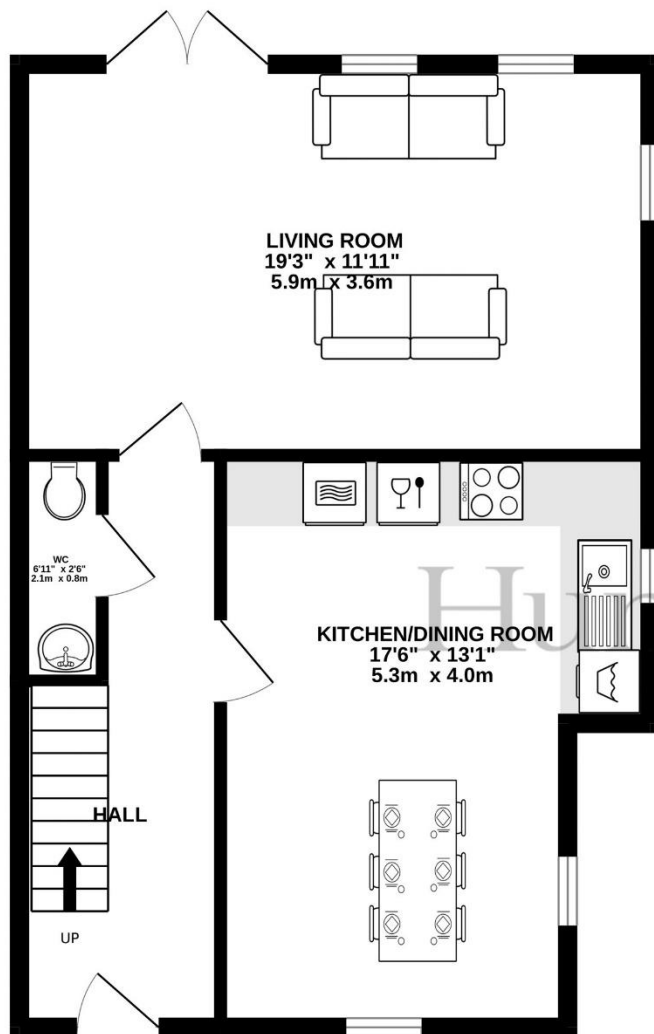
Sacha Butlin
Property Negotiator

sacha@huntstates.com
T +44 (0)7829 917449
www.huntstates.com
9 New Street, St Helier,
Jersey, JE2 3RA

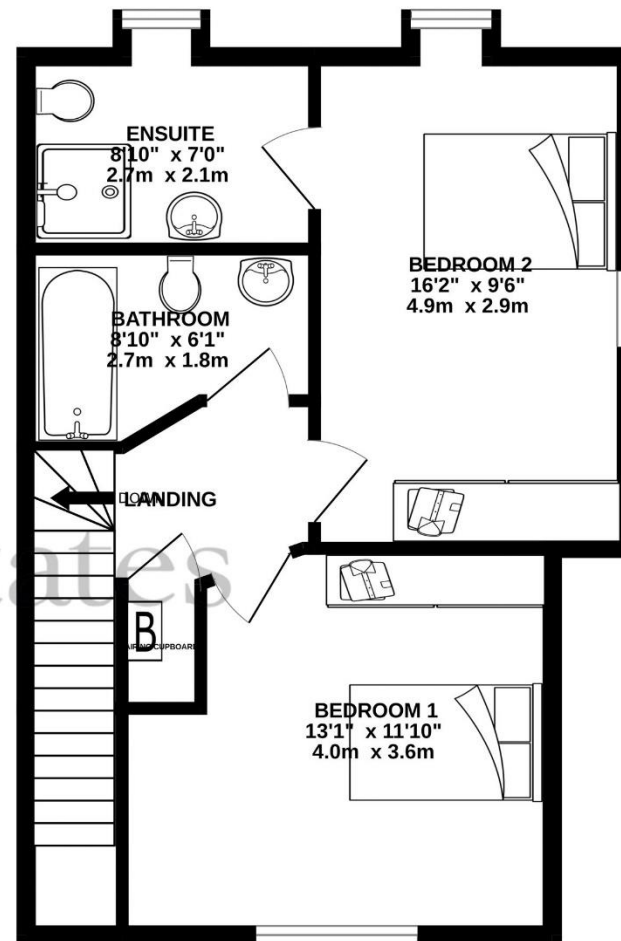
CHRISTIE'S | Hunt Estates
INTERNATIONAL REAL ESTATE



GROUND FLOOR
543 sq.ft. (50.5 sq.m.) approx.



1ST FLOOR
470 sq.ft. (43.7 sq.m.) approx.



SEMI DETACHED HOUSE

TOTAL FLOOR AREA : 1013 sq.ft. (94.1 sq.m.) approx.

Whilst every attempt has been made to ensure the accuracy of the floorplan contained here, measurements of doors, windows, rooms and any other items are approximate and no responsibility is taken for any error, omission or mis-statement. This plan is for illustrative purposes only and should be used as such by any prospective purchaser. The services, systems and appliances shown have not been tested and no guarantee as to their operability or efficiency can be given.
Made with Metropix ©2024

Hunt Estates

Disclaimer: All information provided herein has been obtained from sources believed reliable, but may be subject to errors, omissions, change of price, prior sale, withdrawal without notice. Hunt Estates make no representation, warranty, or guarantee as to accuracy of any information contained herein. You should consult your advisors for an independent investigation of any properties. All viewings to be conducted through Hunt Estates.

9 New Street, St Helier, Jersey, JE2 3RA, Channel Islands | +44 1534 860650 | www.huntestates.com | enquiries@huntestates.com