



HOME BY THE SEA

An opportunity to purchase a property set by the sea in St. Clement. There is potential to create a completely new home on the site subject to planning consent.

It currently comprises; entrance hall, 24 ft sitting room/diner, kitchen, 3 bedrooms (1 double and 2 single), and a house bathroom.

The property is set on one floor and is 963 sq ft.

There is a patio with sea views and to the rear of the property a very pleasant garden, laid to lawn with flower borders.

There is a single garage and parking for one car on an adjacent tarmac parking plot.

Please note that the neighbouring property is also on the market by the same family asking £2,375,000 on our website Ref no: 1284. It may interest a buyer to purchase both properties to create an interesting project or two generation living.

















FEATURES

- Coastal home
- Available immediately with no upward chain
- 3 bedrooms, 1 bathroom
- Potential to create a complete new home subject to planning
- Patio with sea views

INFORMATION

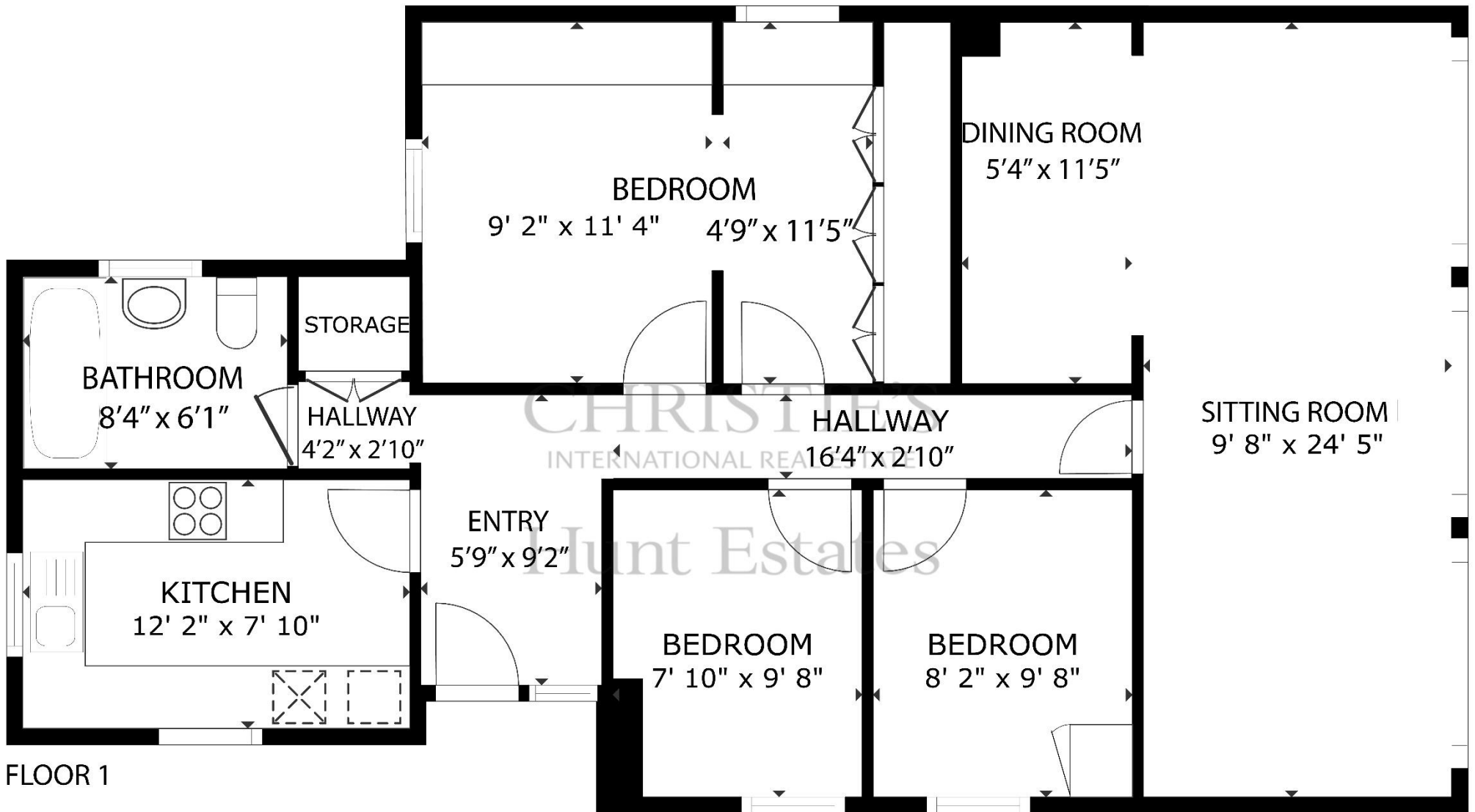
- Mains water and drains
- Electric heating
- Double glazed
- 963 sq ft
- Single garage and parking for 1 car
- Parish rates for 2023 were £482.40
- Freehold and Entitled/Licensed



Gill Hunt, FNAEA
Director

gill@huntestates.com
T +44 (0)7797 721881
www.huntestates.com
9 New Street, St Helier,
Jersey, JE2 3RA

CHRISTIE'S | Hunt Estates
INTERNATIONAL REAL ESTATE



FLOOR 1

GROSS INTERNAL AREA
 FLOOR 1: 963 sq. ft
 TOTAL: 963 sq. ft

SIZES AND DIMENSIONS ARE APPROXIMATE, ACTUAL MAY VARY

As the selected exclusive affiliate of Christie's International Real Estate in Jersey, Channel Islands, Hunt Estates combines local expertise with global reach via Christie's affiliation to the most famous real estate companies in the world.

An invitation-only affiliate network, Christie's International Real Estate selected Hunt Estates in 2020 to represent the famous Christie's brand in the sphere of luxury real estate in Jersey.

CHRISTIE'S | Hunt Estates

INTERNATIONAL REAL ESTATE

9 New Street, St Helier, Jersey, JE2 3RA, Channel Islands | +44 1534 860650 | www.huntestates.com | enquiries@huntestates.com

Disclaimer: All information provided herein has been obtained from sources believed reliable, but may be subject to errors, omissions, change of price, prior sale, withdrawal without notice. Hunt Estates make no representation, warranty, or guarantee as to accuracy of any information contained herein. You should consult your advisors for an independent investigation of any properties. All viewings to be conducted through Hunt Estates.