



CHRISTIE'S
INTERNATIONAL REAL ESTATE

Hunt Estates

COASTAL DETACHED HOME

A detached home set above the beach on the east coast of Jersey. The property enjoys a most desirable location with stunning views from all principal rooms.

There is a grassed garden area and a good size terrace on the sea side of the home where one can enjoy al-fresco dining and family gatherings all whilst enjoying a beach-lifestyle.

The tidal seascape is dramatic and ever-changing with a sandy beach and rock pools revealed with the edging tide. Not only is this a blissful location on a sunny day, it is as equally beautiful on a full moon or a starry night.

Comprising; entrance hall, 20 ft wide sitting room, and together with the dining room have picture windows over the sea view, kitchen and conservatory.

First floor comprises; three bedrooms, one of which is currently set up as a study, house bathroom with separate shower and WC.

There is a garden to the rear of the property with space to extend subject to planning permission.

The garden has two lawned areas with mature shrubs. There is a gated driveway which can provide further parking if desired.

Set close across the lane is a double garage with electric door and parking for two cars alongside.

Built in 1995 this home is immediately ready for a new owner with no upward chain. It is in need of some upgrading and presents a wonderful opportunity to create a forever home securing a prime location.

Please note that situated on the east of this home is a separate property also owned in the same family available to purchase at an asking price of £1,275,000. Further details are available on our website with Ref no. 1285. Please contact us for more information.

























FEATURES

- Coastal detached home
- Available immediately with no upward chain
- Sea views from main rooms
- 3 bedrooms, 1 bathroom + 2 WCs
- Further scope to extend (subject to planning permission)
- Terrace dining by the beach

INFORMATION

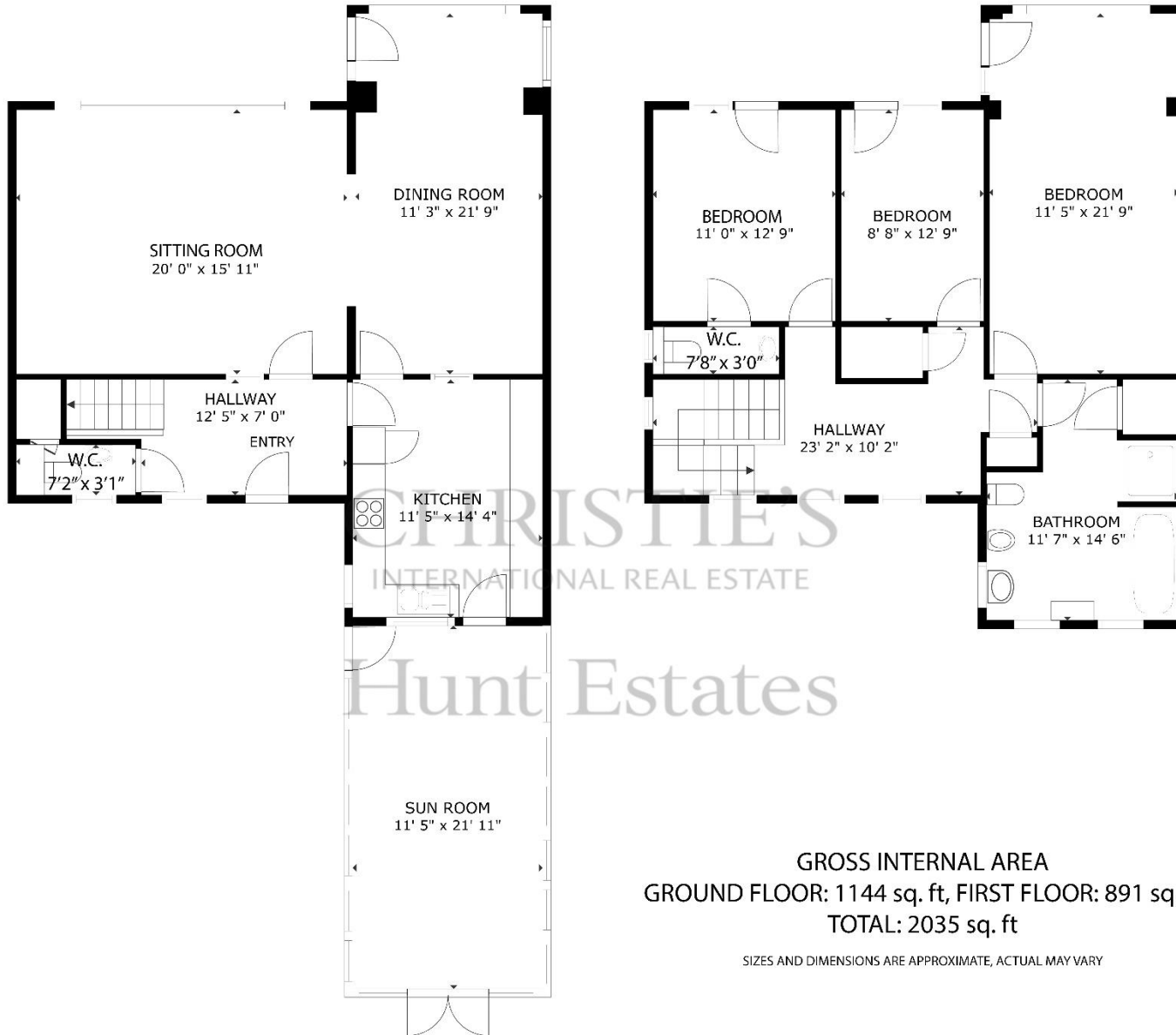
- Mains water and drains
- Gas central heating
- Double glazed
- 2,035 sq ft
- Double garage and parking for approx. 5 cars
- Parish rates for 2023 were £687.02
- Freehold and Entitled/Licensed



Gill Hunt, FNAEA
Director

gill@huntestates.com
T +44 (0)7797 721881
www.huntestates.com
9 New Street, St Helier,
Jersey, JE2 3RA

CHRISTIE'S | Hunt Estates
INTERNATIONAL REAL ESTATE



GROSS INTERNAL AREA
 GROUND FLOOR: 1144 sq. ft, FIRST FLOOR: 891 sq. ft
 TOTAL: 2035 sq. ft

SIZES AND DIMENSIONS ARE APPROXIMATE, ACTUAL MAY VARY

As the selected exclusive affiliate of Christie's International Real Estate in Jersey, Channel Islands, Hunt Estates combines local expertise with global reach via Christie's affiliation to the most famous real estate companies in the world.

An invitation-only affiliate network, Christie's International Real Estate selected Hunt Estates in 2020 to represent the famous Christie's brand in the sphere of luxury real estate in Jersey.

CHRISTIE'S | Hunt Estates

INTERNATIONAL REAL ESTATE

9 New Street, St Helier, Jersey, JE2 3RA, Channel Islands | +44 1534 860650 | www.huntestates.com | enquiries@huntestates.com

Disclaimer: All information provided herein has been obtained from sources believed reliable, but may be subject to errors, omissions, change of price, prior sale, withdrawal without notice. Hunt Estates make no representation, warranty, or guarantee as to accuracy of any information contained herein. You should consult your advisors for an independent investigation of any properties. All viewings to be conducted through Hunt Estates.