



CHRISTIE'S | Hunt Estates
INTERNATIONAL REAL ESTATE

Spacious Apartment Overlooking The Royal Jersey Golf Course
Grouville, Jersey

SPACIOUS APARTMENT OVERLOOKING THE ROYAL JERSEY GOLF COURSE

This generously proportioned apartment occupies the first floor of the central block within the highly coveted Links Court development. All bedrooms and sitting room offers breathtaking views across the golf course and towards the French coast, this bright and airy apartment has undergone modernization in recent years.

Boasting a spacious and welcoming layout, ideal for hosting guests, the apartment features an open-plan living area complete with a designated dining space. Accessible from this area is your own private balcony, as well as direct steps leading down to the communal garden below.

Both of the two double bedrooms boast en suite facilities and balcony access. Additionally, there is an office/third bedroom, a kitchen equipped with integrated appliances, an entrance hall complete with a storage cupboard and a separate WC.

Further enhancing its appeal, the property includes a garage with tandem parking for two cars, along with visitor parking. Additionally, residents have access to a convenient laundry room located on the ground floor.





CHRISTIE'S
INTERNATIONAL REAL ESTATE
Hunt Estates











CHR
INTERNATIONAL
Hunt



FEATURES

- Spacious first floor apartment
- Two bedrooms, two bathrooms
- Office/third bedroom
- Split level sitting/dining room
- Balcony with far reaching views
- Communal gardens
- Separate store

INFORMATION

- Mains water and drains
- Electric heating
- Lift access
- Full double glazing
- Garage with tandem parking for two cars
- Garage door was replaced with new and automated/motor driven door
- Visitor parking available
- Service charge £1,000 per quarter to include all rates
- Additional £300 per month for decoration and new lift fund (to drop to £200 once new lift has been purchased)
- Share Transfer



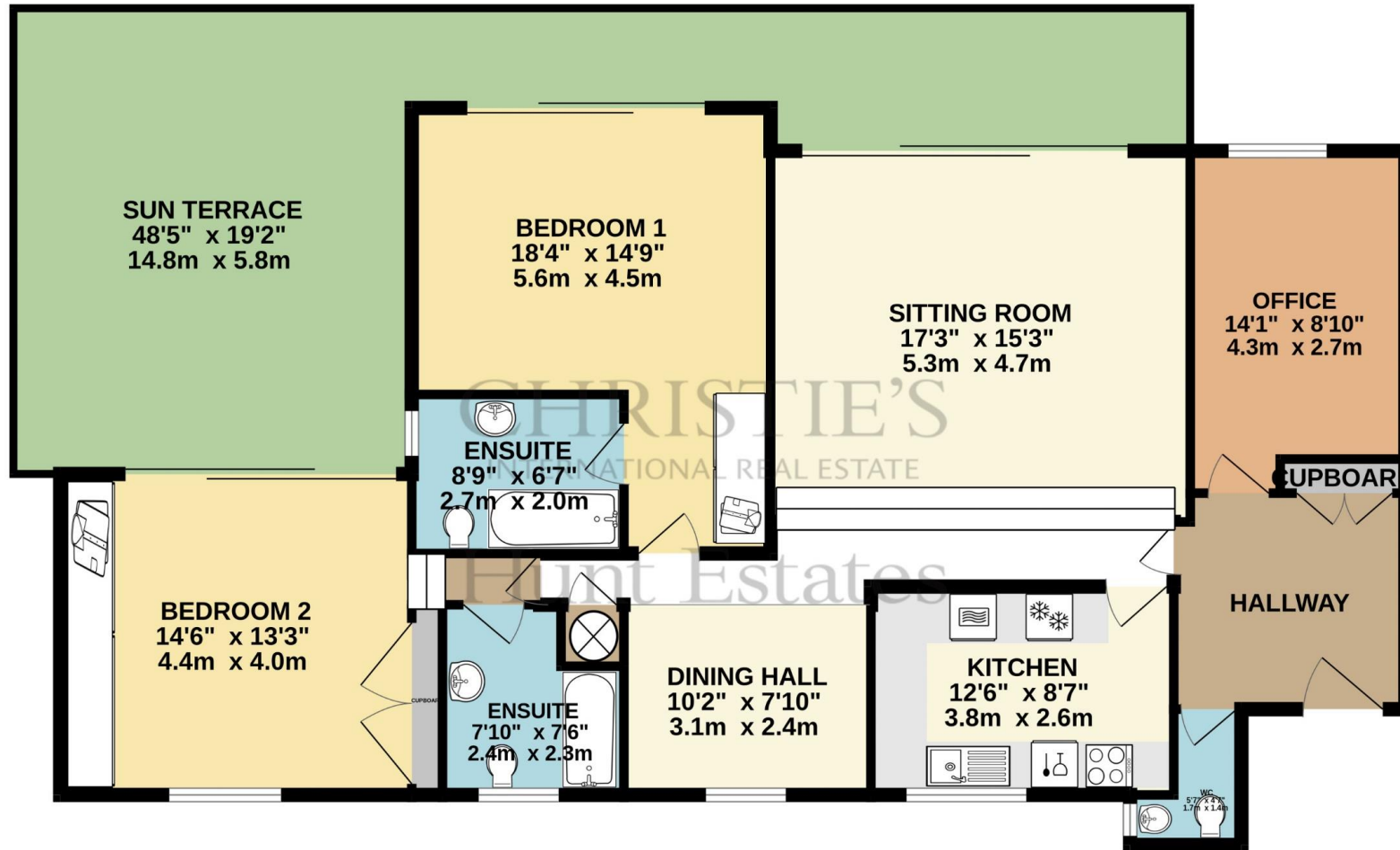
Sarah Gallichan
Property Negotiator

sarah@huntstates.com
T +44 (0)7700 713574
www.huntstates.com
9 New Street, St Helier,
Jersey, JE2 3RA

CHRISTIE'S | Hunt Estates
INTERNATIONAL REAL ESTATE



FIRST FLOOR
1221 sq.ft. (113.5 sq.m.) approx.



2 BED APARTMENT

TOTAL FLOOR AREA : 1221 sq.ft. (113.5 sq.m.) approx.

Whilst every attempt has been made to ensure the accuracy of the floorplan contained here, measurements of doors, windows, rooms and any other items are approximate and no responsibility is taken for any error, omission or mis-statement. This plan is for illustrative purposes only and should be used as such by any prospective purchaser. The services, systems and appliances shown have not been tested and no guarantee as to their operability or efficiency can be given.
Made with Metropix ©2024

As the selected exclusive affiliate of Christie's International Real Estate in Jersey, Channel Islands, Hunt Estates combines local expertise with global reach via Christie's affiliation to the most famous real estate companies in the world.

An invitation-only affiliate network, Christie's International Real Estate selected Hunt Estates in 2020 to represent the famous Christie's brand in the sphere of luxury real estate in Jersey.



CHRISTIE'S | **Hunt Estates**
INTERNATIONAL REAL ESTATE

9 New Street, St Helier, Jersey, JE2 3RA, Channel Islands | +44 1534 860650 | www.huntestates.com | enquiries@huntestates.com

Disclaimer: All information provided herein has been obtained from sources believed reliable, but may be subject to errors, omissions, change of price, prior sale, withdrawal without notice. Hunt Estates make no representation, warranty, or guarantee as to accuracy of any information contained herein. You should consult your advisors for an independent investigation of any properties. All viewings to be conducted through Hunt Estates.