



Hunt Estates

Semi-detached bungalow close to the beach
Grouville, Jersey

SEMI-DETACHED BUNGALOW CLOSE TO THE BEACH

A two-bedroom, semi-detached bungalow situated in the parish of Grouville.

Comprising; entrance hall, cloakroom, sitting room with fireplace and access to the garden, dining room, separate kitchen with utility space, storeroom, two double bedrooms, both with fitted wardrobes and en-suite bathrooms.

Externally, it benefits from a tarmac parking area for 3 cars and a single garage with external storeroom,

There is a good sized lawned garden, with a gate that leads to a private lane with access to the beach (approx. 140m away).

There is also a fully boarded loft, which is great for extra storage.

The property would benefit from some modernisation.

Situated on the number 1 bus route, access to town is easy and convenient. Gorey harbour with its restaurants, bars and hotels is only a 5-minute drive away and 15-minute walk and for those who love to play golf, the Royal Jersey Golf Club is also only a 3-minute drive.

Being in close proximity to local amenities, it is in a sought-after location and will appeal to families and anyone scaling down.

Viewings come highly recommended.















Hunt Est





Hunt Estates







v







Private access to the beach down a private lane
(approx. 140m away)



FEATURES

- Semi-detached bungalow
- Two bedrooms, two bathrooms plus cloakroom
- Good sized sitting room and dining room
- South and west facing lawned garden
- Pathway access to the beach
- Close to local amenities and on a good bus route
- Would benefit from some modernisation

INFORMATION

- Mains water and drains
- Double glazed windows
- Oil fired central heating
- Single garage and parking for 3 cars
- Parish rates for 2023 were £494
- Freehold and Entitled/Licensed



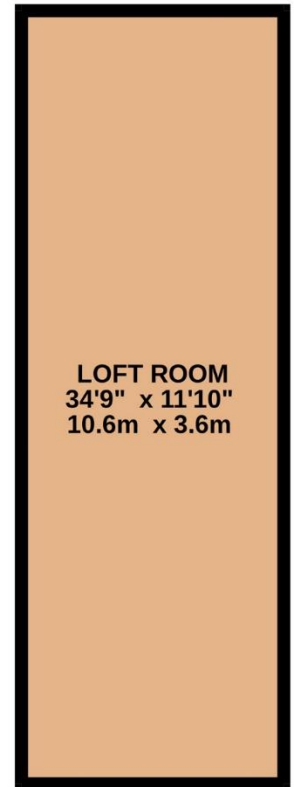
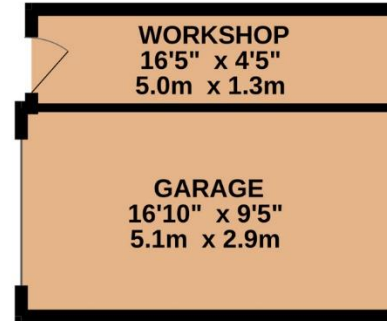
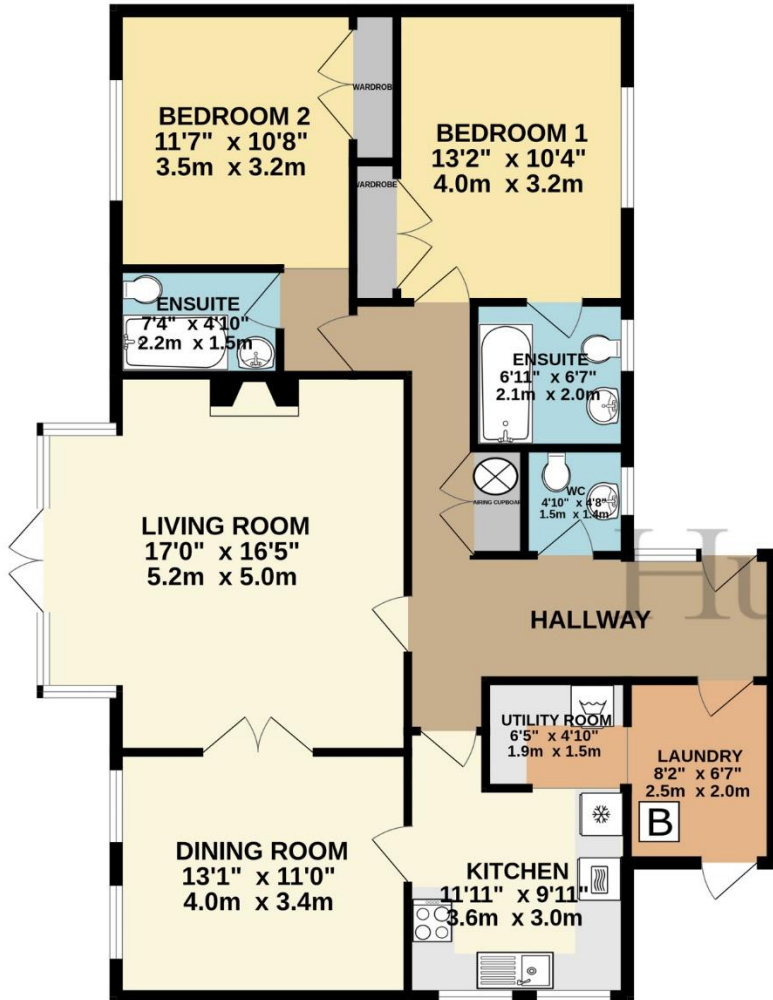
Gill Hunt, FNAEA
Director

gill@huntstates.com
T +44 (0)7797 721881
www.huntstates.com
9 New Street, St Helier,
Jersey, JE2 3RA

CHRISTIE'S | Hunt Estates
INTERNATIONAL REAL ESTATE

GROUND FLOOR
1375 sq.ft. (127.7 sq.m.) approx.

1ST FLOOR
411 sq.ft. (38.2 sq.m.) approx.



SEMI DETACHED HOUSE

TOTAL FLOOR AREA : 1785 sq.ft. (165.9 sq.m.) approx.

Whilst every attempt has been made to ensure the accuracy of the floorplan contained here, measurements of doors, windows, rooms and any other items are approximate and no responsibility is taken for any error, omission or mis-statement. This plan is for illustrative purposes only and should be used as such by any prospective purchaser. The services, systems and appliances shown have not been tested and no guarantee as to their operability or efficiency can be given.

Made with Metropix ©2024

Hunt Estates

9 New Street, St Helier, Jersey, JE2 3RA, Channel Islands | +44 1534 860650 | www.huntestates.com | enquiries@huntestates.com

Disclaimer: All information provided herein has been obtained from sources believed reliable, but may be subject to errors, omissions, change of price, prior sale, withdrawal without notice. Hunt Estates make no representation, warranty, or guarantee as to accuracy of any information contained herein. You should consult your advisors for an independent investigation of any properties. All viewings to be conducted through Hunt Estates.