



Hunt Estates

Charming Three-Bedroom Bungalow on Spacious Plot
St. Saviour, Jersey

CHARMING THREE-BEDROOM BUNGALOW ON SPACIOUS PLOT

This charming three-bedroom bungalow is located on a generously sized plot within a cul-de-sac in St. Saviour. Recently refurbished and modernized by its current owners, it boasts a stunning contemporary interior.

Upon entering, you'll find a handy boot room that flows into the entrance hall. This level then comprises of a spacious open sitting room, a well-appointed kitchen, a versatile sunroom with the potential to serve as multiple spaces, and a convenient separate utility cupboard, the property also features two double bedrooms, a single bedroom, and two modern bathrooms.

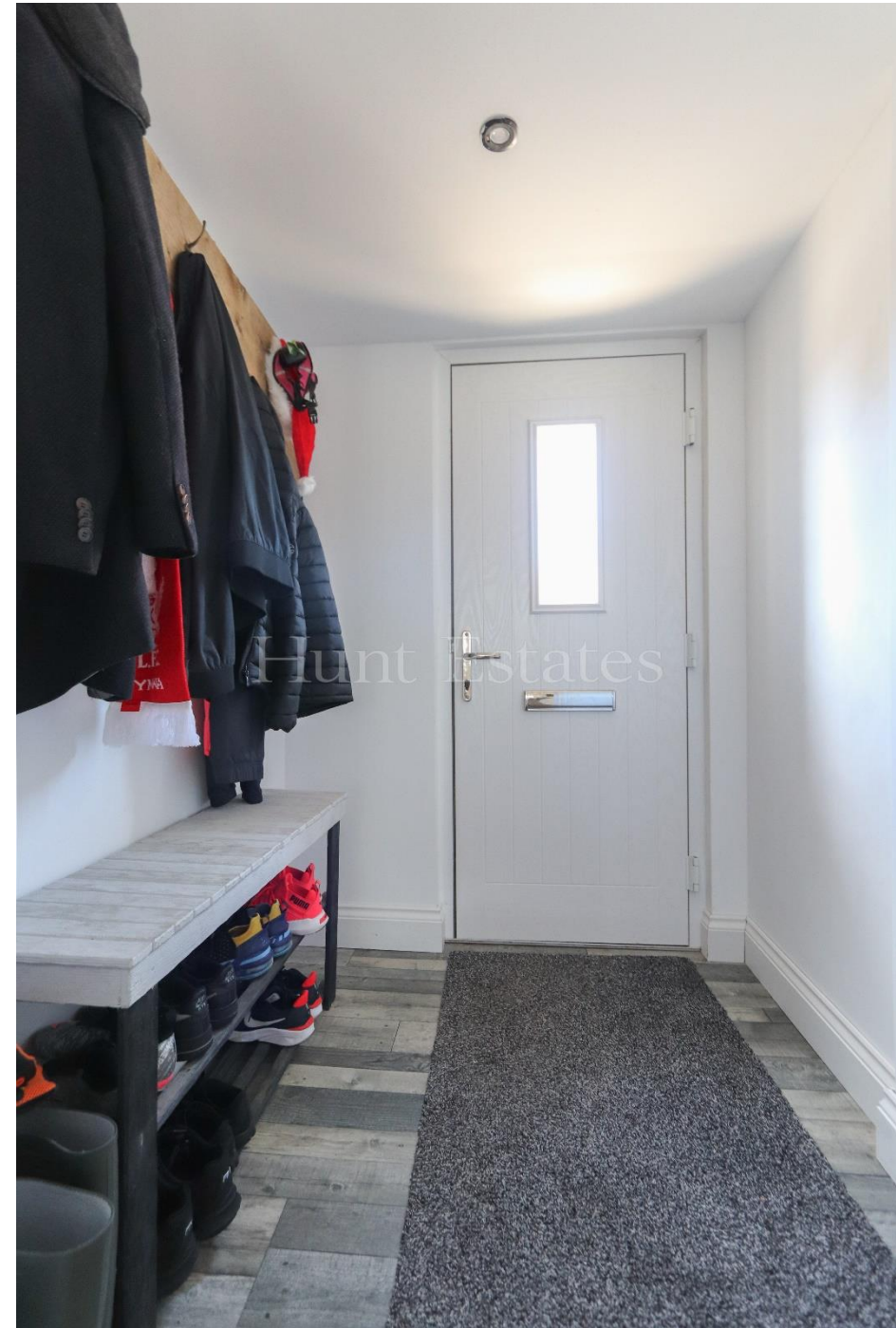
Outside, the home offers an enclosed rear garden with Astroturf and a patio that extends to the side, ensuring sunlight throughout the day. The exterior of the house has undergone recent insulation upgrades.

Furthermore, a gravel driveway offers parking space for 5/6 cars on the side of the property, with the option for additional parking in the front or the possibility to convert part of it back to lawn if preferred.



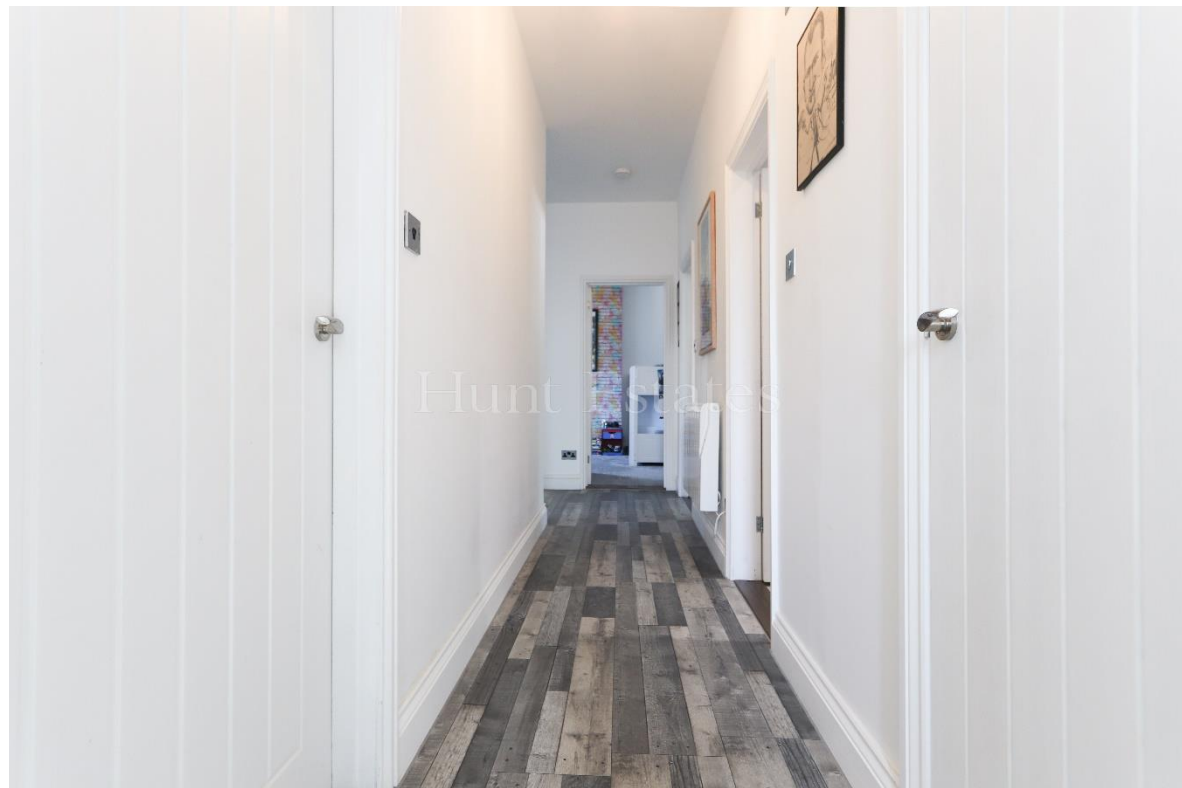
























FEATURES

- Three-bedroom bungalow
- Two bathrooms
- Completely renovated throughout
- Enclosed spacious garden
- Versatile sunroom
- Close to Waitrose, beach, and restaurant

INFORMATION

- Mains drains and water
- Electric heating
- Double glazed
- 5/6 parking
- Parish rates for 2023 were £421.12
- Freehold and Entitled/Licensed

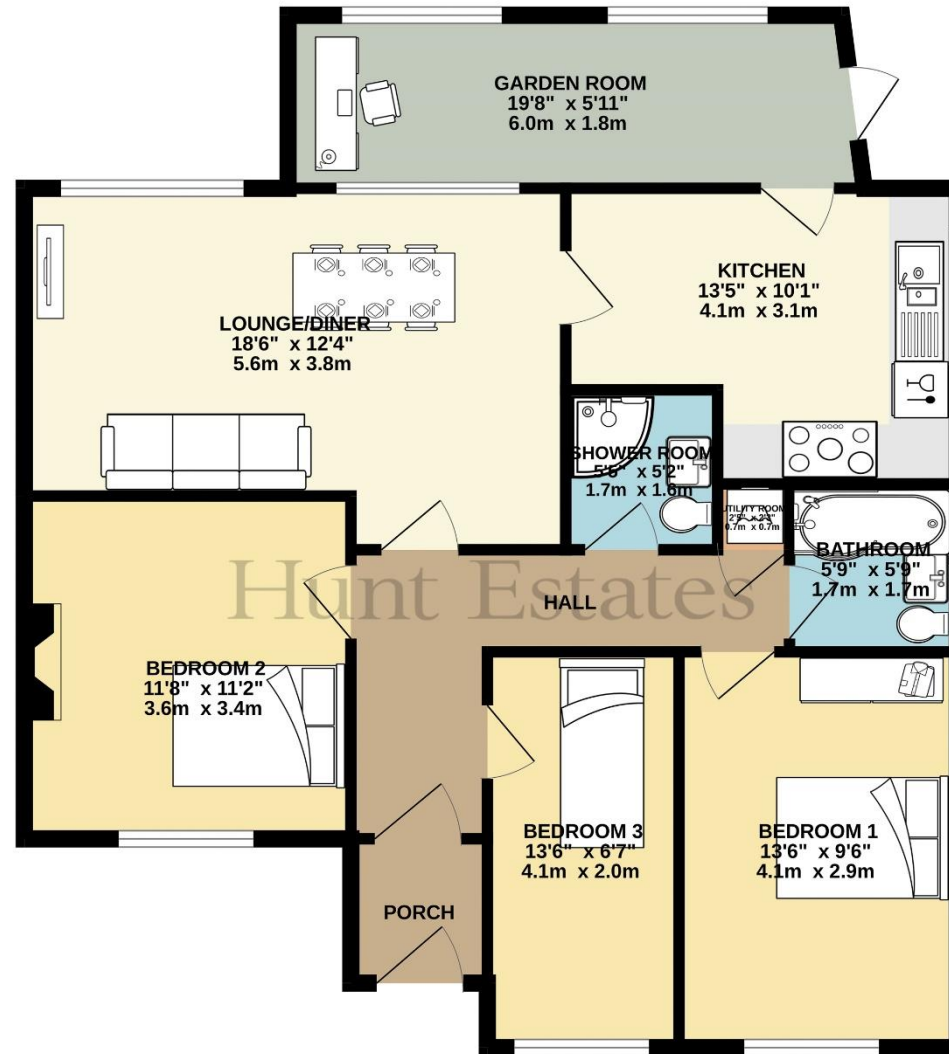


Sarah Gallichan
Property Negotiator

sarah@huntstates.com
T +44 (0)7700 713574
www.huntstates.com
9 New Street, St Helier,
Jersey, JE2 3RA

CHRISTIE'S | Hunt Estates
INTERNATIONAL REAL ESTATE

GROUND FLOOR
955 sq.ft. (88.7 sq.m.) approx.



SEMI DETACHED BUNGALOW

TOTAL FLOOR AREA : 955 sq.ft. (88.7 sq.m.) approx.

Whilst every attempt has been made to ensure the accuracy of the floorplan contained here, measurements of doors, windows, rooms and any other items are approximate and no responsibility is taken for any error, omission or mis-statement. This plan is for illustrative purposes only and should be used as such by any prospective purchaser. The services, systems and appliances shown have not been tested and no guarantee as to their operability or efficiency can be given.
Made with Metropix ©2024

Hunt Estates

9 New Street, St Helier, Jersey, JE2 3RA, Channel Islands | +44 1534 860650 | www.huntestates.com | enquiries@huntestates.com

Disclaimer: All information provided herein has been obtained from sources believed reliable, but may be subject to errors, omissions, change of price, prior sale, withdrawal without notice. Hunt Estates make no representation, warranty, or guarantee as to accuracy of any information contained herein. You should consult your advisors for an independent investigation of any properties. All viewings to be conducted through Hunt Estates.