



CHRISTIE'S | **Hunt Estates**
INTERNATIONAL REAL ESTATE

An Impressive Family Home With Extensive Grounds
Trinity, Jersey

AN IMPRESSIVE FAMILY HOME WITH EXTENSIVE GROUNDS, POOL, AND TENNIS COURT

This substantial and impressive nine-bedroom, five-bathroom, five reception family home stands in magnificent grounds that offer everything an active and busy family could wish for.

The main house with its fine traditional granite façade, comprises six bedrooms and four bathrooms, including a two-bedroom section perfect for older children needing some independence.

An adjoining three-bedroom cottage with one bathroom and a ground floor cloakroom, set on two floors and with its own gated driveway, would be perfect for guests.

The grounds of the main house are beautifully maintained and high hedged pathways lead to a secluded corner for every time of day. There is a delightful fragrant ornamental garden leading off the kitchen, a large level lawn area perfect for ball games or a summer marquee, an arboretum for exploring, a floodlit tennis court and a heated pool.

The property has been very well maintained by the current long-standing owners.





CHRISTIE'S
INTERNATIONAL REAL ESTATE
Estate



























THE COTTAGE







THE GROUNDS





FEATURES

- Flexible accommodation c. 5,500 sq. ft.
- Main house: 6 bed, 4 bath.
- Cottage: 3 beds, 1 bath & cloaks
- Floodlit tennis court
- Heated swimming pool
- Extensive grounds
- Electric vehicle charging point
- Featured in Rural Magazine Summer 2024 edition

INFORMATION

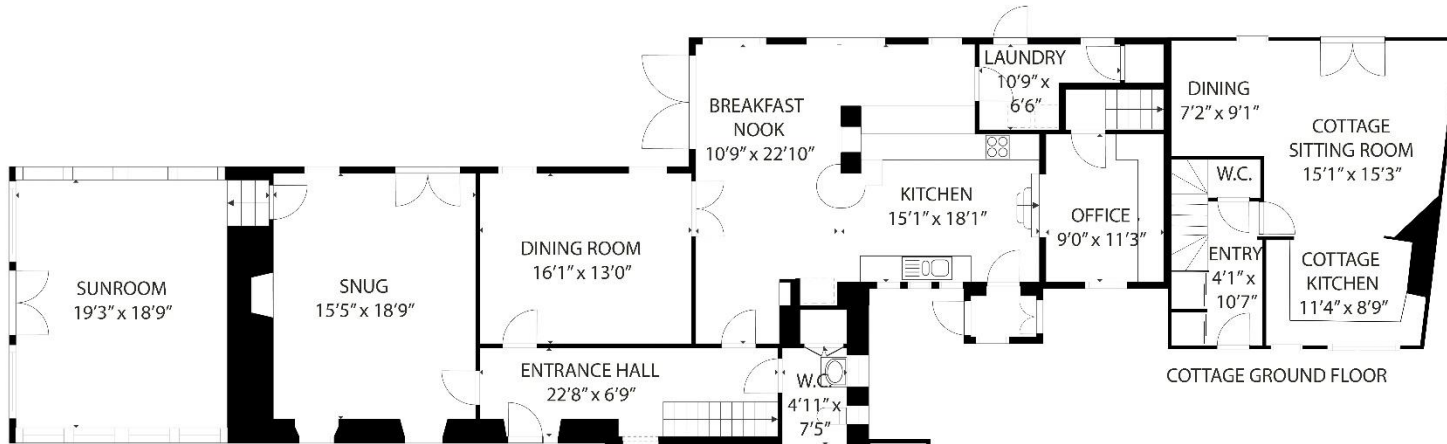
- Mains drains
- Bore hole water & well
- Mains water available in road
- Oil fired heating in main house
- Electric heating in cottage
- Grade 3 listed main house
- Cottage: "Qualified if let" housing status
- Double garage and parking for +10 cars
- Parish rates for 2023 were £1737.94
- Freehold and Entitled/Licensed



David Voak MNAEA
Property Negotiator

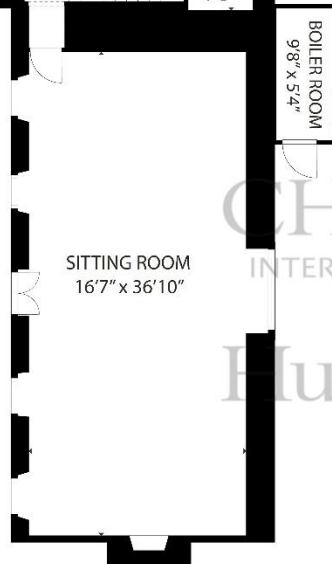
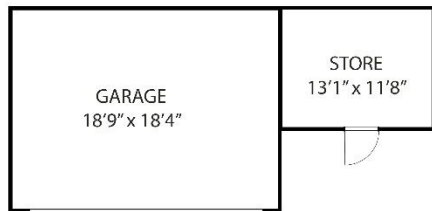
david@huntstates.com
T +44 (0)7797 725621
www.huntstates.com
9 New Street, St Helier,
Jersey, JE2 3RA

CHRISTIE'S | Hunt Estates
INTERNATIONAL REAL ESTATE

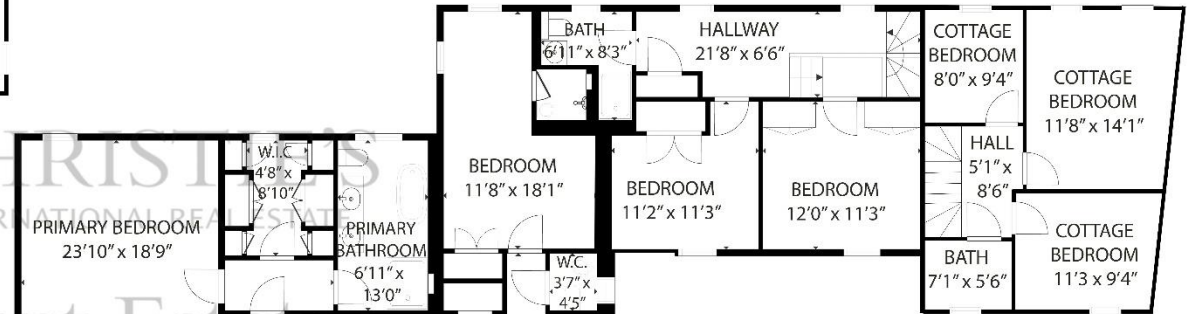


COTTAGE GROUND FLOOR

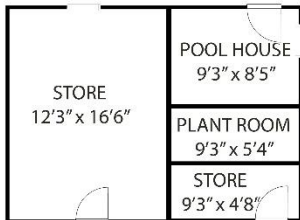
MAIN HOUSE GROUND FLOOR



MAIN HOUSE FIRST FLOOR



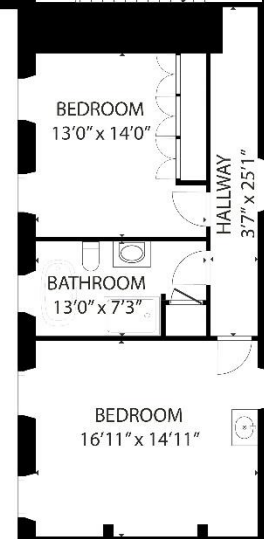
COTTAGE FIRST FLOOR



GROSS INTERNAL AREA
 MAIN HOUSE GROUND FLOOR: 2497 sq. ft, MAIN HOUSE FIRST FLOOR: 2109 sq. ft
 COTTAGE GROUND FLOOR: 437 sq. ft, COTTAGE FIRST FLOOR: 424 sq. ft
 TOTAL 5467 sq. ft

EXCLUDED AREAS: STORES: 393 sq. ft, GARAGE: 343 sq. ft
 POOL HOUSE: 77 sq. ft, PLANT ROOM: 49 sq. ft, BOILER ROOM: 51 sq. ft

SIZES AND DIMENSIONS ARE APPROXIMATE, ACTUAL MAY VARY



As the selected exclusive affiliate of Christie's International Real Estate in Jersey, Channel Islands, Hunt Estates combines local expertise with global reach via Christie's affiliation to the most famous real estate companies in the world.

An invitation-only affiliate network, Christie's International Real Estate selected Hunt Estates in 2020 to represent the famous Christie's brand in the sphere of luxury real estate in Jersey.

CHRISTIE'S | Hunt Estates

INTERNATIONAL REAL ESTATE

9 New Street, St Helier, Jersey, JE2 3RA, Channel Islands | +44 1534 860650 | www.huntestates.com | enquiries@huntestates.com

Disclaimer: All information provided herein has been obtained from sources believed reliable, but may be subject to errors, omissions, change of price, prior sale, withdrawal without notice. Hunt Estates make no representation, warranty, or guarantee as to accuracy of any information contained herein. You should consult your advisors for an independent investigation of any properties. All viewings to be conducted through Hunt Estates.