



Hunt Estates

Charming Two Bedroom Apartment
St. Saviour, Jersey

CHARMING TWO BEDROOM APARTMENT

A charming two-bedroom apartment on the first floor. It is in an immaculate condition with ample space.

Comprising; entrance hall, good-sized sitting room, well-equipped kitchen, separate dining room, two double bedrooms and a house bathroom.

There is good storage throughout and one allocated parking space plus shared visitor parking.

The vendors have refurbished this apartment to a very high standard including new flooring, and the apartment is in walk in condition.

Located in the parish of St. Saviour, not far from the town centre and close to beaches, amenities, and local schools.

The apartments are well maintained having a new roof, new drains, and exterior decoration in 2022.

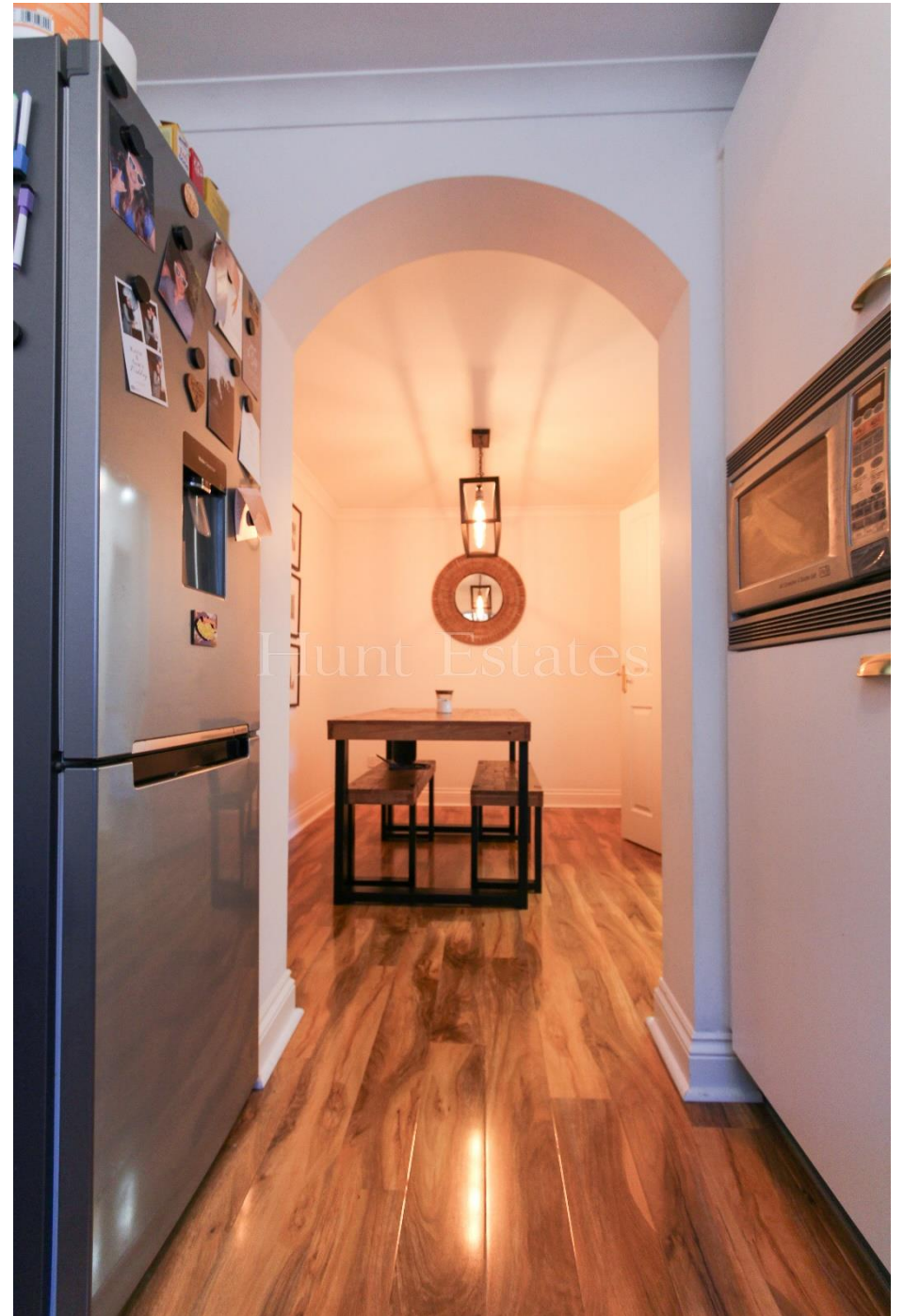
Highly recommended for viewings, chain free.





Hunt Estates













FEATURES

- First floor two-bedroom apartment
- Refurbished to a high standard throughout
- Two reception rooms
- Two double bedrooms
- New roof, drains and exterior decoration to apartments in 2022
- Close to beaches, amenities, and local schools

INFORMATION

- Mains drains and water
- Electric Heating
- Double glazed
- One allocated parking
- Shared visitor parking
- Service charge £372.28 per quarter
- Parish rates for 2023 £380.80
- Flying Freehold and Entitled/Licensed

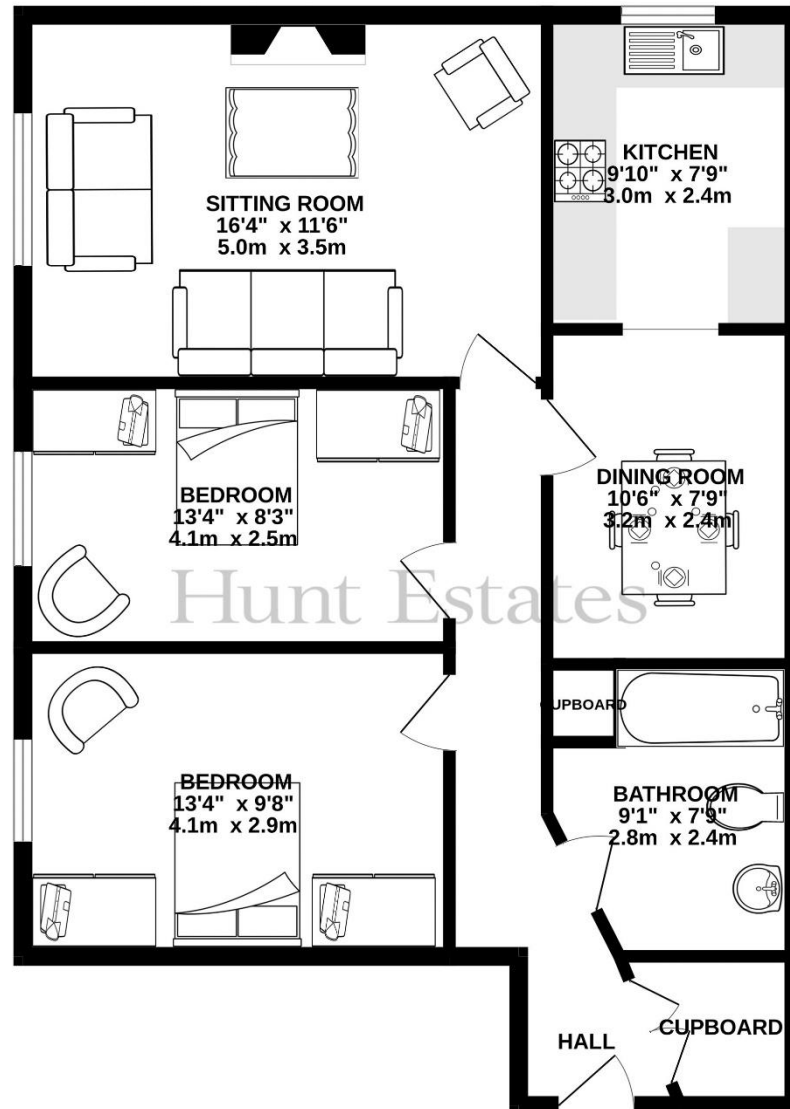


Gill Acton
Property Negotiator

gill.acton@huntstates.com
T +44 (0)7797 961649
www.huntstates.com
9 New Street, St Helier,
Jersey, JE2 3RA

CHRISTIE'S | **Hunt Estates**
INTERNATIONAL REAL ESTATE

GROUND FLOOR
743 sq.ft. (69.0 sq.m.) approx.



TOTAL FLOOR AREA : 743 sq.ft. (69.0 sq.m.) approx.

Whilst every attempt has been made to ensure the accuracy of the floorplan contained here, measurements of doors, windows, rooms and any other items are approximate and no responsibility is taken for any error, omission or mis-statement. This plan is for illustrative purposes only and should be used as such by any prospective purchaser. The services, systems and appliances shown have not been tested and no guarantee as to their operability or efficiency can be given.
Made with Metropix ©2024



Hunt Estates

9 New Street, St Helier, Jersey, JE2 3RA, Channel Islands | +44 1534 860650 | www.huntestates.com | enquiries@huntestates.com

Disclaimer: All information provided herein has been obtained from sources believed reliable, but may be subject to errors, omissions, change of price, prior sale, withdrawal without notice. Hunt Estates make no representation, warranty, or guarantee as to accuracy of any information contained herein. You should consult your advisors for an independent investigation of any properties. All viewings to be conducted through Hunt Estates.