



Hunt Estates

Family Home Near St Ouen's Village
St. Ouen, Jersey

FAMILY HOME NEAR ST OUEN'S VILLAGE

On the market for the first time in 40 years, this three-bedroom semi-detached property is situated on a development of similar houses in St. Ouen.

Ground floor comprising entrance porch, light and bright entrance hall, cloakroom, kitchen with access to the single garage, dining room with an arch leading through to the sitting room featuring a fireplace.

First floor comprising; large main bedroom with fitted wardrobes, a double bedroom, a smaller double bedroom, house bathroom and linen storage.

This property also benefits from a large attic, with potential to create a further bedroom and bathroom subject to the necessary planning consents.

Externally there is a large rear garden fitted with a chalet and fishpond.

To the front of the property there is an integral single garage and further parking for four cars. There is also potential to create another parking space (subject to planning permission).

Local amenities at St. Ouen's Village are just a short walk away, including a pharmacy, post office, supermarket, and children's play area.

Viewings highly recommended by vendors sole agent.









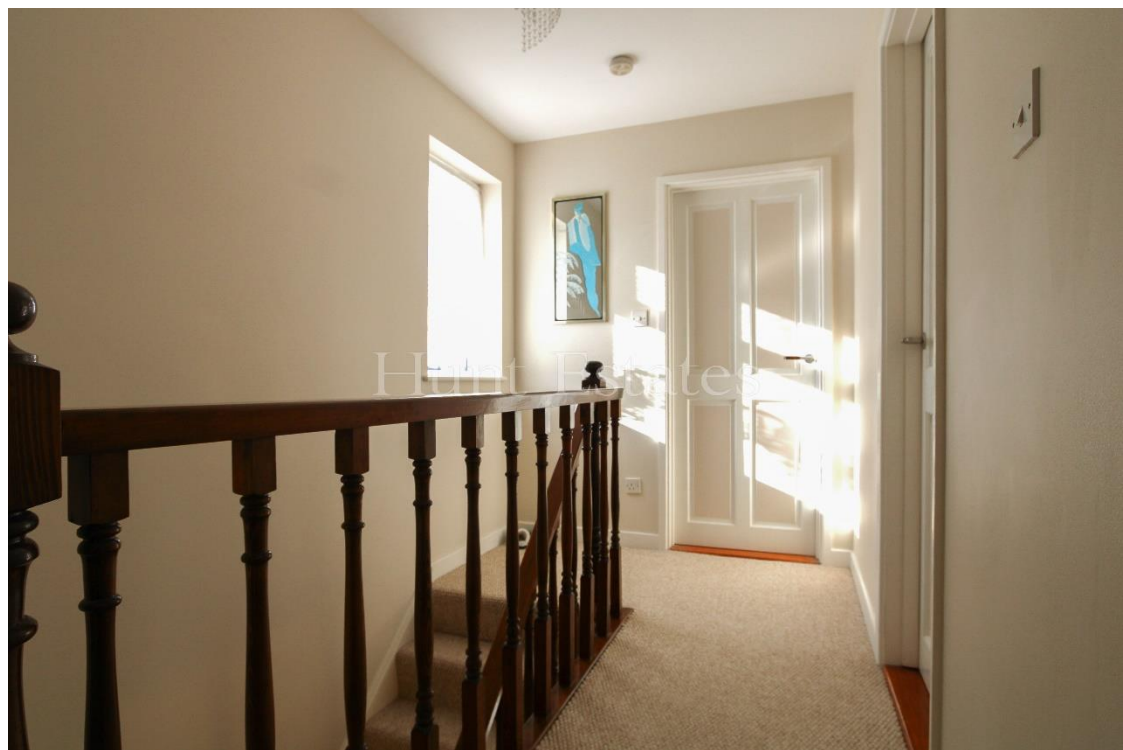






Hunt Estates











FEATURES

- Semi-detached family home
- Three double bedrooms
- House bathroom plus cloakroom
- Large rear garden with fish pond and chalet
- Short walk to St. Ouens village
- Close to local amenities

INFORMATION

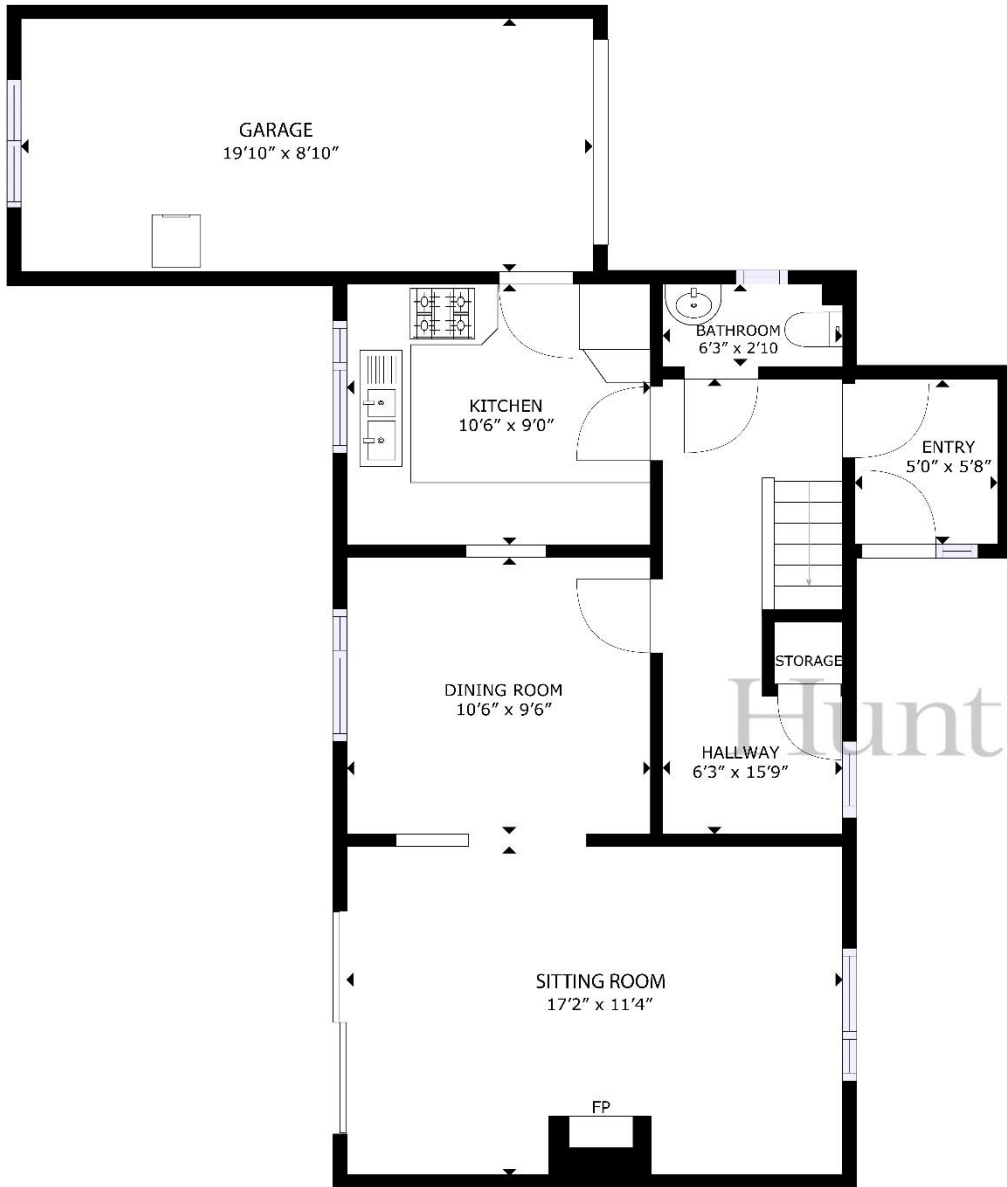
- Mains water and drains
- Oil fired central heating
- Bottled gas for hob
- Double glazed
- Parking for 4 cars and single garage
- Parish rates for 2023 were £472
- Freehold and Entitled/Licensed



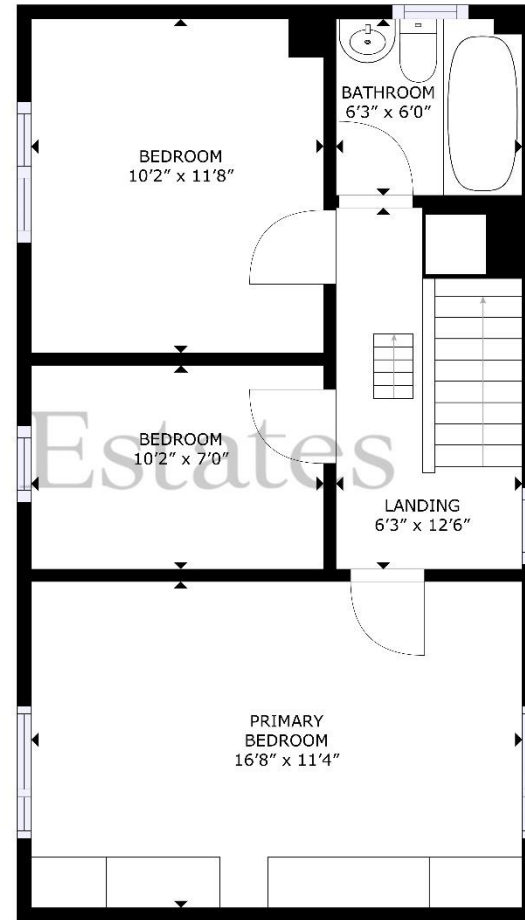
Sacha Butlin
Property Negotiator

sacha@huntstates.com
T +44 (0)7829 917449
www.huntstates.com
9 New Street, St Helier,
Jersey, JE2 3RA

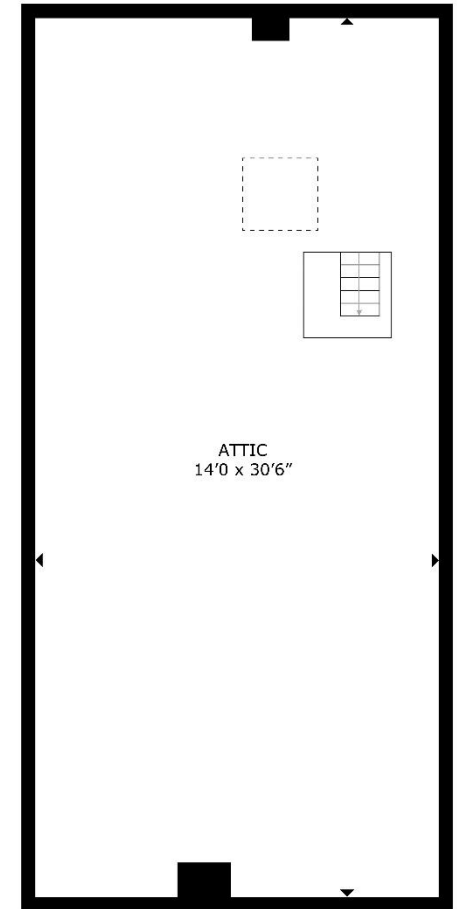
CHRISTIE'S | Hunt Estates
INTERNATIONAL REAL ESTATE



GROUND FLOOR



FIRST FLOOR



ATTIC

GROSS INTERNAL AREA
 FLOOR 1: 563 sq. ft, FLOOR 2: 526 sq. ft, ATTIC: 427 sq. ft
 TOTAL: 1516 sq. ft

EXCLUDED AREAS: GARAGE: 175 sq. ft

SIZES AND DIMENSIONS ARE APPROXIMATE, ACTUAL MAY VARY

Hunt Estates

9 New Street, St Helier, Jersey, JE2 3RA, Channel Islands | +44 1534 860650 | www.huntestates.com | enquiries@huntestates.com

Disclaimer: All information provided herein has been obtained from sources believed reliable, but may be subject to errors, omissions, change of price, prior sale, withdrawal without notice. Hunt Estates make no representation, warranty, or guarantee as to accuracy of any information contained herein. You should consult your advisors for an independent investigation of any properties. All viewings to be conducted through Hunt Estates.