



Hunt Estates

Attractive First Time Buyers Or Over 55s Home
St. Mary, Jersey

Attractive First Time Buyers Or Over 55s Home

A semi-detached dormer bungalow situated in the heart of St. Mary.

Internally this property consists of good-sized entrance hall, under stairs storage, sitting room with access out onto rear garden, kitchen overlooking the rear garden, a light and bright double bedroom and a house bathroom.

At the first floor there are two good sized double bedrooms, with eaves storage and a shower room.

Throughout this property there are also wider doorways to allow wheelchair access.

Externally this property benefits from a front and back garden and a large chalet fitted with electrics, communal pétanque pitch, two parking spaces and there are also numerous visitor spaces situated on the development.

Situated in a desirable parish this property is in walking distance of a small supermarket/petrol station, local eatery, parish primary school and community centre.

First time buyers or over 55s only.

Viewing highly recommended by the vendors sole agent.









Hunt Estates

















FEATURES

- Attractive dormer bungalow
- Three double bedrooms, two bathrooms
- Front and back garden
- First time buyers or over 55s only
- Wider doorways to allow wheelchair access
- Primary school nearby and local amenities

INFORMATION

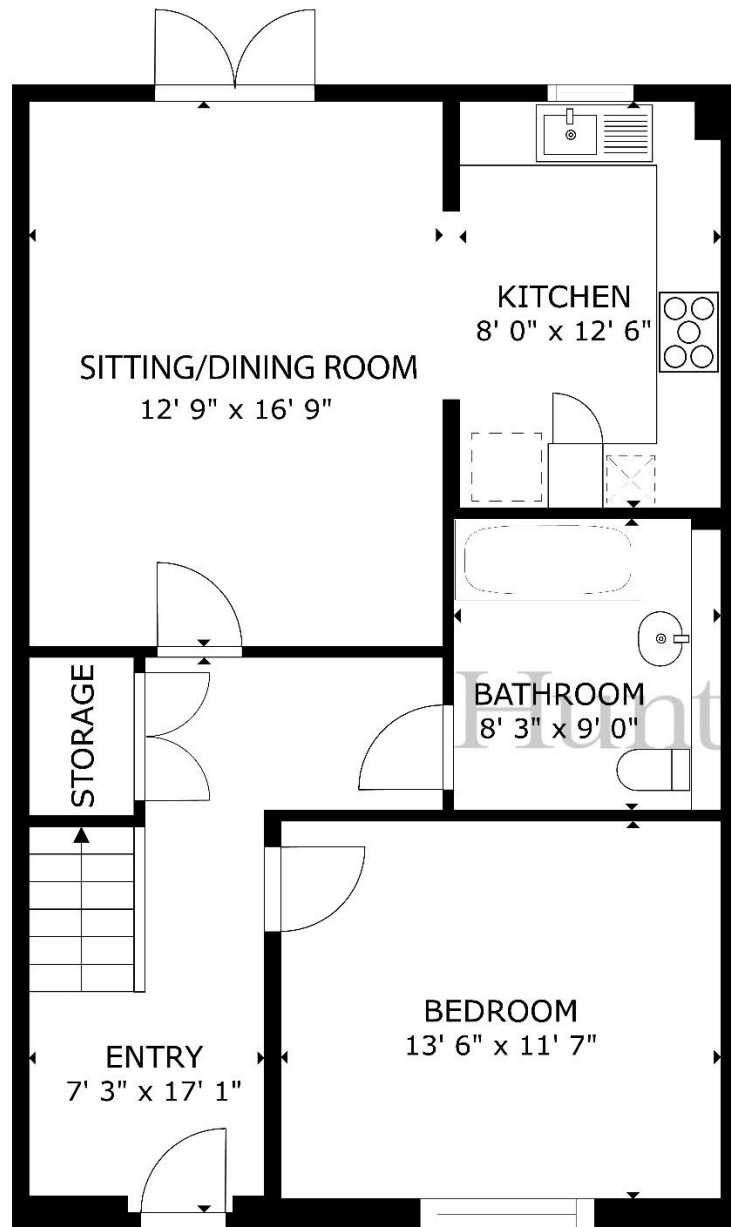
- Main drains and water
- Electric heating
- Double glazing
- Two parking spaces
- Ample visitor parking
- Quarterly service charge for communal areas £64.40
- Parish rates for 2023 were £501.60
- Freehold and Entitled/Licensed



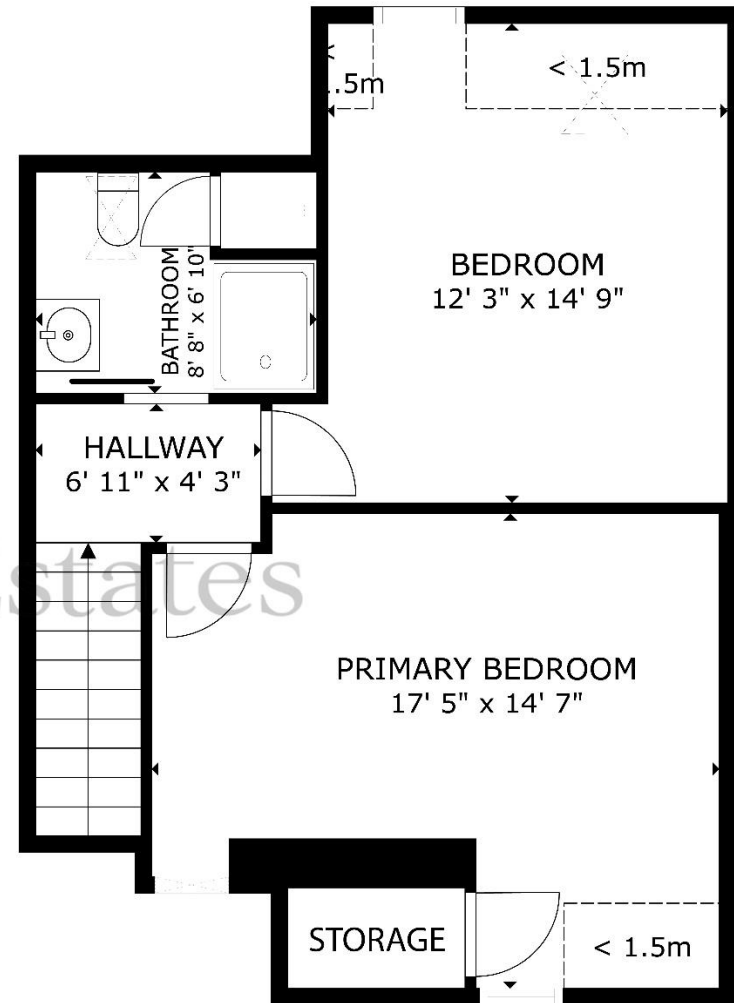
Sacha Butlin
Property Negotiator

sacha@huntstates.com
T +44 (0)7829 917449
www.huntstates.com
9 New Street, St Helier,
Jersey, JE2 3RA

CHRISTIE'S | **Hunt Estates**
INTERNATIONAL REAL ESTATE



GROUND FLOOR



FIRST FLOOR

GROUND FLOOR: 720 sq. ft, FIRST FLOOR: 518 sq. ft
 TOTAL: 1238 sq. ft

EXCLUDED AREAS: REDUCED HEADROOM BELOW 1.5M: 37 sq. ft

SIZES AND DIMENSIONS ARE APPROXIMATE ACTUAL MAY VARY

Hunt Estates

9 New Street, St Helier, Jersey, JE2 3RA, Channel Islands | +44 1534 860650 | www.huntestates.com | enquiries@huntestates.com

Disclaimer: All information provided herein has been obtained from sources believed reliable, but may be subject to errors, omissions, change of price, prior sale, withdrawal without notice. Hunt Estates make no representation, warranty, or guarantee as to accuracy of any information contained herein. You should consult your advisors for an independent investigation of any properties. All viewings to be conducted through Hunt Estates.