



Hunt Estates

Brand New Horizon West Apartment  
St. Helier, Jersey

## BRAND NEW HORIZON WEST APARTMENT

A brand new two-bedroom, two-bathroom apartment in the West block of the new Horizon development.

The apartment is situated on the 6th floor and has been finished in line with the silver specification. It boasts wonderful harbour views and a balcony which opens up from the sitting room and one of the bedrooms.

Comprising; open plan modern kitchen/sitting area with floor to ceiling windows allowing lots of light to flood through the apartment. There are two double bedrooms, both with fitted wardrobes one is an en suite shower room, a house bathroom and a utility cupboard with space and plumbed for a washer/dryer.

The apartment benefits from an undercover parking space.

The lovely marina and sea views, the close proximity to St. Helier town centre, and with all the facilities at the Waterfront on hand, makes this an ideal location for living and working in St. Helier.

















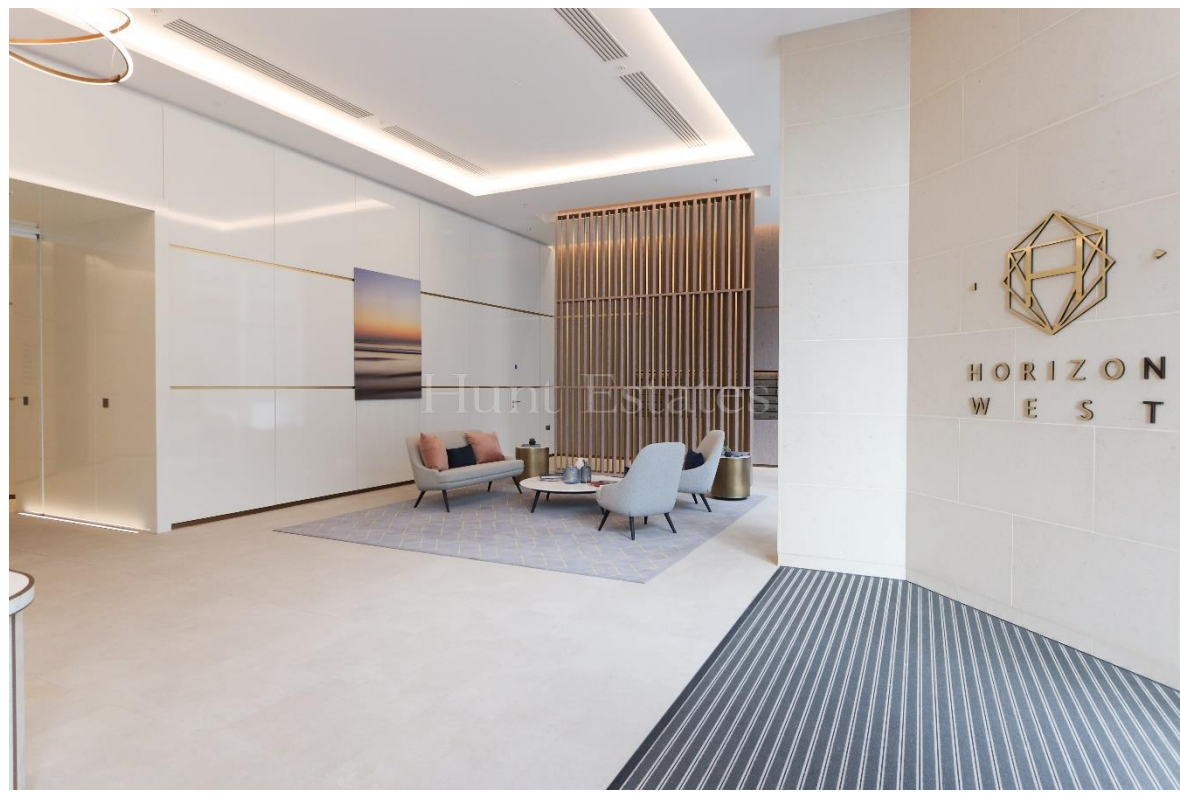


## FEATURES

- Horizon 6<sup>th</sup> floor apartment
- Two-bedroom, two bathroom
- Light and bright throughout
- Balcony with marina views
- Utility cupboard with washer/dryer
- Close to St. Helier town centre

## INFORMATION

- Mains drains, mains water
- Electric heating
- Triple glazed
- Under cover parking for one car
- Concierge service and CCTV
- Available immediately to Entitled/Licensed residents
- Please note that the equivalent of 1 months' rent is required for the deposit



Sacha Butlin  
Property Negotiator

sacha@huntstates.com  
T +44 (0)7829 917449  
www.huntstates.com  
9 New Street, St Helier,  
Jersey, JE2 3RA

CHRISTIE'S | Hunt Estates  
INTERNATIONAL REAL ESTATE

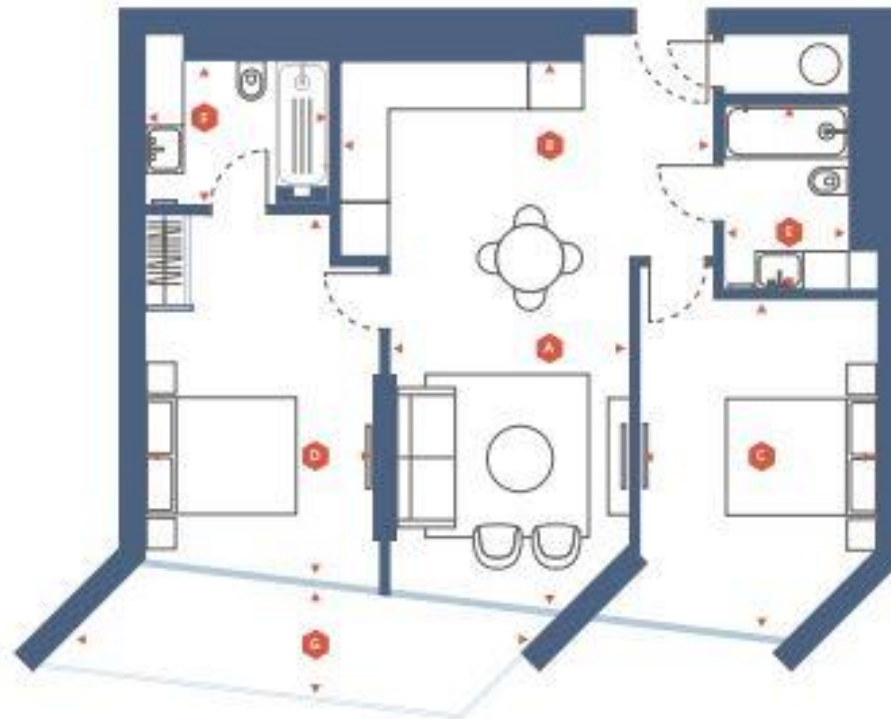
▼ Apartment numbers

W210 | W410 | W610  
SECOND | FOURTH | SIXTH

▼ Type

17 A

▲ Floor



▼ Gross Internal Area

68.5 m<sup>2</sup> / 737.0 ft<sup>2</sup>

▼ External Dimensions

8.0 m<sup>2</sup> / 86.4 ft<sup>2</sup>

▼ Approximate Room Dimensions

A	- W: 1.0m / 9.8ft	X L: 7.1m / 23.3ft
B	- W: 4.8m / 15.7ft	X L: 7.1m / 23.3ft
C	- W: 1.0m / 9.8ft	X L: 1.7m / 5.6ft
D	- W: 2.9m / 9.5ft	X L: 3.2m / 10.5ft
E	- W: 1.2m / 3.9ft	X L: 3.4m / 11.2ft
F	- W: 2.3m / 7.5ft	X L: 3.8m / 12.5ft
G	- W: 3.4m / 11.2ft	X L: 3.8m / 12.5ft

▼ Locust



IZO

# Hunt Estates

9 New Street, St Helier, Jersey, JE2 3RA, Channel Islands | +44 1534 860650 | [www.huntestates.com](http://www.huntestates.com) | [enquiries@huntestates.com](mailto:enquiries@huntestates.com)

Disclaimer: All information provided herein has been obtained from sources believed reliable, but may be subject to errors, omissions, change of price, prior sale, withdrawal without notice. Christie's Hunt Estates make no representation, warranty, or guarantee as to accuracy of any information contained herein. You should consult your advisors for an independent investigation of any properties. All viewings to be conducted through Christie's Hunt Estates.