



Hunt Estates

Family Home Situated In A Desirable Parish  
St. Brelade, Jersey

## FAMILY HOME SITUATED IN A DESIRABLE PARISH

This semi-detached family home is situated in a quiet development of similar properties, occupying a corner plot. With local amenities nearby such as a tea rooms, supermarkets, golf course, Les creux park, parish primary school along with beautiful scenic walks right on your doorstep for the whole family to enjoy.

Internally this property has a eat-in kitchen, leading through to a conservatory which overlooks your own garden, large sitting room with doors also out onto the garden and cloakroom

On the first floor this property benefits from a spacious primary en suite, two further double bedrooms both with fitted wardrobes, a single bedroom with fitted wardrobes, house bathroom and large linen storage.

Externally the property comes with a single garage with plumbing for washing facilities, carport, and further parking. There is also 6 visitor spaces shared between houses 4-9.

This property also has a good-sized garden with a storage shed.



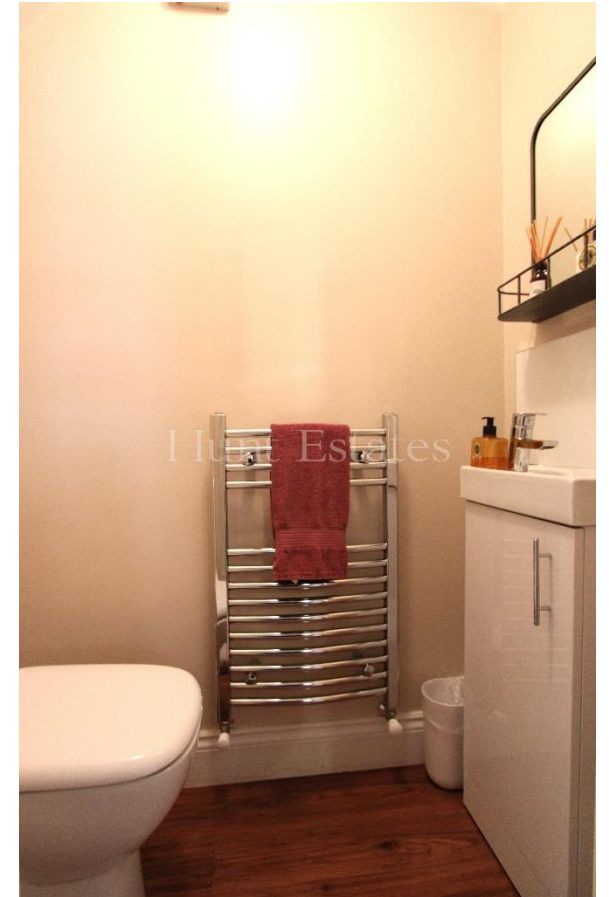
























## FEATURES

- Small development of similar properties
- Three double bedrooms one single
- Primary en suite and house bathroom
- Eat-in kitchen and good-sized sitting room
- Conservatory overlooking your garden
- Local amenities nearby

## INFORMATION

- Main drains and water
- Electric heating
- Double glazed
- Parking for two cars plus single garage
- 6 visitor spaces, shared between house 4-9
- Parish rates for 2023 were £591.30
- Freehold and Entitled/Licensed

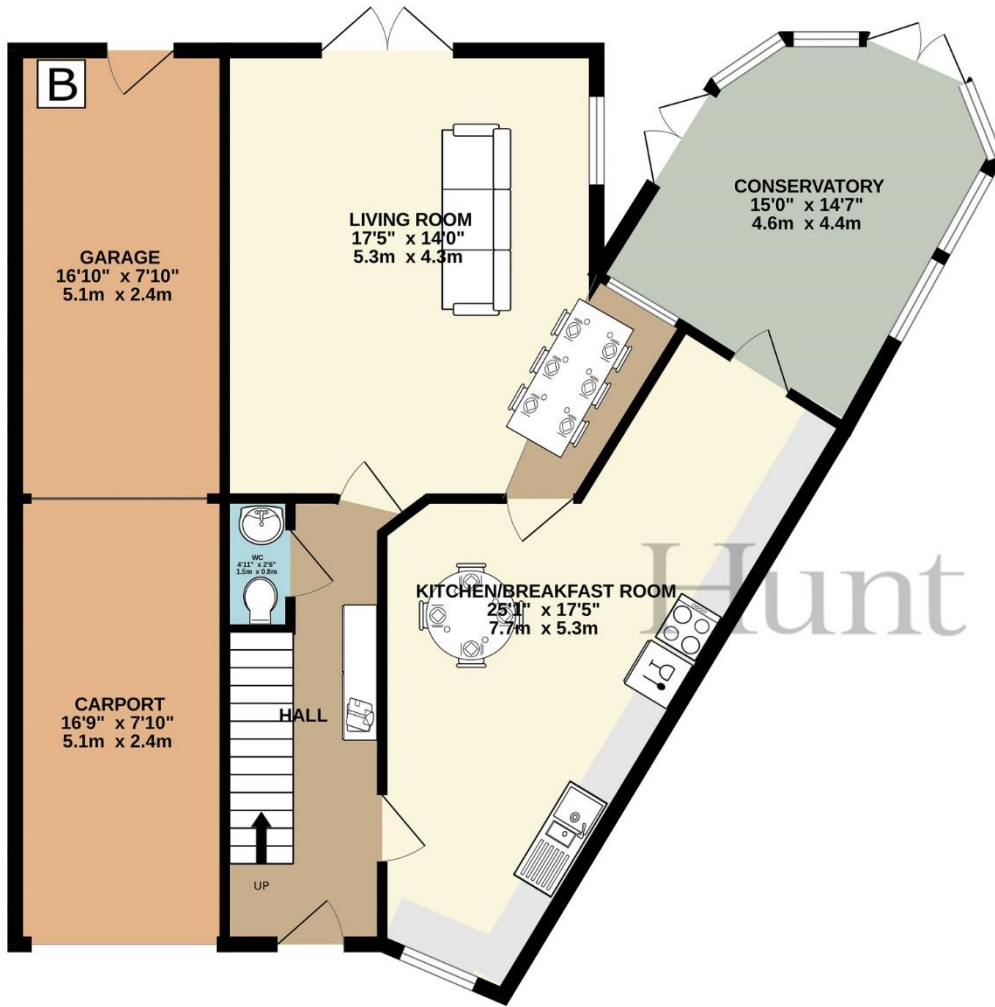


Sacha Butlin  
Property Negotiator

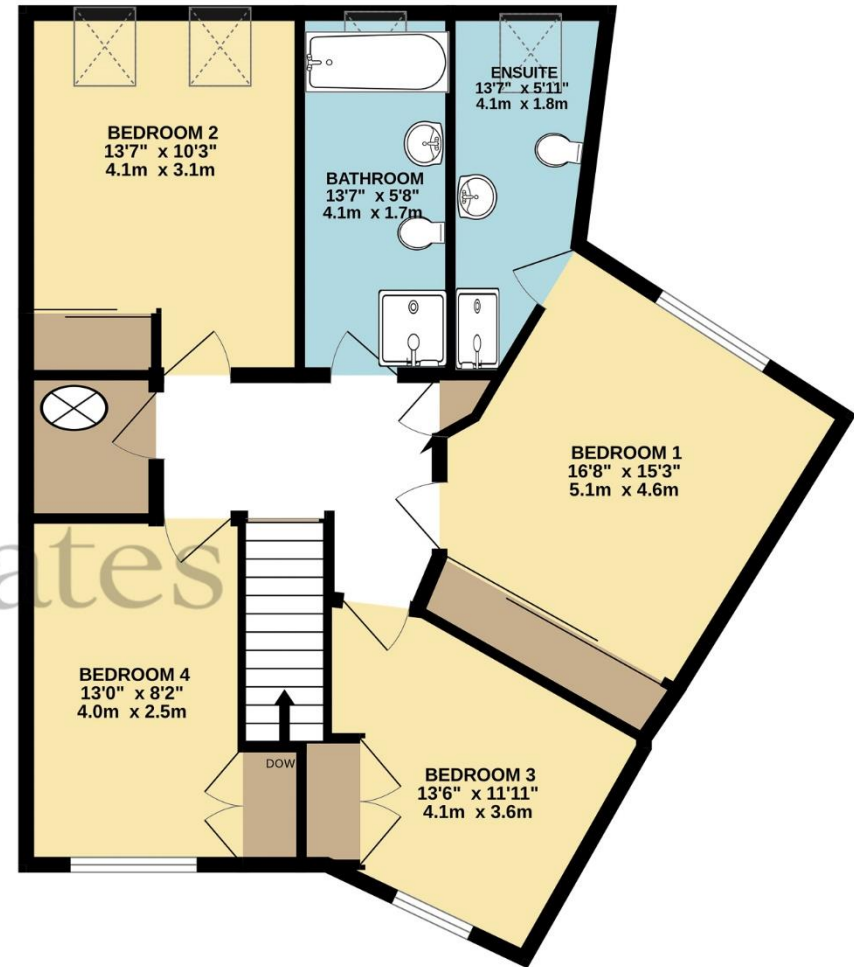
sacha@huntstates.com  
T +44 (0)7829 917449  
www.huntstates.com  
9 New Street, St Helier,  
Jersey, JE2 3RA

**CHRISTIE'S** | Hunt Estates  
INTERNATIONAL REAL ESTATE

GROUND FLOOR  
964 sq.ft. (89.5 sq.m.) approx.



1ST FLOOR  
728 sq.ft. (67.7 sq.m.) approx.



SEMI DETACHED HOUSE

TOTAL FLOOR AREA : 1692 sq.ft. (157.2 sq.m.) approx.

Whilst every attempt has been made to ensure the accuracy of the floorplan contained here, measurements of doors, windows, rooms and any other items are approximate and no responsibility is taken for any error, omission or mis-statement. This plan is for illustrative purposes only and should be used as such by any prospective purchaser. The services, systems and appliances shown have not been tested and no guarantee as to their operability or efficiency can be given.

Made with Metropix ©2024



# Hunt Estates

9 New Street, St Helier, Jersey, JE2 3RA, Channel Islands | +44 1534 860650 | [www.huntestates.com](http://www.huntestates.com) | [enquiries@huntestates.com](mailto:enquiries@huntestates.com)

Disclaimer: All information provided herein has been obtained from sources believed reliable, but may be subject to errors, omissions, change of price, prior sale, withdrawal without notice. Hunt Estates make no representation, warranty, or guarantee as to accuracy of any information contained herein. You should consult your advisors for an independent investigation of any properties. All viewings to be conducted through Hunt Estates.