



Hunt Estates

Three Bedroom Link Detached Home  
St. Peter, Jersey

### THREE BEDROOM LINK DETACHED HOME

This property in the heart of St. Peters village presents a wonderful opportunity for a family looking for a spacious and immaculate home.

Situated on a corner plot in St. Peters village, the property enjoys a convenient and desirable location.

The property has undergone a complete refurbishment, ensuring it is in excellent condition throughout. New windows, doors, kitchen, and other improvements enhance its appeal and functionality.

The ground floor features a bright, spacious sitting/dining room, providing ample space for family activities and entertaining guests. Although the kitchen is brand new, it offers potential for extension, allowing for the creation of a fabulous kitchen/dining room, subject to obtaining planning necessary consents. This presents an opportunity to tailor the space to suit specific needs and preferences. There is also a cloakroom at ground floor level.

The first floor comprises three bedrooms and a generous house bathroom, offering comfortable accommodation for a family.

Externally the property benefits from a low-maintenance garden to the rear, a single garage and parking for 5 plus cars to the front.

Overall, this property combines modern features, spacious living areas, and a convenient location, making it an ideal family home ready for immediate occupancy.



















## FEATURES

- No onward chain
- Three bedrooms, one bathroom
- Link detached property
- Brand new kitchen
- Scope to extend subject to planning permission
- Low maintenance rear garden
- Located in the heart of St Peter's village

## INFORMATION

- Mains water and drains
- Oil fired central heating
- Double glazed
- Single garage and parking for 5 cars
- Parish rates for 2023 were £466
- Freehold and Entitled



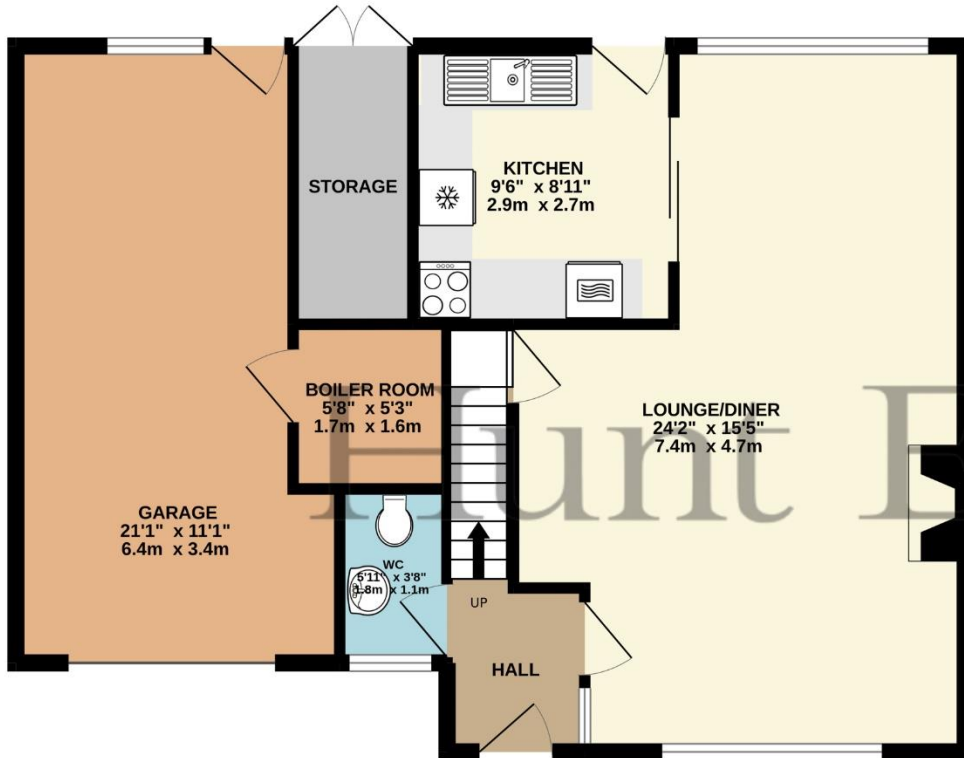
Sarah Gallichan  
Property Negotiator

sarah@huntestates.com  
T +44 (0)7700 713574  
www.huntestates.com  
9 New Street, St Helier,  
Jersey, JE2 3RA

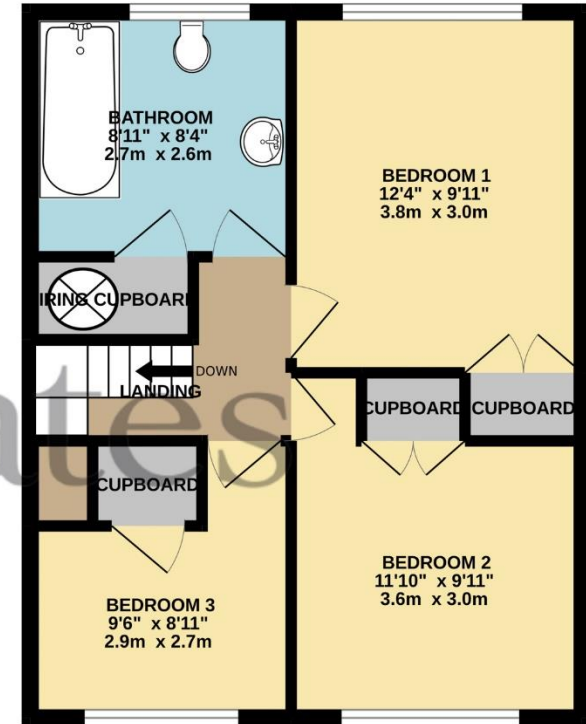
**CHRISTIE'S** | Hunt Estates  
INTERNATIONAL REAL ESTATE



GROUND FLOOR  
732 sq.ft. (68.0 sq.m.) approx.



1ST FLOOR  
456 sq.ft. (42.4 sq.m.) approx.



3 BED HOUSE

TOTAL FLOOR AREA : 1188 sq.ft. (110.4 sq.m.) approx.

Whilst every attempt has been made to ensure the accuracy of the floorplan contained here, measurements of doors, windows, rooms and any other items are approximate and no responsibility is taken for any error, omission or mis-statement. This plan is for illustrative purposes only and should be used as such by any prospective purchaser. The services, systems and appliances shown have not been tested and no guarantee as to their operability or efficiency can be given.

Made with Metropix ©2022



# Hunt Estates

9 New Street, St Helier, Jersey, JE2 3RA, Channel Islands | +44 1534 860650 | [www.huntestates.com](http://www.huntestates.com) | [enquiries@huntestates.com](mailto:enquiries@huntestates.com)

Disclaimer: All information provided herein has been obtained from sources believed reliable, but may be subject to errors, omissions, change of price, prior sale, withdrawal without notice. Hunt Estates make no representation, warranty, or guarantee as to accuracy of any information contained herein. You should consult your advisors for an independent investigation of any properties. All viewings to be conducted through Hunt Estates.