



Hunt Estates

Newly Renovated Duplex Apartment
St. Helier, Jersey

NEWLY RENOVATED DUPLEX APARTMENT

A Landmark Victorian building with attractive façade, retaining many original features. A most desirable duplex apartment (approx. 1150 sq. ft internally) situated on the outskirts of town.

The whole building has undergone major sympathetic refurbishment including a new roof, full rewire, new carpets, decorated throughout, a new kitchen, bathroom.

Lower floors comprise; entrance hall, office/bedroom 3, open plan sitting room/diner with feature fireplace and fully integrated kitchen with electric oven, ceramic hob, integrated dishwasher and washing machine. There is also a double bedroom and house bathroom situated on this floor.

Upper floor comprises; main bedroom suite and a room which could be used as an office or walk in wardrobe.

The apartment comes with the use of two allocated parking spaces.

Located on the outskirts of town, only a ten-minute walk to the town centre, parks, and beach.

PRIVATE FUNDING FOR 2 YEARS AT 5% COULD BE AVAILABLE.

















FEATURES

- Two/three-bedroom duplex apartment
- Renovated throughout
- Modern open plan sitting room/diner/kitchen
- Landmark building retaining many original features
- Short walk to the town centre, parks, and the beach

INFORMATION

- Mains water and drains
- New Rointe wall mounted electric heaters which can be remote controlled from mobile phone app
- Original single glazed sash windows
- Character grade 2 listed building
- Building has undergone a major refurbishment
- Wired for Sky Q
- Two allocated parking spaces
- Service charge will be minimal (to cover building insurance, parish rates, communal electricity, and cleaning)
- Pets by negotiation
- Flying Freehold and Entitled/Licensed

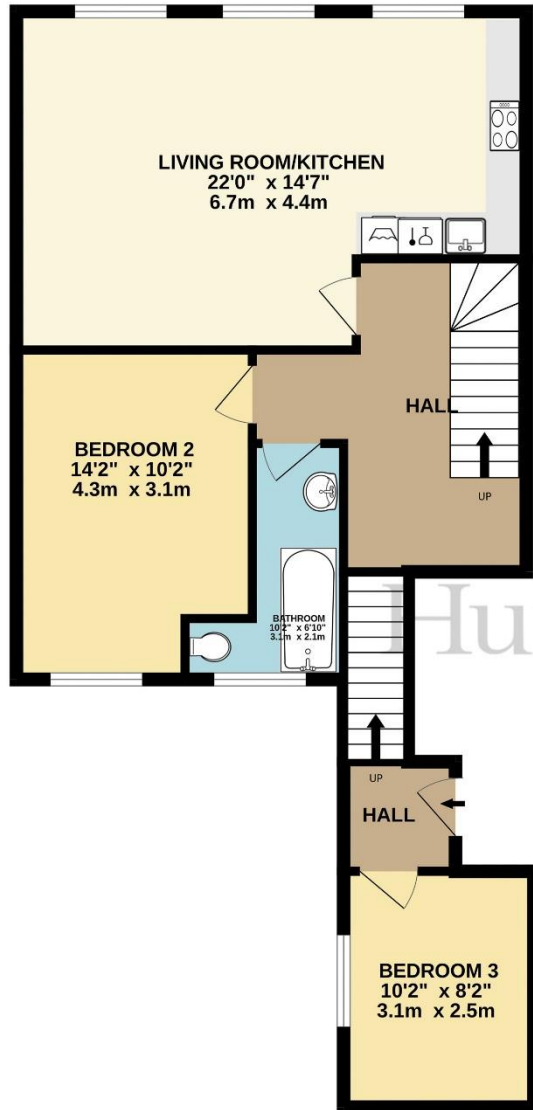


Gill Hunt, FNAEA
Director

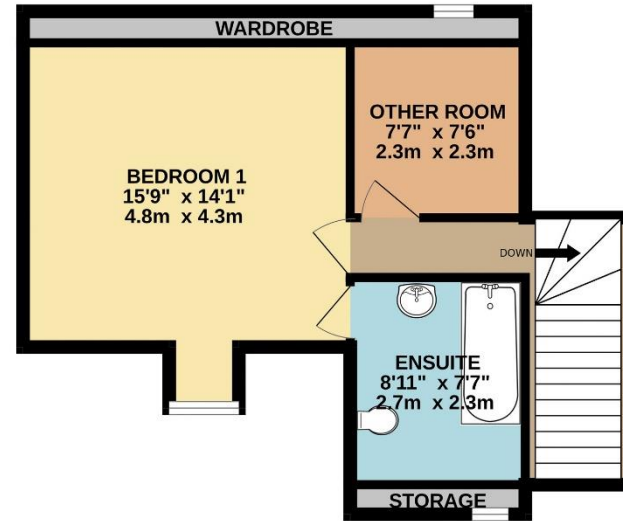
gill@huntestates.com
T +44 (0)7797 721881
www.huntestates.com
9 New Street, St Helier,
Jersey, JE2 3RA

CHRISTIE'S | Hunt Estates
INTERNATIONAL REAL ESTATE

SECOND FLOOR
726 sq.ft. (67.4 sq.m.) approx.



3RD FLOOR
429 sq.ft. (39.9 sq.m.) approx.



Hunt Estates

3 BED MEZZANINE APART

TOTAL FLOOR AREA : 1155 sq.ft. (107.3 sq.m.) approx.

Whilst every attempt has been made to ensure the accuracy of the floorplan contained here, measurements of doors, windows, rooms and any other items are approximate and no responsibility is taken for any error, omission or mis-statement. This plan is for illustrative purposes only and should be used as such by any prospective purchaser. The services, systems and appliances shown have not been tested and no guarantee as to their operability or efficiency can be given.
Made with Metropix ©2023



Hunt Estates

9 New Street, St Helier, Jersey, JE2 3RA, Channel Islands | +44 1534 860650 | www.huntestates.com | enquiries@huntestates.com

Disclaimer: All information provided herein has been obtained from sources believed reliable, but may be subject to errors, omissions, change of price, prior sale, withdrawal without notice. Hunt Estates make no representation, warranty, or guarantee as to accuracy of any information contained herein. You should consult your advisors for an independent investigation of any properties. All viewings to be conducted through Hunt Estates.