



Hunt Estates

Fully Renovated Apartment with Parking  
St. Helier, Jersey

## FULLY RENOVATED APARTMENT WITH PARKING

A Landmark Victorian building with attractive façade, retaining many original features. A most desirable apartment (approx. 629 sq. ft internally) situated on the outskirts of town. The whole building has undergone major sympathetic refurbishment including a new roof, full rewire, new carpets, decorated throughout, a new kitchen, bathroom.

Comprising; entrance hall, sitting/dining room with feature fireplace, separate, fully integrated kitchen with electric oven, ceramic hob, integrated freeze/freezer, dishwasher and washing machine. Double bedroom and house bathroom.

There is also a non-qualified letting unit with an en-suite shower room and its own access on a lower landing. This could also be used as part of the main apartment as a single bedroom or office.

The apartment comes with the use of one allocated parking space.

Located on the outskirts of town, only a ten-minute walk to the town centre, parks, and beach.

PRIVATE FUNDING FOR 2 YEARS AT 5% COULD BE AVAILABLE.









## FEATURES

- Large first floor apartment
- Separate non-qualified letting unit/second bedroom/office
- Renovated throughout
- Modern separate fully integrated kitchen
- Landmark building retaining many original features
- Short walk to town centre, parks, and the beach

## INFORMATION

- Mains water and drains
- New Rointe wall mounted electric heaters which can be remote controlled from mobile phone app
- Original single glazed sash windows
- Character grade 2 listed building
- Building has undergone a major refurbishment
- Wired for Sky Q
- One allocated parking space
- Service charge will be minimal (to cover building insurance, parish rates, communal electricity, and cleaning)
- Regret no pets
- Flying Freehold and Entitled/Licensed



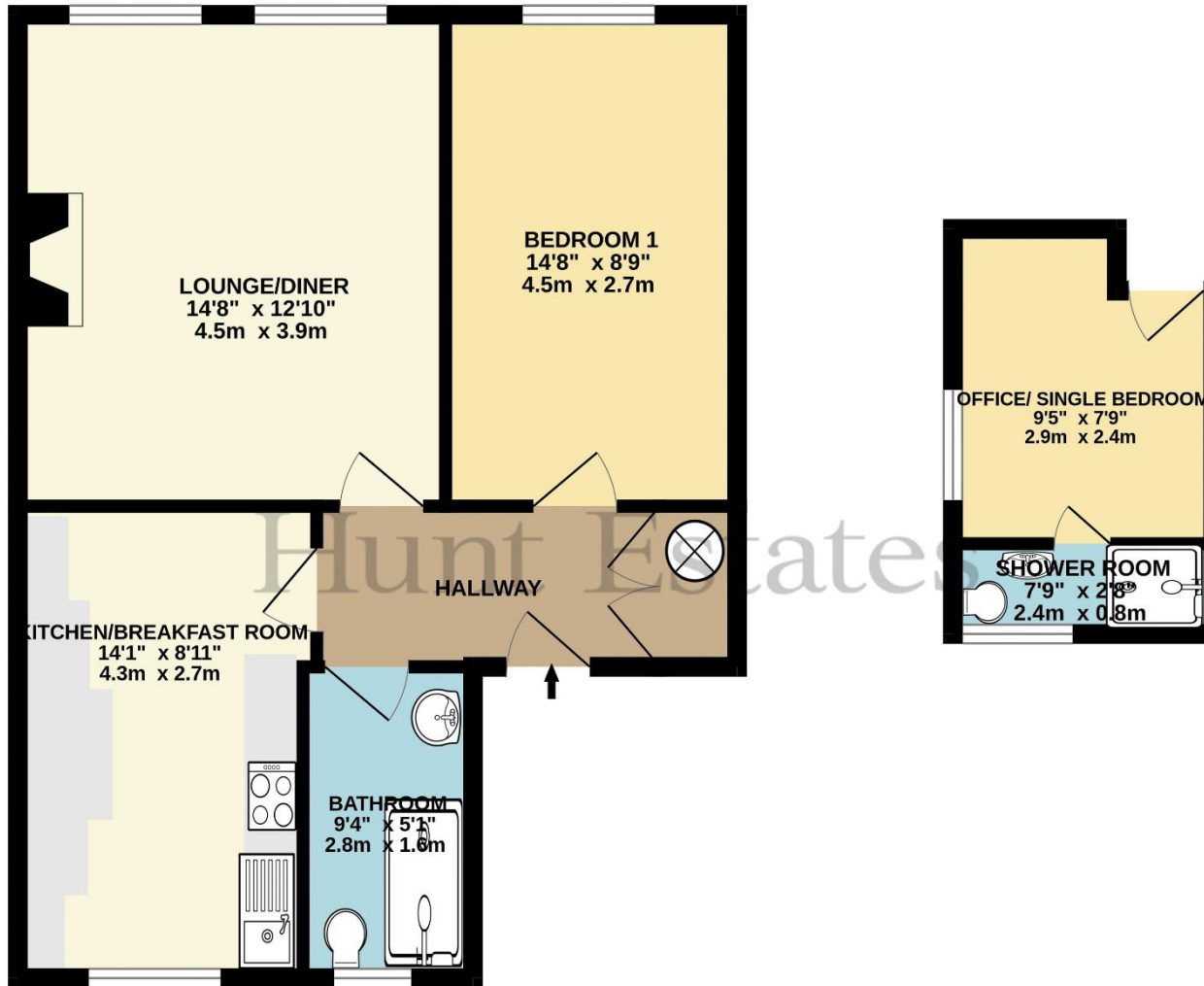
Gill Hunt, FNAEA  
Director

[gill@huntstates.com](mailto:gill@huntstates.com)  
T +44 (0)7797 721881  
[www.huntstates.com](http://www.huntstates.com)  
9 New Street, St Helier,  
Jersey, JE2 3RA

CHRISTIE'S | Hunt Estates  
INTERNATIONAL REAL ESTATE



GROUND FLOOR  
629 sq.ft. (58.4 sq.m.) approx.



1ST FL APARTMENT

TOTAL FLOOR AREA : 629 sq.ft. (58.4 sq.m.) approx.

Whilst every attempt has been made to ensure the accuracy of the floorplan contained here, measurements of doors, windows, rooms and any other items are approximate and no responsibility is taken for any error, omission or mis-statement. This plan is for illustrative purposes only and should be used as such by any prospective purchaser. The services, systems and appliances shown have not been tested and no guarantee as to their operability or efficiency can be given.  
Made with Metropix ©2023



# Hunt Estates

9 New Street, St Helier, Jersey, JE2 3RA, Channel Islands | +44 1534 860650 | [www.huntestates.com](http://www.huntestates.com) | [enquiries@huntestates.com](mailto:enquiries@huntestates.com)

Disclaimer: All information provided herein has been obtained from sources believed reliable, but may be subject to errors, omissions, change of price, prior sale, withdrawal without notice. Hunt Estates make no representation, warranty, or guarantee as to accuracy of any information contained herein. You should consult your advisors for an independent investigation of any properties. All viewings to be conducted through Hunt Estates.