



## ELEGANT 6-BEDROOM FAMILY HOME WITH VIEWS OF ST. AUBIN'S BAY

Introducing an elegant and spacious detached house featuring 6 bedrooms, 4 bathrooms and 4 reception rooms all of which have panoramic views.

Set high up on the hillside, this charming residence boasts stunning vistas of St. Aubin's Bay and is filled with an abundance of natural light. The property offers parking spaces for up to 5 cars and a levelled garden area which lends itself to gardening or outdoor activities.

Spanning across three floors and with a total area of 3,145 sq. ft, the accommodation provides ample space and convenience, allowing for comfortable and flexible living arrangements. The 4 bathrooms cater to the needs of a large household, ensuring convenience and privacy for all.

The highlight of this property is undoubtedly the breathtaking views it offers, encompassing the picturesque St. Aubin's Bay. Whether it's enjoying a morning coffee or entertaining friends and family, the bay serves as a captivating backdrop.

Generous storage options throughout the house contribute to its practicality. The residence also presents enormous potential, allowing for customization to suit individual preferences.

With no onward chain, this house presents a very attractive opportunity.





CHRISTIE'S

INTERNATIONAL REAL ESTATE

Properties







CHRISTIE'S  
INTERNATIONAL REAL ESTATE

Hunt Estates



























## FEATURES

- Detached six-bedroom home
- Four bathrooms
- Superb views across St. Aubin's Bay
- Generous storage
- Elevated hillside location
- Huge potential
- Level garden
- Private driveway approach

## INFORMATION

- All mains' services (excluding gas)
- No onward chain
- Oil fired central heating
- Double Glazed
- Parking for 5 vehicles
- Parish rates for 2022 were £738.70
- Freehold and Entitled/Licensed



Sarah Gallichan  
Property Negotiator

sarah@huntstates.com  
T +44 (0)7700 713574  
www.huntstates.com  
9 New Street, St Helier,  
Jersey, JE2 3RA

CHRISTIE'S | Hunt Estates  
INTERNATIONAL REAL ESTATE

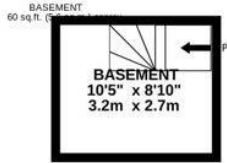
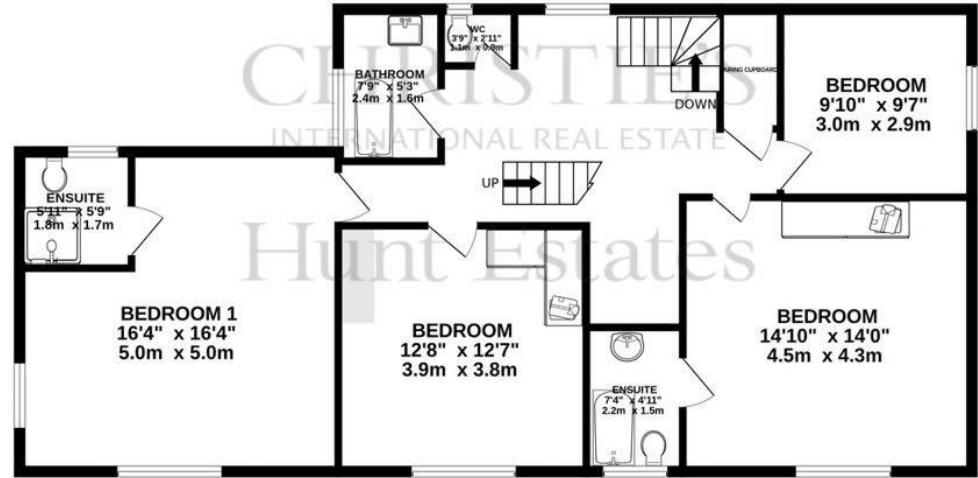


David Voak  
Property Negotiator

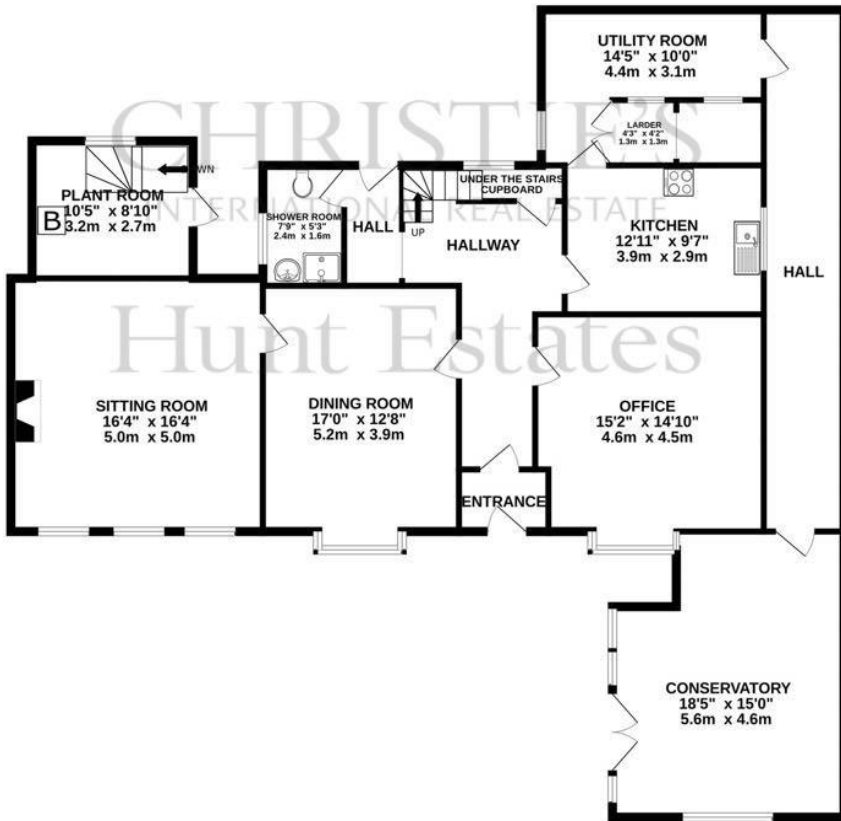
david@huntstates.com  
T +44 (0)7797 725621  
www.huntstates.com  
9 New Street, St Helier,  
Jersey, JE2 3RA

CHRISTIE'S | Hunt Estates  
INTERNATIONAL REAL ESTATE

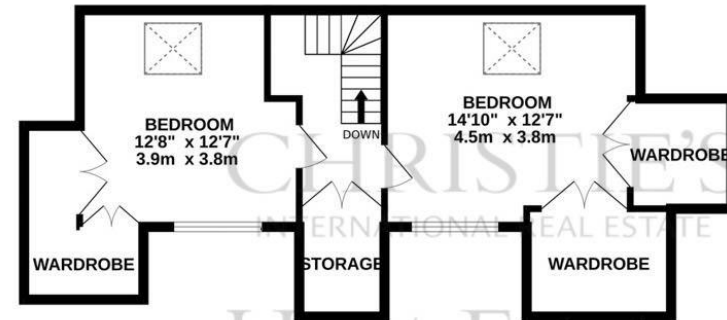
1ST FLOOR  
1187 sq.ft. (110.3 sq.m.) approx.



GROUND FLOOR  
1610 sq.ft. (149.6 sq.m.) approx.



2ND FLOOR  
560 sq.ft. (52.0 sq.m.) approx.



TOTAL FLOOR AREA : 3145sq.ft. (292.2 sq.m.) approx.

Whilst every attempt has been made to ensure the accuracy of the floorplan contained here, measurements of doors, windows, rooms and any other items are approximate and no responsibility is taken for any error, omission or mis-statement. This plan is for illustrative purposes only and should be used as such by any prospective purchaser. The services, systems and appliances shown have not been tested and no guarantee as to their operability or efficiency can be given.

Made with Metropix ©2023

As the selected exclusive affiliate of Christie's International Real Estate in Jersey, Channel Islands, Hunt Estates combines local expertise with global reach via Christie's affiliation to the most famous real estate companies in the world.

An invitation-only affiliate network, Christie's International Real Estate selected Hunt Estates in 2020 to represent the famous Christie's brand in the sphere of luxury real estate in Jersey.



# CHRISTIE'S | Hunt Estates

INTERNATIONAL REAL ESTATE

9 New Street, St Helier, Jersey, JE2 3RA, Channel Islands | +44 1534 860650 | [www.huntestates.com](http://www.huntestates.com) | [enquiries@huntestates.com](mailto:enquiries@huntestates.com)

Disclaimer: All information provided herein has been obtained from sources believed reliable, but may be subject to errors, omissions, change of price, prior sale, withdrawal without notice. Hunt Estates make no representation, warranty, or guarantee as to accuracy of any information contained herein. You should consult your advisors for an independent investigation of any properties. All viewings to be conducted through Hunt Estates.