



Hunt Estates

Three Bedroom Apartment with South Facing Balcony
St. Saviour, Jersey

THREE BEDROOM APARTMENT WITH SOUTH FACING BALCONY

This renovated property which is 1650 sq. ft, completed in 2019, offers comfortable and contemporary living in a desirable location in Jersey, St. Saviour.

The highlight of the home is the large eat-in kitchen, perfect for gathering and enjoying meals together. The kitchen boasts ample space and modern fixtures. The spacious sitting/dining room is complemented by a large South-facing balcony, inviting natural light, and offering a pleasant space to relax and unwind.

With three double bedrooms, this home provides ample storage space. Two of the bedrooms feature en-suite bathrooms and the master has built in wardrobes. The family shower room adds to the modern convenience of the property, while a separate utility room caters to practical needs.

Parking is available for one vehicle, with the added advantage of a single garage for secure storage and is all wired with electrics. Additionally, visitors will find convenient parking facilities on the premises. Residents can also enjoy the benefits of communal gardens, providing a green and serene environment.

The property's location is situated close to major secondary schools, only a 15-minute walk from the town centre, and on the number 3 bus route, making daily life convenient and enjoyable.

























FEATURES

- Three double bedrooms apartment
- Three bathrooms
- Fully refurbished in 2019
- South facing balcony
- Perfect lock up and leave
- Excellent bus routes (number 3)
- Close to major schools
- No chain

INFORMATION

- Mains water and drains
- Electric Heating
- Double glazed
- Services charges £269 per month (includes sinking fund)
- Parish rates included in the Service charges
- Allocated parking for one plus single garage
- Visitor parking
- Share Transfer

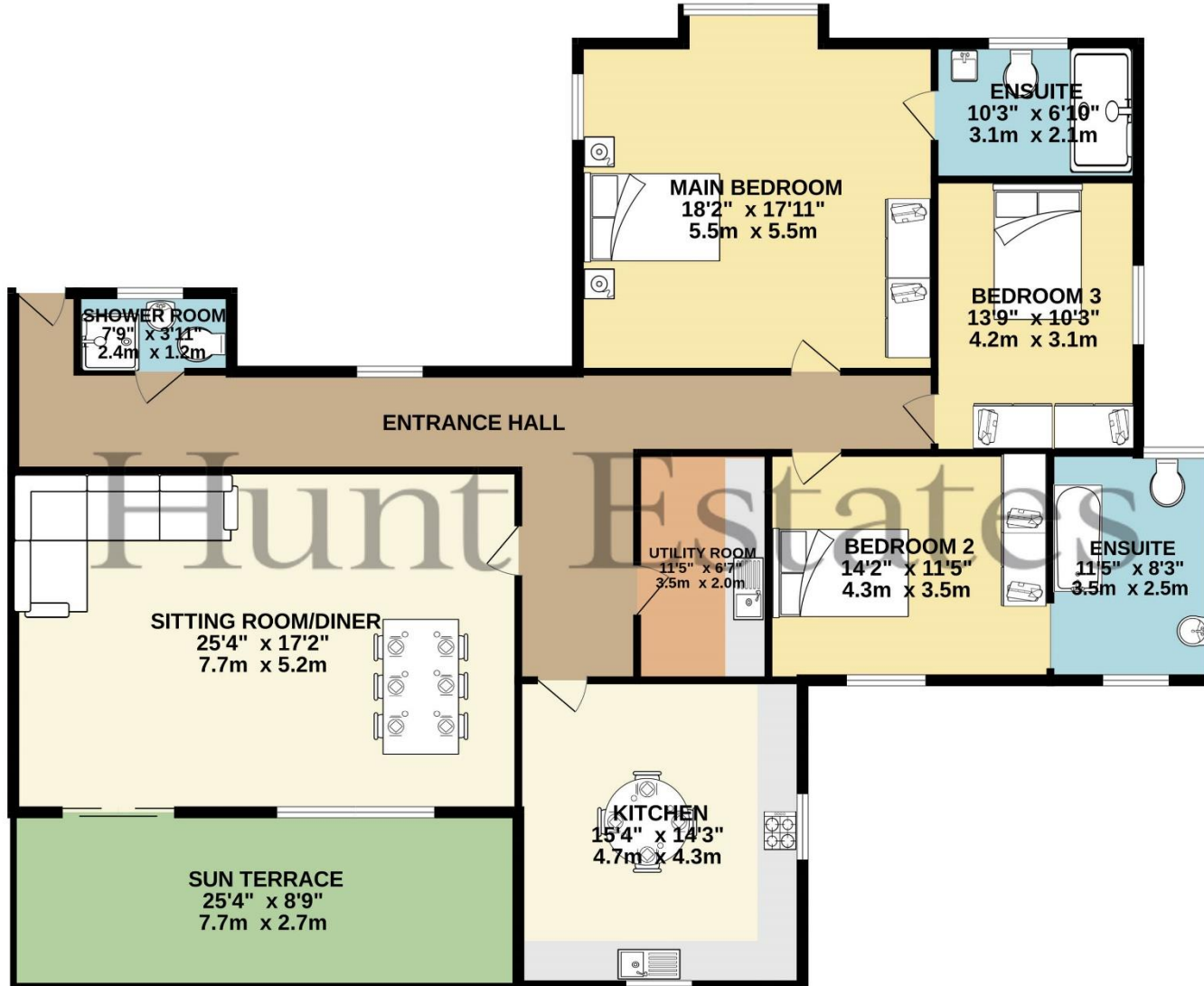


Sarah Gallichan
Property Negotiator

sarah@huntstates.com
T +44 (0)7700 713574
www.huntstates.com
9 New Street, St Helier,
Jersey, JE2 3RA

CHRISTIE'S | Hunt Estates
INTERNATIONAL REAL ESTATE

FIRST FLOOR
1650 sq.ft. (153.3 sq.m.) approx.



TOTAL FLOOR AREA : 1650 sq.ft. (153.3 sq.m.) approx.

Whilst every attempt has been made to ensure the accuracy of the floorplan contained here, measurements of doors, windows, rooms and any other items are approximate and no responsibility is taken for any error, omission or mis-statement. This plan is for illustrative purposes only and should be used as such by any prospective purchaser. The services, systems and appliances shown have not been tested and no guarantee as to their operability or efficiency can be given.
Made with Metropix ©2023



Hunt Estates

9 New Street, St Helier, Jersey, JE2 3RA, Channel Islands | +44 1534 860650 | www.huntestates.com | enquiries@huntestates.com

Disclaimer: All information provided herein has been obtained from sources believed reliable, but may be subject to errors, omissions, change of price, prior sale, withdrawal without notice. Hunt Estates make no representation, warranty, or guarantee as to accuracy of any information contained herein. You should consult your advisors for an independent investigation of any properties. All viewings to be conducted through Hunt Estates.