



Hunt Estates

Four Bedroom Home with Sea Views  
St. Helier, Jersey

## FOUR BEDROOM HOME WITH SEA VIEWS

Beautiful semi-detached family home located on the outskirts of town with sea views. Boasting four double bedrooms and two reception rooms, this bright, spacious home has everything a family requires.

Ground floor comprising; entrance porch, entrance hall, sitting room, family room/dining room, modern kitchen/breakfast room with exposed brick feature wall, a cloakroom, and a storage cupboard. There is also a lean-to conservatory.

The first floor is split level and comprises; four double bedrooms, one of which has a beautiful original feature fireplace. There is also a modern house bathroom, separate WC, and storage cupboards.

The garden is split level and offers wonderful sea views. Both the front and back garden are laid to lawn. There is a delightful patio/BBQ area from the lean-to conservatory, a perfect area for entertaining family and friends in the summer months.

The property is in a good catchment area, located on a great bus route, close to amenities, town, and local beaches.

Viewings are not to be missed.



















## FEATURES

- Four-bedroom semi-detached home
- Two reception rooms
- Lean-to conservatory with access to patio/BBQ area
- Split level front and rear gardens
- Wonderful sea views from house and garden
- Located on a great bus route, close to amenities, town, and local beaches

## INFORMATION

- Mains water and drains
- Oil fired central heating
- All double glazed (except one wooden sash window and port hole window in upstairs WC)
- Parking for 3 cars
- Parish rates for 2022 were £408
- Freehold and Entitled/Licensed

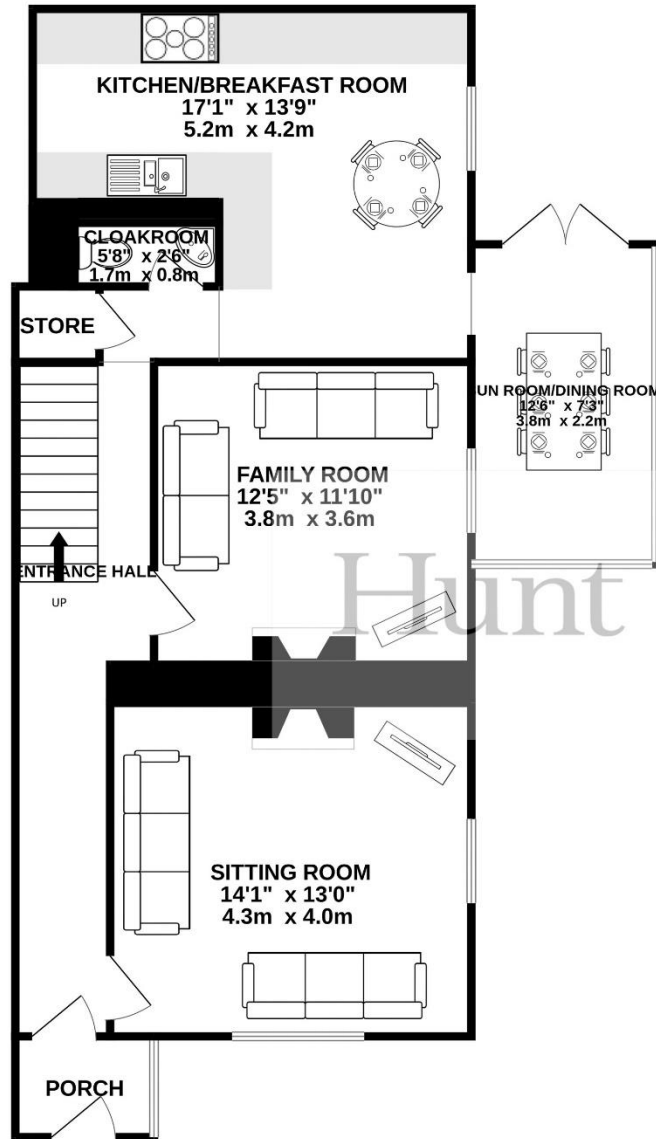


Gill Acton  
Property Negotiator

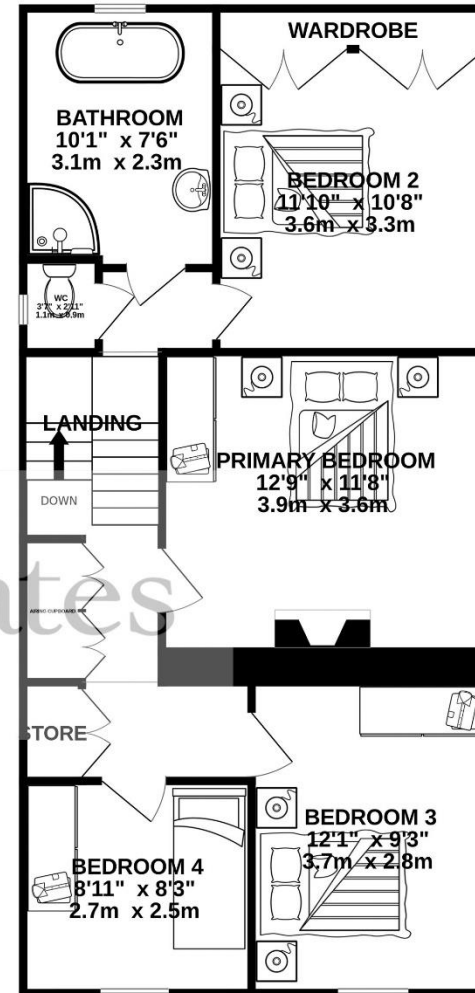
[gill.acton@huntestates.com](mailto:gill.acton@huntestates.com)  
T +44 (0)7797 961649  
[www.huntestates.com](http://www.huntestates.com)  
9 New Street, St Helier,  
Jersey, JE2 3RA

**CHRISTIE'S** | Hunt Estates  
INTERNATIONAL REAL ESTATE

GROUND FLOOR  
772 sq.ft. (71.7 sq.m.) approx.



1ST FLOOR  
677 sq.ft. (62.9 sq.m.) approx.



TOTAL FLOOR AREA : 1449 sq.ft. (134.6 sq.m.) approx.

Whilst every attempt has been made to ensure the accuracy of the floorplan contained here, measurements of doors, windows, rooms and any other items are approximate and no responsibility is taken for any error, omission or mis-statement. This plan is for illustrative purposes only and should be used as such by any prospective purchaser. The services, systems and appliances shown have not been tested and no guarantee as to their operability or efficiency can be given.  
Made with Metropix ©2023

As the selected exclusive affiliate of Christie's International Real Estate in Jersey, Channel Islands, Hunt Estates combines local expertise with global reach via Christie's affiliation to the most famous real estate companies in the world.

An invitation-only affiliate network, Christie's International Real Estate selected Hunt Estates in 2020 to represent the famous Christie's brand in the sphere of luxury real estate in Jersey.



# CHRISTIE'S | Hunt Estates

INTERNATIONAL REAL ESTATE

9 New Street, St Helier, Jersey, JE2 3RA, Channel Islands | +44 1534 860650 | [www.huntestates.com](http://www.huntestates.com) | [enquiries@huntestates.com](mailto:enquiries@huntestates.com)

Disclaimer: All information provided herein has been obtained from sources believed reliable, but may be subject to errors, omissions, change of price, prior sale, withdrawal without notice. Hunt Estates make no representation, warranty, or guarantee as to accuracy of any information contained herein. You should consult your advisors for an independent investigation of any properties. All viewings to be conducted through Hunt Estates.