



CHRISTIE'S | **Hunt Estates**
INTERNATIONAL REAL ESTATE

Grand and Imposing Country Residence
Trinity, Jersey

GRAND AND IMPOSING COUNTRY RESIDENCE

A grand and imposing country residence approached through a gated and pillared entrance giving the sense of 'arrival'. The property was built in c.1820s and has some elegant Georgian style features including spacious rooms with high ceilings and large windows allowing the light to flood-in.

It is set in the country parish of Trinity and looks out, South, over green fields having a most tranquil and pleasant outlook.

In the vicinity there are beautiful country walks, cliff paths on the north coast, and a local grocery store.

The property is over 6,000 sq. ft and includes a main, 5-bedroom house and a separate spacious 2-bedroom cottage. The interior is designed in the country house style. It would suit a growing family, is a perfect two generation home, for frequent house guests or as a home with income.

Ground floor comprises; Elegant entrance porch with attractive cornice and columns, the inner entrance hall has a sweeping mahogany staircase leading to the upper floors; and a cloakroom with a door that leads down to the basement area, there is an office that has a door leading to the raised terrace overlooking the garden, the sitting room is some 27ft long with large windows, both north and South, allowing-in plenty of light; it also has a gas fire for cosy winter evenings, the grand dining room is positioned between the sitting room and kitchen making it very convenient for entertaining, the kitchen breakfast room is over 26 ft in length with aga and centre island, it is open plan and leads to the sun room; this whole area is where the family congregate, enjoying the views through full-height windows with access to the garden. There is a laundry room to the side of the kitchen with outside access.

The first floor comprises; three double bedrooms all with large sash windows. The main bedroom has a large en suite bathroom with jacuzzi bath, there is a house bathroom with a separate walk-in shower.

The top floor comprises; two double bedrooms with far reaching country views.

The basement is 747 sq. ft and comprises; an office and workshop with windows south, two further rooms; one for storage and one containing the boiler etc.

The cottage comprises; ground floor; private entrance which can also be accessed internally from the main house, snug, double bedroom (1) with an en-suite. The first floor comprises; spacious 28ft sitting room, good size kitchen with space for a table, double bedroom (2), with fitted wardrobes, dressing room and an en suite bathroom. There is also a utility room and small ironing room.

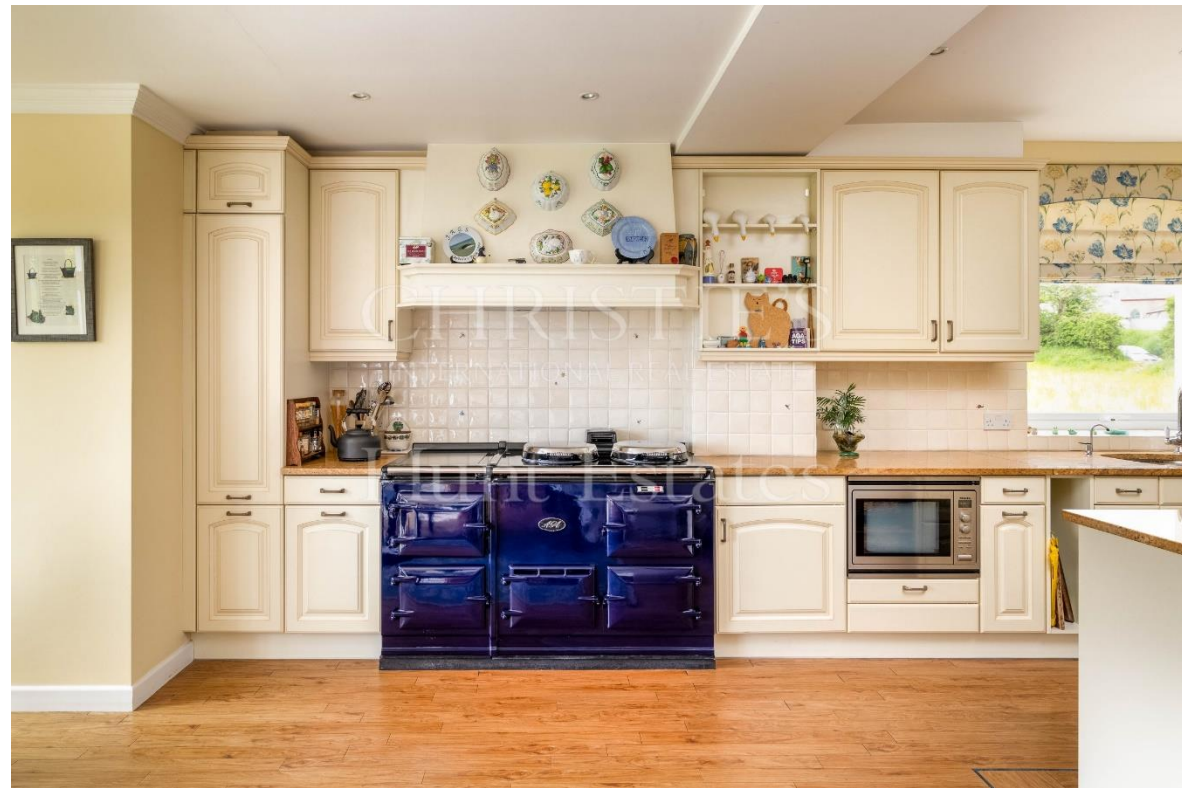
The garden is South facing and is mainly laid to lawn. There are mature attractive borders, raised borders, colourful planting, clipped hedges, shrubs, and trees. There is a patio and raised terrace to enjoy the verdant country view and fields beyond.

There is a double integral garage and parking for over 10 cars in the gravelled courtyard.

The property has been lovingly maintained over the years and is now ready for a new family to upgrade and make their own.

Main House



















The Cottage





CHRISTOPHER
INTERNATIONAL REAL ESTATE

Hunt Forest







WINTER
Real Estate
Estates



FEATURES

- Main house 5 bedrooms with 2-bedroom cottage
- Main house with 4 reception rooms
- Attractive, South facing garden
- Over 6,000 sq. ft of accommodation
- Large basement with office and workshop
- Elegant Georgian features including sash windows and high ceilings
- Far reaching countryside views
- Desirable parish of Trinity

INFORMATION

- High Borehole water through filtration system with an option to be added to mains
- Mains drains
- Oil fired central heating
- Double integral garage and ample parking
- Parish rates for 2022 were £1,333
- Freehold and Entitled

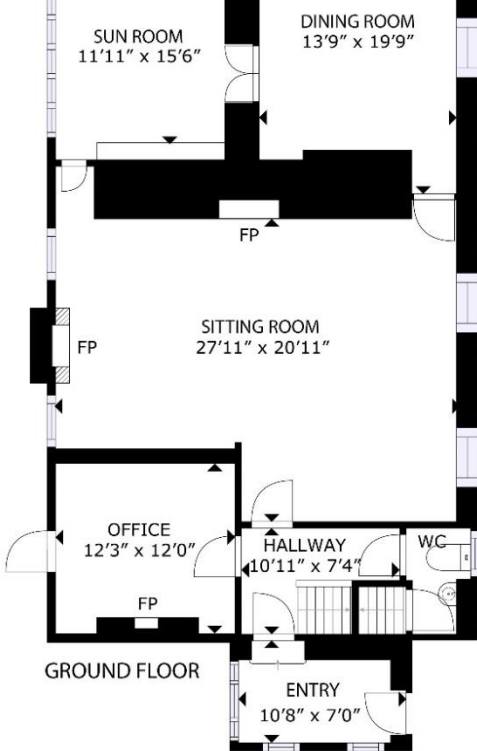
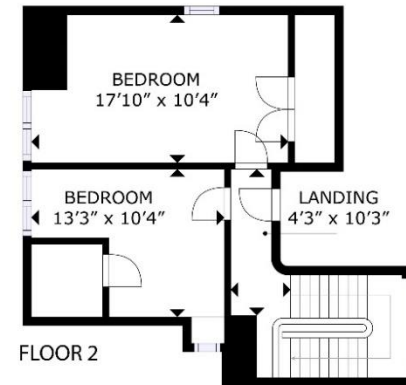
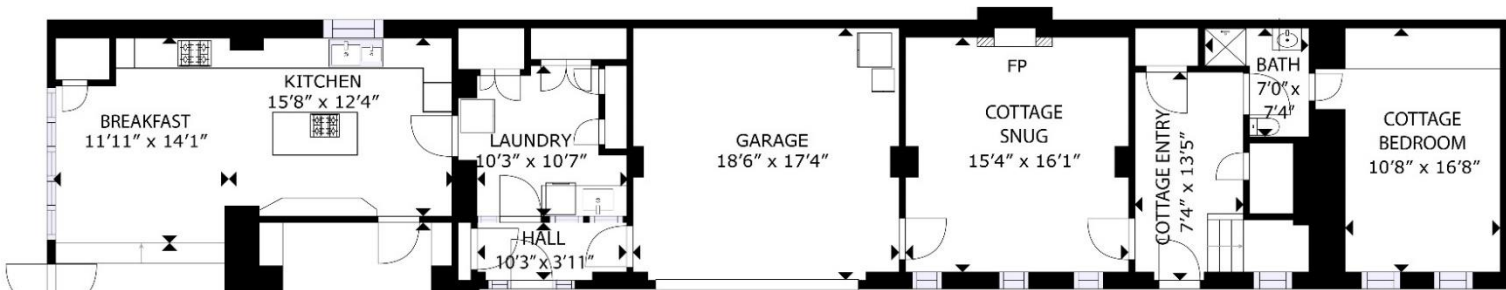


Gill Hunt, Fellow NAEA
Director

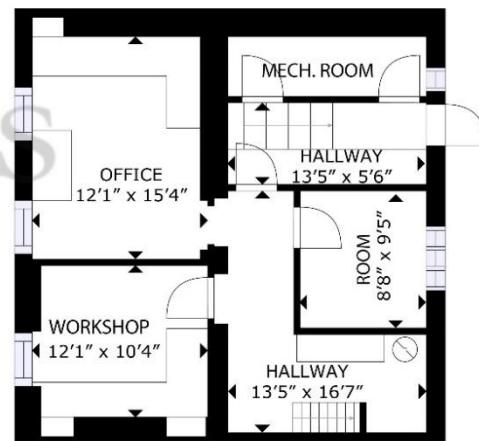
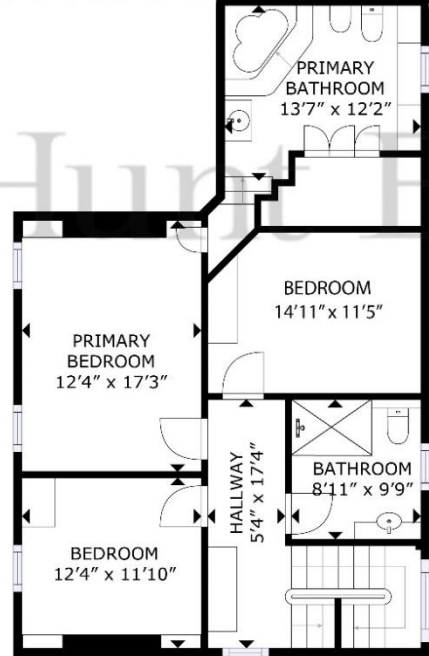
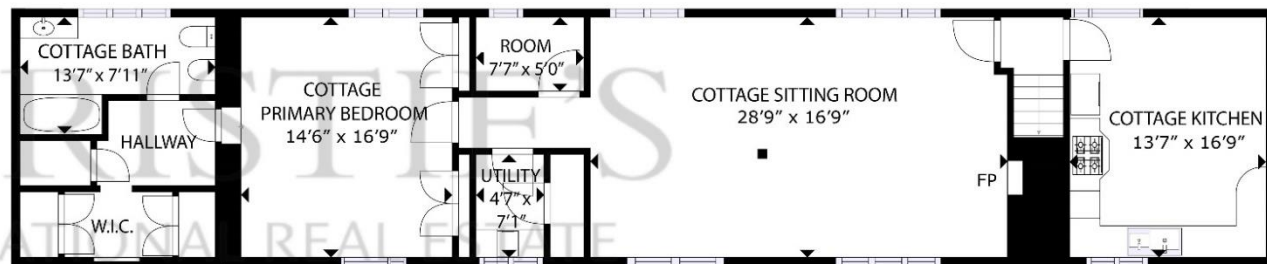
gill@huntstates.com
T +44 (0)7797 721881
www.huntstates.com
9 New Street, St Helier,
Jersey, JE2 3RA

CHRISTIE'S | Hunt Estates
INTERNATIONAL REAL ESTATE





CHURCHILL'S
INTERNATIONAL REAL ESTATE
Hunt Estates



GROSS INTERNAL AREA
BASEMENT: 741 sq. ft, GROUND FLOOR: 2704 sq. ft
FLOOR 1: 2363 sq. ft, FLOOR 2: 425 sq. ft
TOTAL: 6233 sq. ft

EXCLUDED AREAS: GARAGE: 317 sq. ft
SIZES AND DIMENSIONS ARE APPROXIMATE, ACTUAL MAY VARY

FLOOR 1

BASEMENT

As the selected exclusive affiliate of Christie's International Real Estate in Jersey, Channel Islands, Hunt Estates combines local expertise with global reach via Christie's affiliation to the most famous real estate companies in the world.

An invitation-only affiliate network, Christie's International Real Estate selected Hunt Estates in 2020 to represent the famous Christie's brand in the sphere of luxury real estate in Jersey.

CHRISTIE'S | Hunt Estates

INTERNATIONAL REAL ESTATE

9 New Street, St Helier, Jersey, JE2 3RA, Channel Islands | +44 1534 860650 | www.huntestates.com | enquiries@huntestates.com

Disclaimer: All information provided herein has been obtained from sources believed reliable, but may be subject to errors, omissions, change of price, prior sale, withdrawal without notice. Hunt Estates make no representation, warranty, or guarantee as to accuracy of any information contained herein. You should consult your advisors for an independent investigation of any properties. All viewings to be conducted through Hunt Estates.