



A CHARMING DETACHED BUNGALOW

This modern, detached bungalow is beautifully presented throughout. It is set in a rural location on the St. Helier/Trinity border with easy access to town. The property was completely renovated in 2017 to the highest of standards.

On entering the bungalow, there is a spacious entrance hall which leads through to a large open plan kitchen/sitting room/diner fitted with a wood burning stove which gives a warm and inviting atmosphere. The property has three double bedrooms, one of which is en-suite, and a house bathroom. There is also a separate utility room for added convenience.

The sunny, flat lawned garden can be accessed via the sitting room. It is fully enclosed and therefore safe for children and pets and is the perfect space for entertaining and relaxing.

The property also benefits from driveway parking for two cars and a garage.

Viewings come highly recommended.









CHRISTIE'S
INTERNATIONAL REAL ESTATE
L Hunt Estates









CHRISTIE'S

INTERNATIONAL REAL ESTATE

immovate









CHRISTIE'S

HUNTS & REAL ESTATE

Hunt & State

FEATURES

- Modern, detached bungalow
- Refurbished in 2017
- Three double bedrooms, two bathrooms
- Fully enclosed, safe, and flat lawned garden
- Beautifully presented throughout

INFORMATION

- Mains drains and water
- Underfloor wet electric heating
- Single garage and parking for 2 cars
- Parish rates for 2022 were £566.90
- Freehold and Entitled



Sacha Butlin
Property Negotiator

sacha@huntstates.com
T +44 (0)7829 917449
www.huntstates.com
9 New Street, St Helier,
Jersey, JE2 3RA

CHRISTIE'S | Hunt Estates
INTERNATIONAL REAL ESTATE



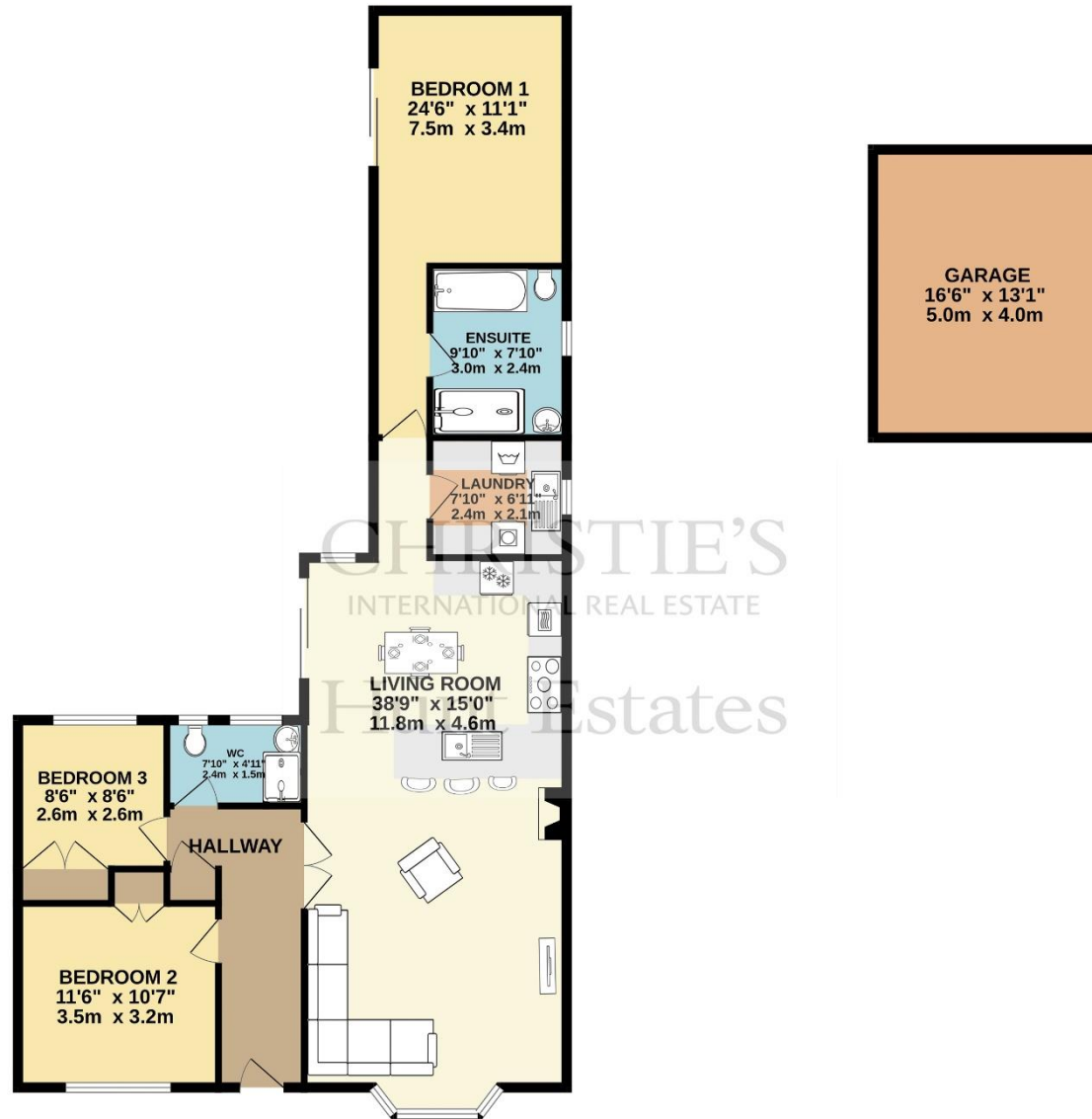
Sarah Gallichan
Property Negotiator

sarah@huntstates.com
T +44 (0)7700 713574
www.huntstates.com
9 New Street, St Helier,
Jersey, JE2 3RA

CHRISTIE'S | Hunt Estates
INTERNATIONAL REAL ESTATE



GROUND FLOOR
1369 sq.ft. (127.2 sq.m.) approx.



BUNGALOW WITH GARAGE AND GARDEN

TOTAL FLOOR AREA : 1369 sq.ft. (127.2 sq.m.) approx.

Whilst every attempt has been made to ensure the accuracy of the floorplan contained here, measurements of doors, windows, rooms and any other items are approximate and no responsibility is taken for any error, omission or mis-statement. This plan is for illustrative purposes only and should be used as such by any prospective purchaser. The services, systems and appliances shown have not been tested and no guarantee as to their operability or efficiency can be given.

Made with Metropix ©2023

As the selected exclusive affiliate of Christie's International Real Estate in Jersey, Channel Islands, Hunt Estates combines local expertise with global reach via Christie's affiliation to the most famous real estate companies in the world.

An invitation-only affiliate network, Christie's International Real Estate selected Hunt Estates in 2020 to represent the famous Christie's brand in the sphere of luxury real estate in Jersey.



CHRISTIE'S | **Hunt Estates**
INTERNATIONAL REAL ESTATE

9 New Street, St Helier, Jersey, JE2 3RA, Channel Islands | +44 1534 860650 | www.huntestates.com | enquiries@huntestates.com

Disclaimer: All information provided herein has been obtained from sources believed reliable, but may be subject to errors, omissions, change of price, prior sale, withdrawal without notice. Hunt Estates make no representation, warranty, or guarantee as to accuracy of any information contained herein. You should consult your advisors for an independent investigation of any properties. All viewings to be conducted through Hunt Estates.