



CHRISTIE'S

INTERNATIONAL REAL ESTATE

Hunt Estates

CHRISTIE'S | Hunt Estates
INTERNATIONAL REAL ESTATE

Four-bedroom granite home with sea views
St. Ouen, Jersey

FOUR BEDROOM GRANITE HOME WITH SEA VIEWS

A beautiful granite property located at L'Etacq in St Ouen with uninterrupted sea views.

The property has undergone a full renovation and has been upgraded to ensure the utmost comfort and style.

Ground floor comprising; entrance hall, great sized sitting/dining room with log burner for cosying up on cold winter evenings, beautiful eat-in kitchen, double bedroom, and cloakroom.

First floor comprising; three spacious double bedrooms, the main bedroom with a walk-in wardrobe and en-suite bathroom, and house bathroom.

There is ample space for the whole family or visiting guests. The modern open living concept enhances the sense of space and provides an inviting atmosphere for entertaining and everyday living.

Externally, this wonderful home benefits from a garden to the front of the property. It is low maintenance with patio areas and faux grass, and being fully enclosed it is safe for children and pets.

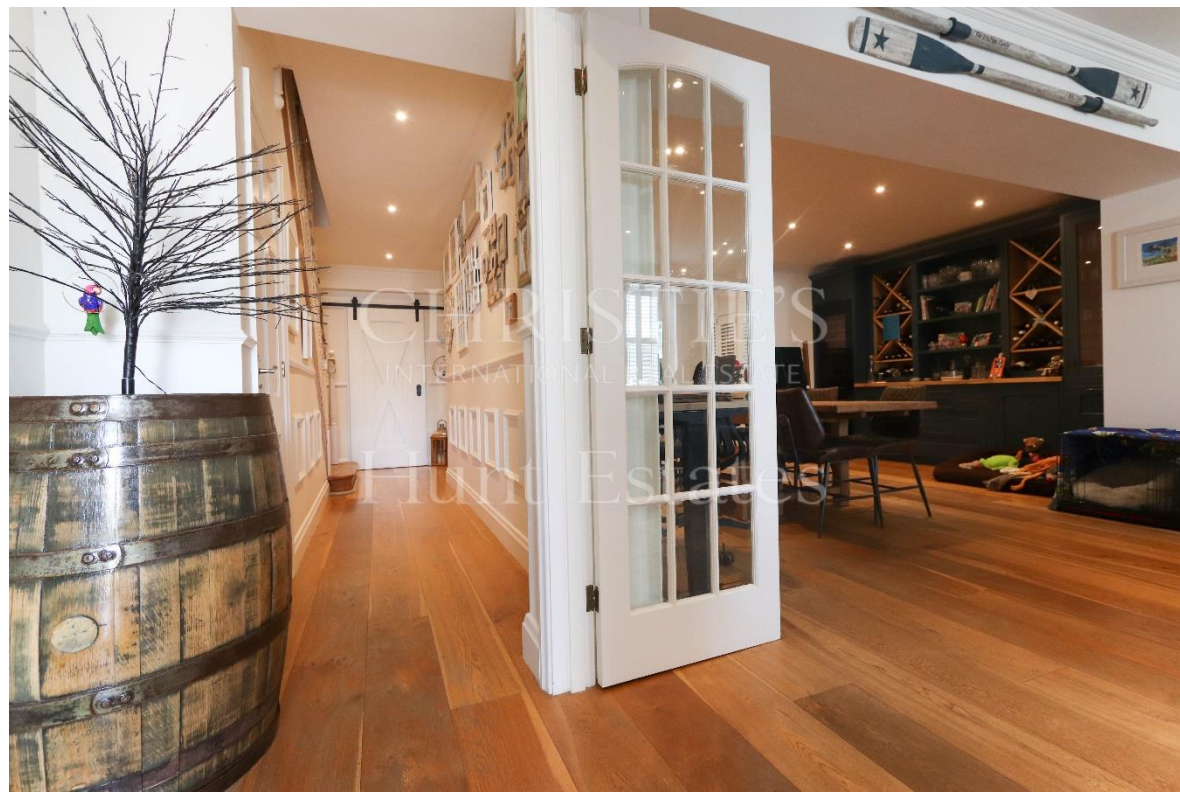
There are 3 parking spaces plus visitor parking available.

Located in the west of the island, the property is only a short walk to the beach and to local amenities in St Ouen's village. There are lovely cliff path, green lane, and coastal walks nearby and one can enjoy the stunning summer sunsets down at St Ouen's Bay. The airport is also only a 10-minute drive away.

This lovely home within a breath-taking coastal setting is ready for a new family to call home and viewings come highly recommended.

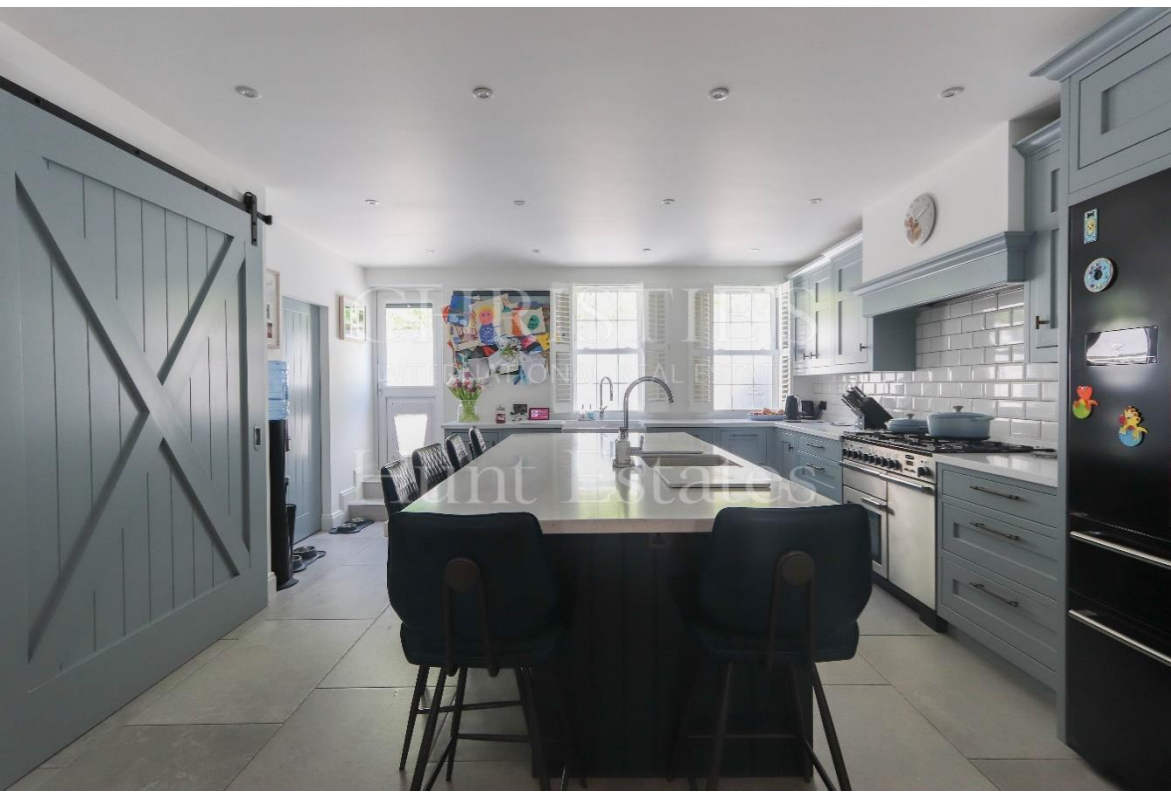












CHRISTIE'S
INTERNATIONAL REAL ESTATE

HUNTERS









CHRISTIE'S
INTERNATIONAL REAL ESTATE

Hunt Estates



CHRISTIE'S
INTERNATIONAL REAL ESTATE

Hunt Estates





FEATURES

- Four-bedroom granite property
- Stunning sea views
- Rural but desirable location
- Low maintenance, fully enclosed garden
- Has undergone a full renovation
- Beautifully presented throughout
- Ideally located close to amenities and the beach

INFORMATION

- Mains water and drains
- Bottled gas heating
- Double glazed
- Parking for 3 cars plus visitor parking
- Service charge of £170pcm
- Parish rates included in service charge
- Share transfer

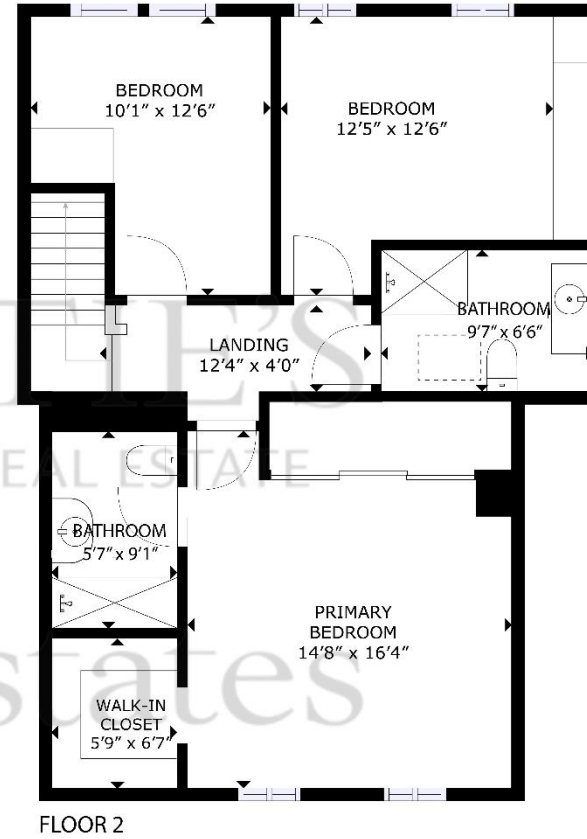
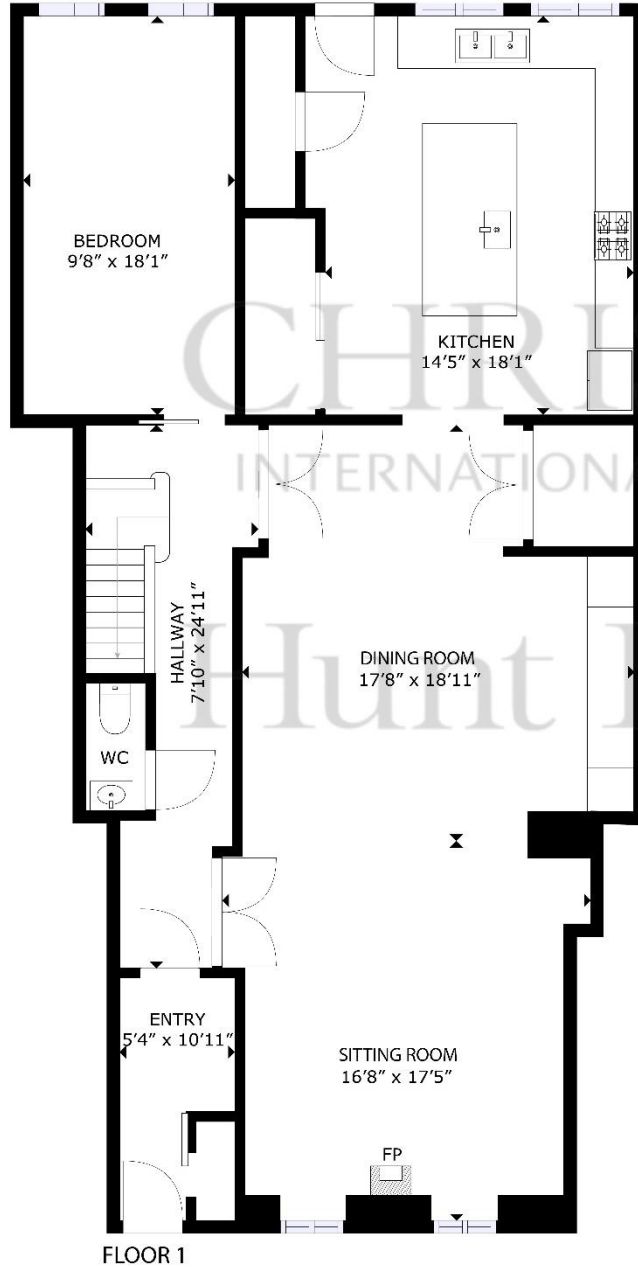


Gill Acton
Property Negotiator

gill.acton@huntstates.com
T +44 (0)7797 961649
www.huntstates.com
9 New Street, St Helier,
Jersey, JE2 3RA

CHRISTIE'S | Hunt Estates
INTERNATIONAL REAL ESTATE





GROSS INTERNAL AREA
 FLOOR 1: 1321 sq. ft, FLOOR 2: 803 sq. ft
 TOTAL: 2124 sq. ft

SIZES AND DIMENSIONS ARE APPROXIMATE, ACTUAL MAY VARY

Disclaimer: All information provided herein has been obtained from sources believed reliable, but may be subject to errors, omissions, change of price, prior sale, withdrawal without notice. Hunt Estates make no representation, warranty, or guarantee as to accuracy of any information contained herein. You should consult your advisors for an independent investigation of any properties. All viewings to be conducted through Hunt Estates.

9 New Street, St Helier, Jersey, JE2 3RA, Channel Islands | +44 1534 860650 | www.huntestates.com | enquiries@huntestates.com

CHRISTIE'S INTERNATIONAL REAL ESTATE

Hunt Estates



As the selected exclusive affiliate of Christie's International Real Estate in Jersey, Channel Islands, Hunt Estates combines local expertise with global reach via Christie's affiliation to the most famous real estate companies in the world. An invitation-only affiliate network, Christie's International Real Estate selected Hunt Estates in 2020 to represent the famous Christie's brand in the sphere of luxury real estate in Jersey.