



Hunt Estates

Charming Detached Two Bedroom Cottage
St. Helier, Jersey

CHARMING DETACHED TWO BEDROOM COTTAGE

A detached two-bedroom cottage situated on a quiet lane in St Saviour. The property has been well maintained and is located close to local amenities, schools, bars and restaurants.

Ground floor comprising; welcoming entrance hall with modern fitted storage, sitting room with a working fireplace with granite surround, a modern fitted kitchen with centre island and doors out to the garden, and a house bathroom.

At first floor there is a double bedroom, and a smaller double bedroom.

Externally the cottage benefits from a private, enclosed lawned garden, which has more than enough space for children and pets to play. There is also a patio area to the front of the property, which can fit a small table and chairs.

In addition, there is a single garage, and subject to planning, has the potential to be converted into a revenue-generating unit. Part of the garage is currently being used as a utility room and storage. Additionally, there is parking available for at least 4 cars.

This lovely home would make a great step up from apartment living and is highly recommended for viewings.





Hunt Estates













Hunt Estates

Willow Tree
Cottage

FEATURES

- Modern fitted kitchen with centre island
- Detached two-bedroom cottage
- Sitting room with working fireplace
- Enclosed private garden
- Located on a quiet lane
- Close to schools and amenities

INFORMATION

- No forward chain
- Mains water and drains
- Oil fired central heating
- Double glazed
- Single garage and parking for 3 cars
- Parish rates for 2023 were £389.76
- Freehold and Entitled/Licensed



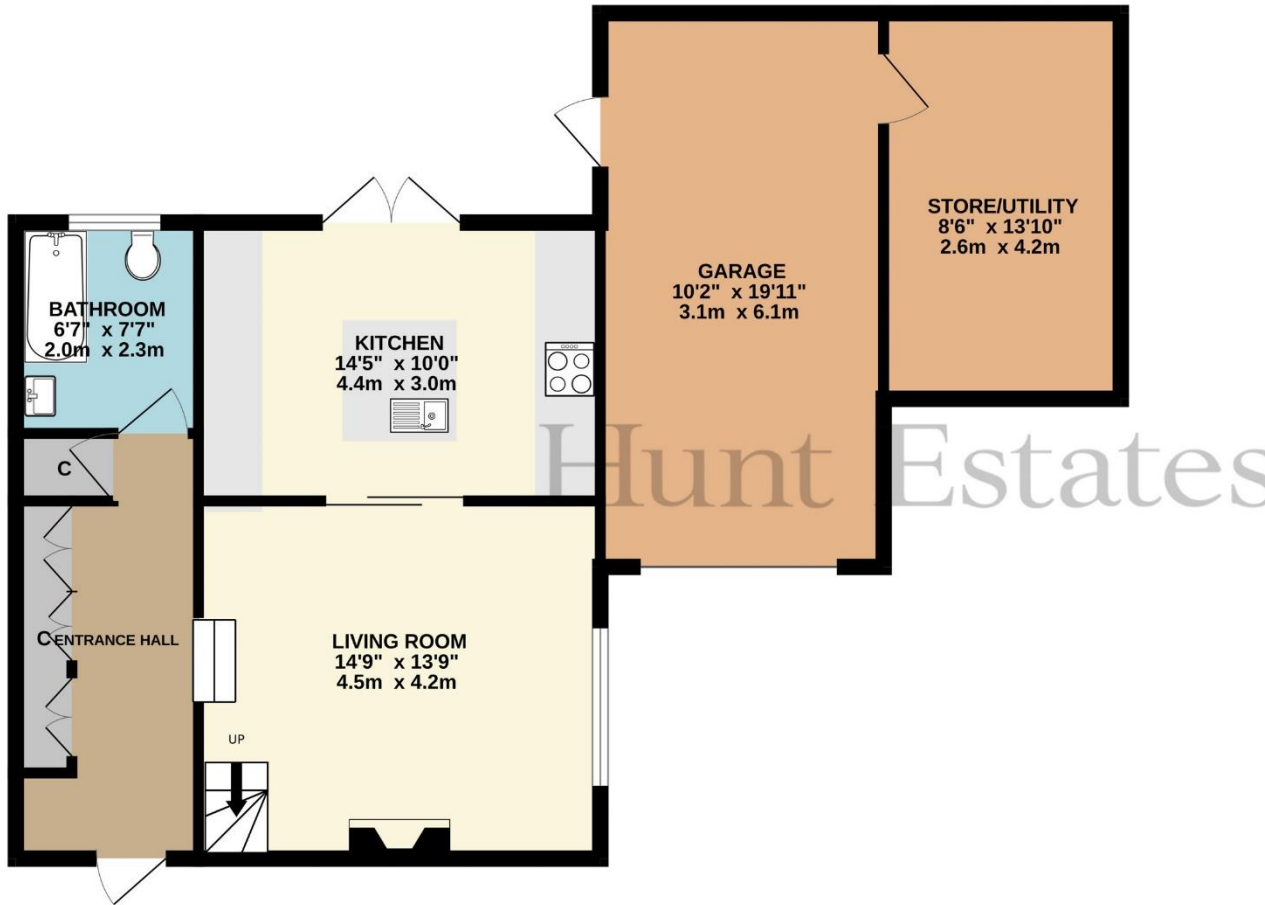
Gill Acton
Property Negotiator

gill.acton@huntstates.com
T +44 (0)7797 961649
www.huntstates.com
9 New Street, St Helier,
Jersey, JE2 3RA

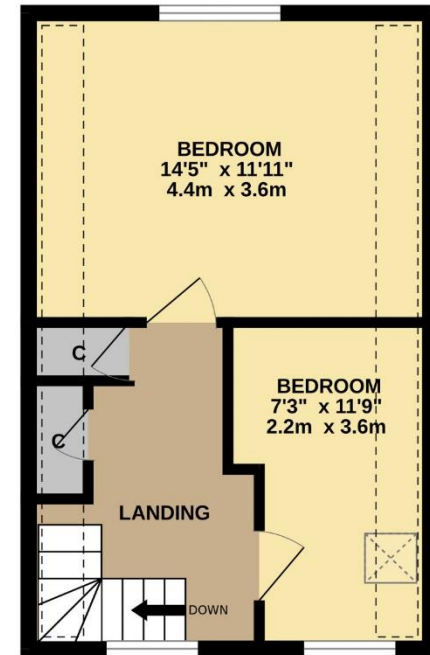
CHRISTIE'S | Hunt Estates
INTERNATIONAL REAL ESTATE



GROUND FLOOR
797 sq.ft. (74.0 sq.m.) approx.



1ST FLOOR
330 sq.ft. (30.7 sq.m.) approx.



TOTAL FLOOR AREA : 1127 sq.ft. (104.7 sq.m.) approx.

Whilst every attempt has been made to ensure the accuracy of the floorplan contained here, measurements of doors, windows, rooms and any other items are approximate and no responsibility is taken for any error, omission or mis-statement. This plan is for illustrative purposes only and should be used as such by any prospective purchaser. The services, systems and appliances shown have not been tested and no guarantee as to their operability or efficiency can be given.

Made with Metropix ©2024

Hunt Estates

9 New Street, St Helier, Jersey, JE2 3RA, Channel Islands | +44 1534 860650 | www.huntestates.com | enquiries@huntestates.com

Disclaimer: All information provided herein has been obtained from sources believed reliable, but may be subject to errors, omissions, change of price, prior sale, withdrawal without notice. Hunt Estates make no representation, warranty, or guarantee as to accuracy of any information contained herein. You should consult your advisors for an independent investigation of any properties. All viewings to be conducted through Hunt Estates.