



FAMILY HOME SET IN DESIRABLE LOCATION

This charming, detached family home is nestled down a quiet country lane in a small development.

Upon arrival, you are greeted with a well-manicured south facing front garden, offering a warm welcome to the property.

Ground floor comprising; large entrance hall with double heightened ceiling, sitting room with open fire and access out onto the south facing garden, archway through to the dining room with access out onto the rear patio. This allows lots of light to flood through and makes the property light and airy throughout. There is also an eat-in kitchen, utility room with access out onto the rear patio and a cloakroom.

First floor comprising; three well-proportioned double bedrooms, the main bedroom being en-suite. There is also the house bathroom on this level, and a large walk-in storage room currently being used as for a library.

The rear patio has lovely views and overlooks an agricultural field.

Externally this property benefits from two parking spaces and a large single garage.

Highly recommended for viewings.















CHRISTIE'S
INTERNATIONAL REAL ESTATE
Hunt Estates



CHRISTIE'S
INTERNATIONAL REAL ESTATE
Hunt Estates



FEATURES

- Detached family home
- Views over agricultural field
- Situated down a quiet country lane
- South facing garden
- Two reception rooms
- Granite open fire
- Three well apportioned double bedrooms

INFORMATION

- Main water and drains
- Hardwood double glazing
- Oil fired central heating
- Parish rates for 2022 were £478
- Freehold and Entitled/Licensed



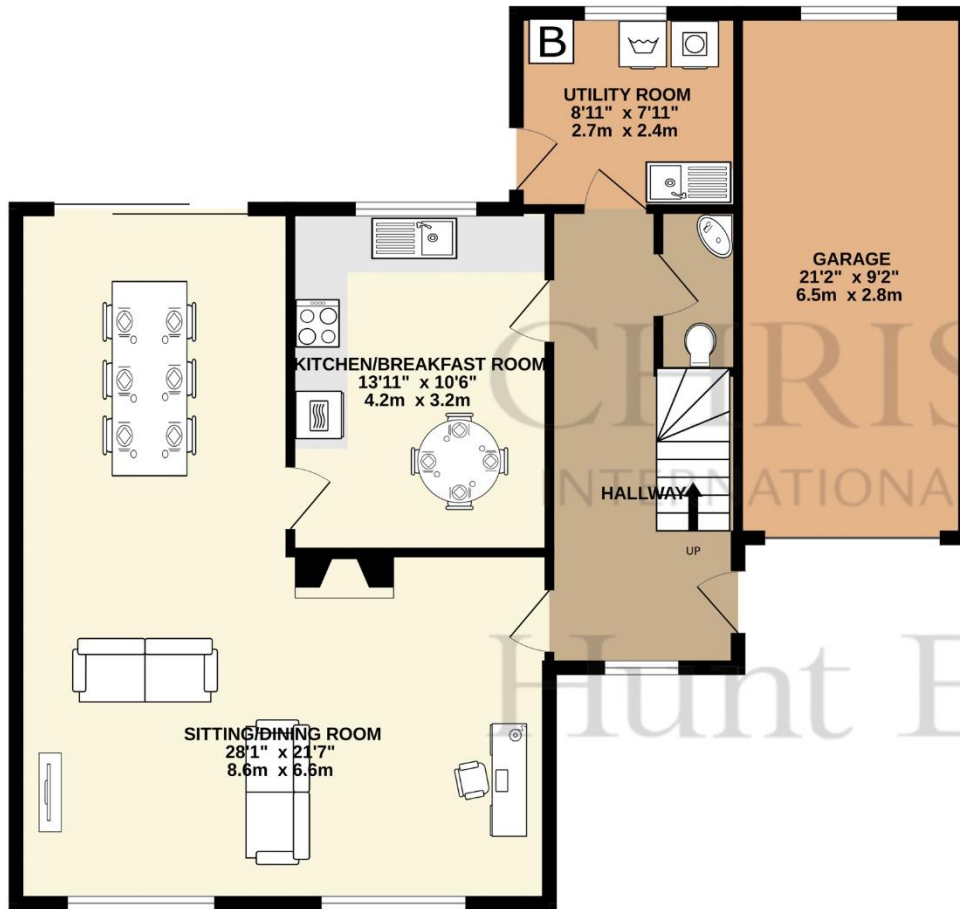
Sacha Butlin
Property Negotiator

sacha@huntstates.com
T +44 (0)7829 917449
www.huntstates.com
9 New Street, St Helier,
Jersey, JE2 3RA

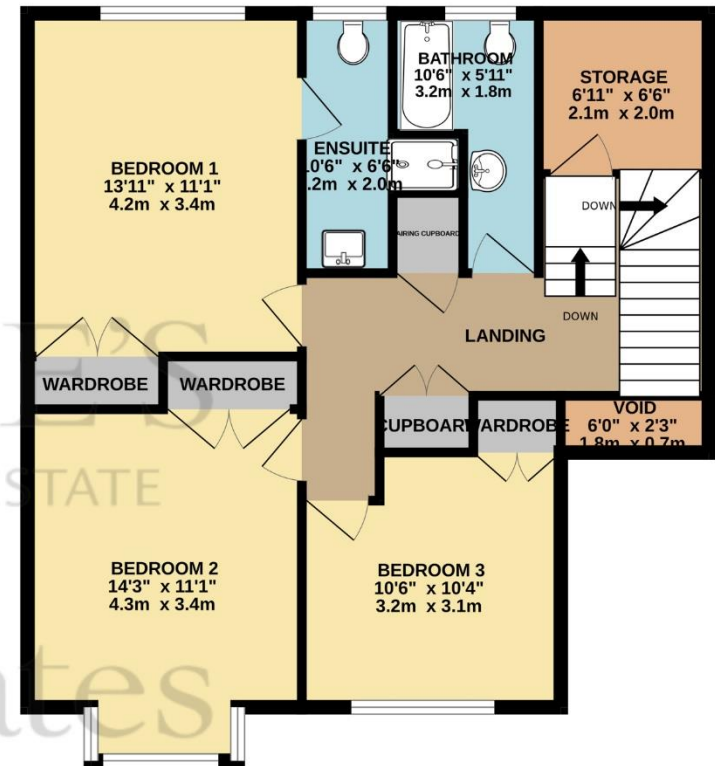
CHRISTIE'S | Hunt Estates
INTERNATIONAL REAL ESTATE



GROUND FLOOR
1005 sq.ft. (93.3 sq.m.) approx.



1ST FLOOR
724 sq.ft. (67.2 sq.m.) approx.



DETACHED HOUSE

TOTAL FLOOR AREA : 1728 sq.ft. (160.6 sq.m.) approx.

Whilst every attempt has been made to ensure the accuracy of the floorplan contained here, measurements of doors, windows, rooms and any other items are approximate and no responsibility is taken for any error, omission or mis-statement. This plan is for illustrative purposes only and should be used as such by any prospective purchaser. The services, systems and appliances shown have not been tested and no guarantee as to their operability or efficiency can be given.

Made with Metropix ©2023

As the selected exclusive affiliate of Christie's International Real Estate in Jersey, Channel Islands, Hunt Estates combines local expertise with global reach via Christie's affiliation to the most famous real estate companies in the world.

An invitation-only affiliate network, Christie's International Real Estate selected Hunt Estates in 2020 to represent the famous Christie's brand in the sphere of luxury real estate in Jersey.



CHRISTIE'S | Hunt Estates

INTERNATIONAL REAL ESTATE

9 New Street, St Helier, Jersey, JE2 3RA, Channel Islands | +44 1534 860650 | www.huntestates.com | enquiries@huntestates.com

Disclaimer: All information provided herein has been obtained from sources believed reliable, but may be subject to errors, omissions, change of price, prior sale, withdrawal without notice. Hunt Estates make no representation, warranty, or guarantee as to accuracy of any information contained herein. You should consult your advisors for an independent investigation of any properties. All viewings to be conducted through Hunt Estates.