



Hunt Estates

Modern Three Bedroom Townhouse
St Helier, Jersey

MODERN THREE BEDROOM TOWNHOUSE

A three-bedroom townhouse set across three floors, which has recently been renovated to make a modern, light and airy home.

Ground floor comprising; entrance hall, spacious fitted, eat-in kitchen and separate sitting room/diner.

First floor comprising; two spacious double bedrooms, with a modern house bathroom.

The main bedroom makes up the top floor with an en-suite shower room, a walk-in wardrobe and plenty of storage.

There is no parking with the property, however there is on street parking nearby. We have been informed that there will be a roads committee meeting to discuss permit parking for Le Vier Mont early summer 2024.

The property is located on Old Trinity Hill, a quiet one-way lane, ideally located close to amenities, such as Waitrose and Co-Op and schools. It is only a short walk to St Helier town centre for those that work in town and there are lovely country lanes nearby to enjoy activities with the family and pets such as walking, running, or cycling.

This property would be a great alternative to apartment living and would be ideal for first time buyers.

Viewings come highly recommended.









FEATURES

- Three bedrooms, two bathrooms
- Main bedroom with en-suite
- Recently renovated throughout
- Modern, bright, and airy home
- Located close to amenities, schools, and St Helier town centre

INFORMATION

- Mains drains and water
- Electric heating
- Double glazing
- On street parking nearby
- No chain
- Freehold and Entitled/Licensed



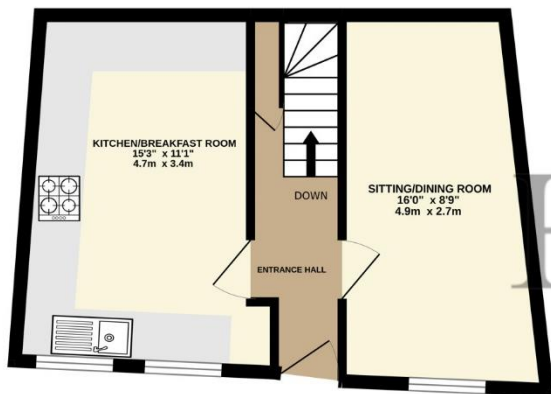
Sarah Gallichan
Property Negotiator

sarah@huntestates.com
T +44 (0)7700 713574
www.huntestates.com
9 New Street, St Helier,
Jersey, JE2 3RA

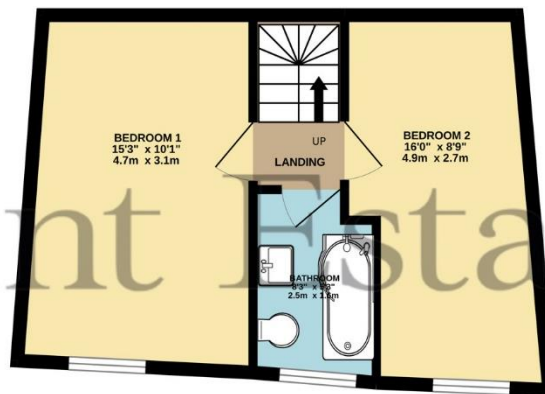
CHRISTIE'S | Hunt Estates
INTERNATIONAL REAL ESTATE



GROUND FLOOR
328 sq.ft. (30.5 sq.m.) approx.



1ST FLOOR
332 sq.ft. (30.8 sq.m.) approx.



2ND FLOOR
254 sq.ft. (23.6 sq.m.) approx.



TOTAL FLOOR AREA : 914 sq.ft. (84.9 sq.m.) approx.

Whilst every attempt has been made to ensure the accuracy of the floorplan contained here, measurements of doors, windows, rooms and any other items are approximate and no responsibility is taken for any error, omission or mis-statement. This plan is for illustrative purposes only and should be used as such by any prospective purchaser. The services, systems and appliances shown have not been tested and no guarantee as to their operability or efficiency can be given.

Made with Metropix ©2022



Hunt Estates

9 New Street, St Helier, Jersey, JE2 3RA, Channel Islands | +44 1534 860650 | www.huntestates.com | enquiries@huntestates.com

Disclaimer: All information provided herein has been obtained from sources believed reliable, but may be subject to errors, omissions, change of price, prior sale, withdrawal without notice. Hunt Estates make no representation, warranty, or guarantee as to accuracy of any information contained herein. You should consult your advisors for an independent investigation of any properties. All viewings to be conducted through Hunt Estates.