



FIVE BEDROOM FIRST TIME BUYER HOME

A semi-detached, first-time buyer property located in an desirable development in Trinity. At almost 1,800 sq ft the property is a great size and offers lots of space for a growing family.

Ground floor comprising; entrance hall, good sized eat-in kitchen and sitting room with doors that open out onto the rear garden. There is also a cloakroom at ground floor level.

First floor comprising; main bedroom with en-suite shower room, two further double bedrooms (one of which is currently used as a office/gym) and a house bathroom.

The property has been extended into the loft to create two further double bedrooms and a house bathroom.

The garden is safe and enclosed being ideal for children and pets. It has raised planted borders and artificial grass needing little upkeep. It is a wonderful space to entertain family and friends in the summer months. There is a single integral garage and driveway parking for 3-4 cars.

Located in the heart of Trinity village, there is a pub/eatery, church, and grocery store within walking distance. There are lovely country lanes and cliff path walks close by to enjoy walks with family and pets and the main schools are colleges are within a 15-minute drive.

The property is presented in immaculate condition and is ready for a new family to call home. Highly recommended for viewings by the vendor's sole agent.





CHRISTIE'S
INTERNATIONAL REAL ESTATE
Hunt Estates











CHRISTIE'S
INTERNATIONAL REAL ESTATE
Homes for Sale



FEATURES

- First time buyer property
- Five bedrooms, three bathrooms
- Eat-in kitchen
- Sitting room with access out to garden
- Low maintenance rear garden
- Desirable parish of Trinity

INFORMATION

- Mains water and drains
- Electric heating and underfloor on the ground floor
- Double glazed
- Single integral garage and driveway parking for 3-4 cars
- Freehold and Entitled

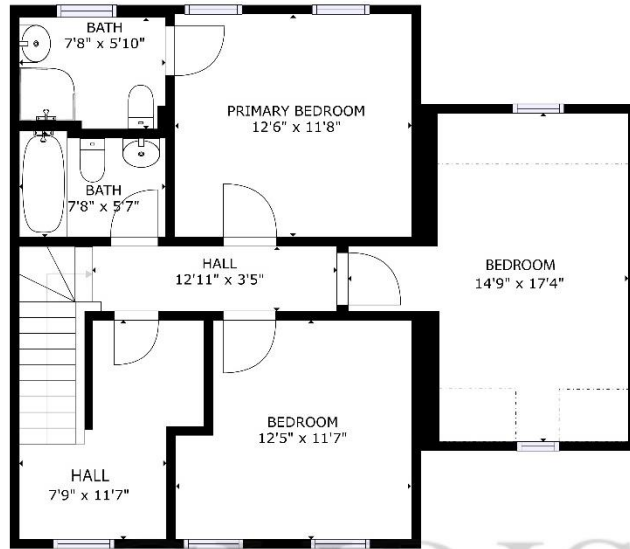


Gill Acton
Property Negotiator

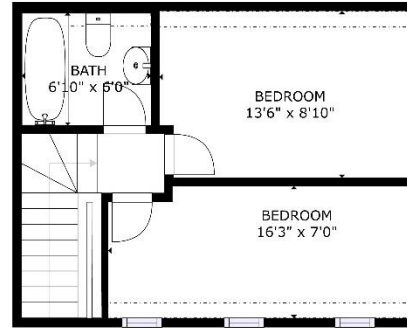
gill.acton@huntestates.com
T +44 (0)7797 961649
www.huntestates.com
9 New Street, St Helier,
Jersey, JE2 3RA

CHRISTIE'S | Hunt Estates
INTERNATIONAL REAL ESTATE

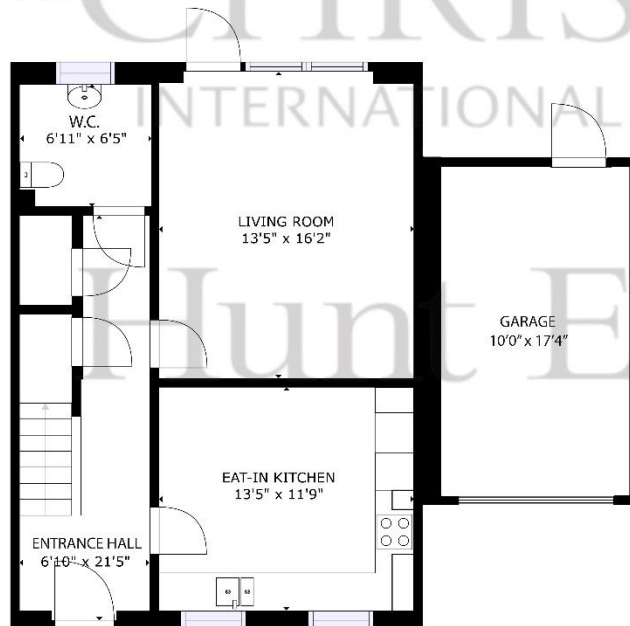




FLOOR 2



FLOOR 3



FLOOR 1

CHRISTIE'S
INTERNATIONAL REAL ESTATE
Hunt Estates

GROSS INTERNAL AREA
 FLOOR 1: 764 sq. ft, FLOOR 2: 722 sq. ft
 FLOOR 3: 306 sq. ft, EXCLUDED AREAS:
 REDUCED HEADROOM BELOW 1.5M: 77 sq. ft
 TOTAL: 1792 sq. ft

SIZES AND DIMENSIONS ARE APPROXIMATE, ACTUAL MAY VARY

As the selected exclusive affiliate of Christie's International Real Estate in Jersey, Channel Islands, Hunt Estates combines local expertise with global reach via Christie's affiliation to the most famous real estate companies in the world.

An invitation-only affiliate network, Christie's International Real Estate selected Hunt Estates in 2020 to represent the famous Christie's brand in the sphere of luxury real estate in Jersey.

CHRISTIE'S | Hunt Estates

INTERNATIONAL REAL ESTATE

9 New Street, St Helier, Jersey, JE2 3RA, Channel Islands | +44 1534 860650 | www.huntestates.com | enquiries@huntestates.com

Disclaimer: All information provided herein has been obtained from sources believed reliable, but may be subject to errors, omissions, change of price, prior sale, withdrawal without notice. Hunt Estates make no representation, warranty, or guarantee as to accuracy of any information contained herein. You should consult your advisors for an independent investigation of any properties. All viewings to be conducted through Hunt Estates.