



Hunt Estates

Rare South Coast Property Overlooking Prestigious Bay
St. Brelade, Jersey

RARE SOUTH COAST PROPERTY OVERLOOKING PRESTIGIOUS BAY

We are delighted to offer a prime seafront residence overlooking the most sought-after bay in Jersey.

Located on the western side of St. Brelade's Bay, from where it enjoys views across the entire bay, the escarpment, and beyond to Ouaisne Bay and La Cotte, its position is stunning.

The property enjoys a large plot that extends down to the high-water mark. Additionally, it owns a significant amount of natural land either side of the private road that it borders.

The existing home is on two floors with double height sitting/dining room and kitchen on the ground floor, making for a large, bright, and airy space that overlooks the bay and opens on to a terrace.

There are three bedrooms with views across the bay, including a main bedroom suite and dressing area. There is also a sunroom and a fourth bedroom/guest suite with its own entrance.

The lower ground floor provides further usable space for an office, games room, storage or 2 additional bedrooms. There is also access to the double garage.

Outside there is a large sun terrace, an outdoor swimming pool and terrace, and large lawns and plentiful parking, all with sea views.

























FEATURES

- Stunning waterfront property in St. Brelade's Bay
- Six-bedroom home
- Boundary extends to high water mark
- Large sun terrace
- Outdoor swimming pool
- Large plot and additional natural land
- Renovation or opportunity to replace with own design subject to planning permission

INFORMATION

- Mains water and septic tank
- Underfloor heating plus radiators in bedrooms
- Double garage and plentiful parking
- Tenant currently in situ
- Freehold and Entitled/Licensed

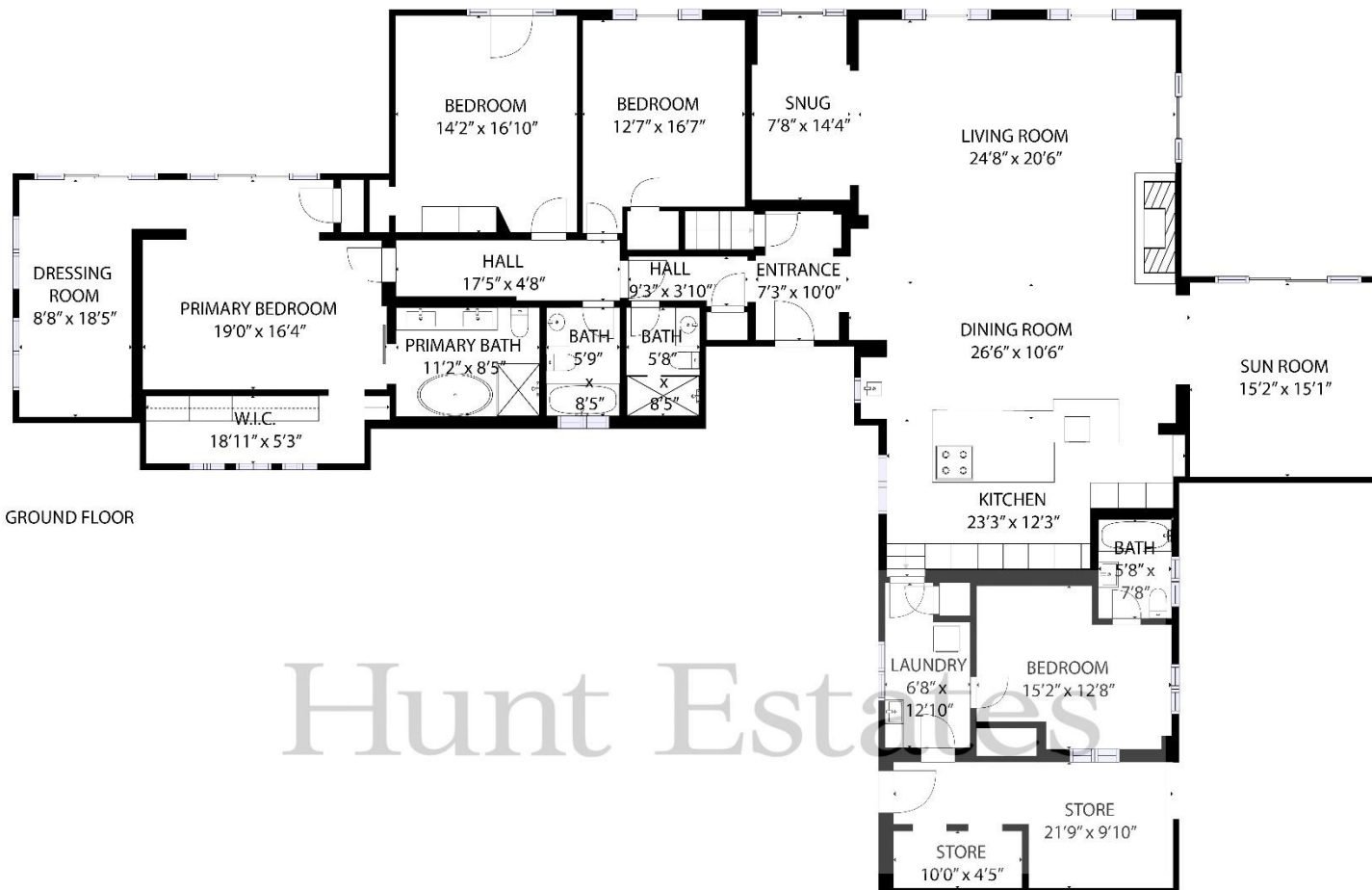


Gill Hunt, FNAEA
Director

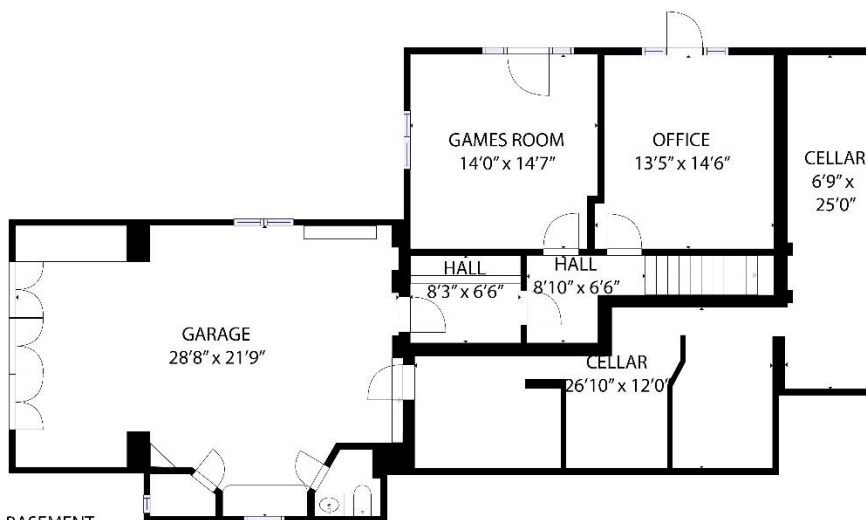
gill@huntestates.com
T +44 (0)7797 721881
www.huntestates.com
9 New Street, St Helier,
Jersey, JE2 3RA

CHRISTIE'S | Hunt Estates
INTERNATIONAL REAL ESTATE





GROUND FLOOR



BASEMENT

Hunt Estates

GROSS INTERNAL AREA
 BASEMENT: 1593 sq. ft, GROUND FLOOR : 3463 sq. ft
 TOTAL: 5056 sq. ft

SIZES AND DIMENSIONS ARE APPROXIMATE, ACTUAL MAY VARY

Hunt Estates

9 New Street, St Helier, Jersey, JE2 3RA, Channel Islands | +44 1534 860650 | www.huntestates.com | enquiries@huntestates.com

Disclaimer: All information provided herein has been obtained from sources believed reliable, but may be subject to errors, omissions, change of price, prior sale, withdrawal without notice. Hunt Estates make no representation, warranty, or guarantee as to accuracy of any information contained herein. You should consult your advisors for an independent investigation of any properties. All viewings to be conducted through Hunt Estates.