



Hunt Estates

Beautifully Presented Semi-Detached Home
St Saviour, Jersey

BEAUTIFULLY PRESENTED SEMI-DETACHED HOME ON LARGE CORNER PLOT

This modern, three-bedroom semi-detached house has great flow and is bright and airy throughout. It is located in the parish of St Saviour and is only a short drive to amenities and schools, the beach and St Helier town centre.

Ground floor comprising; entrance porch with built in seat, shoe store and hanging area, entrance hall, cloakroom, a modern fully fitted eat-in kitchen and a beautifully presented sitting room with sliding doors leading out to the garden. There is also a utility room, accessed via the garage and the garden.

First floor comprising; two double bedrooms, one single bedroom (which is currently used as an office) and a house bathroom with shower.

The garden is South/West facing and fully enclosed, therefore safe for children and pets. It is large with both patio and lawned areas. It is a wonderful area for family and friends to gather, especially in the summer months. There is also a shed for extra storage.

The property has a single garage and driveway parking for 4 cars.

There has been careful consideration into the design and decoration of this lovely home. It is presented in walk in condition and there is further scope to extend over the garage subject to planning consent.

Highly recommended for viewings by the vendor's sole agent.

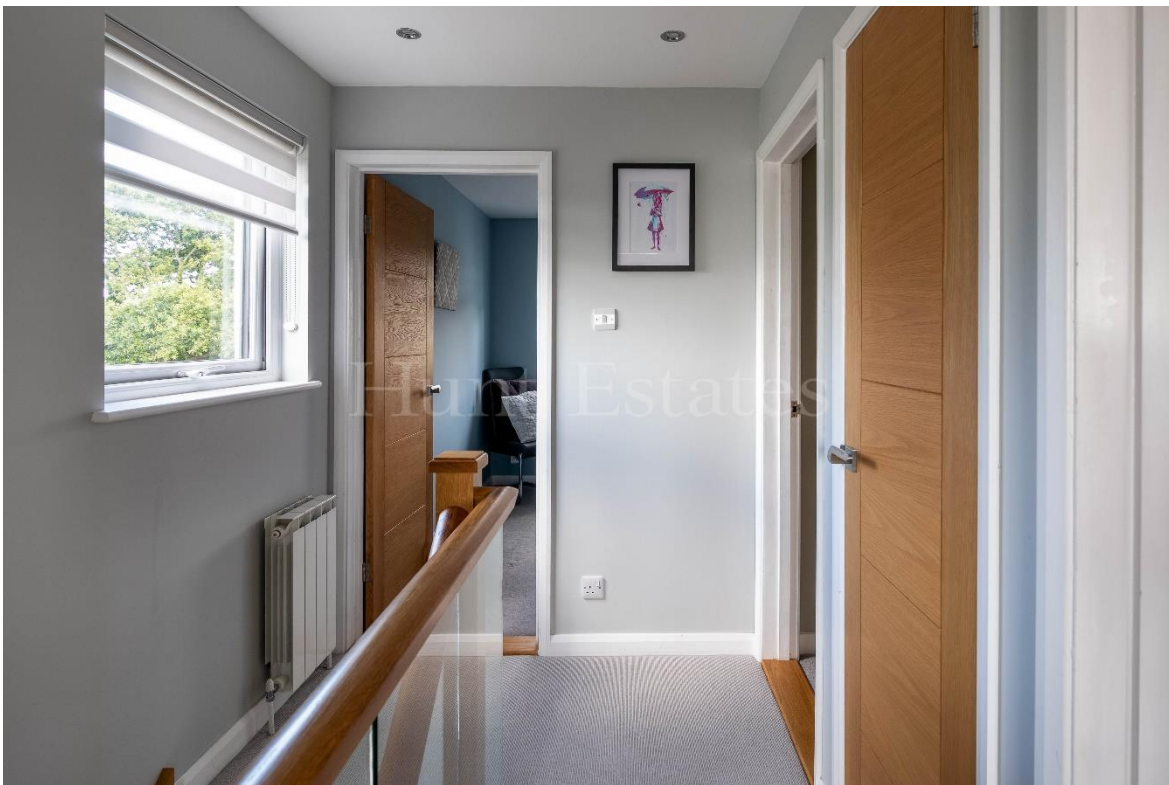
























FEATURES

- Semi-detached family house on large corner plot
- One single, two double bedrooms
- Further scope to extend over garage
- Large garden with lawned and patio areas
- Modern and beautifully presented throughout
- Close to schools, amenities, and the beach

INFORMATION

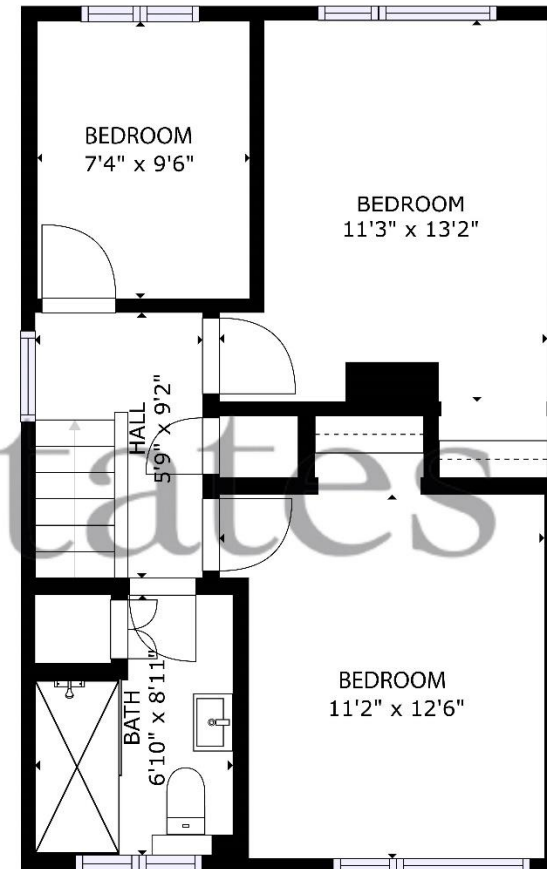
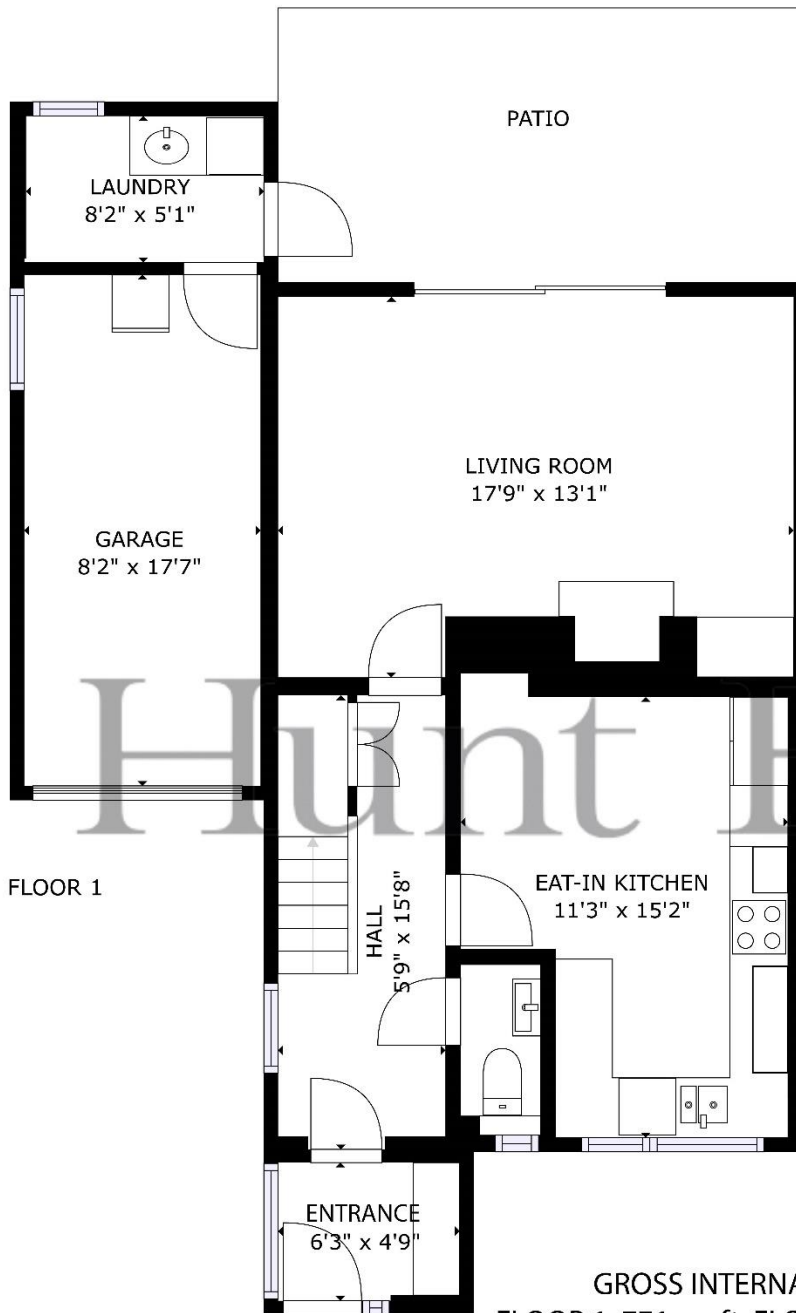
- Mains drains and water
- Oil fired central heating
- New double glazing
- Amtico flooring throughout ground floor
- Single garage and parking for 4 cars
- Freehold and Entitled



Gill Hunt, FNAEA
Director

gill@huntstates.com
T +44 (0)7797 721881
www.huntstates.com
9 New Street, St Helier,
Jersey, JE2 3RA

CHRISTIE'S | Hunt Estates
INTERNATIONAL REAL ESTATE



GROSS INTERNAL AREA
 FLOOR 1: 771 sq. ft, FLOOR 2: 506 sq. ft
 TOTAL: 1277 sq. ft

SIZES AND DIMENSIONS ARE APPROXIMATE, ACTUAL MAY VARY



Hunt Estates

9 New Street, St Helier, Jersey, JE2 3RA, Channel Islands | +44 1534 860650 | www.huntestates.com | enquiries@huntestates.com

Disclaimer: All information provided herein has been obtained from sources believed reliable, but may be subject to errors, omissions, change of price, prior sale, withdrawal without notice. Hunt Estates make no representation, warranty, or guarantee as to accuracy of any information contained herein. You should consult your advisors for an independent investigation of any properties. All viewings to be conducted through Hunt Estates.