



FAMILY HOME WITH SCOPE FOR DEVELOPMENT

This well-proportioned three-bedroom house, situated on a large plot with ample parking and large garage/workshop on the outskirts of town, is perfect for a growing family with 2 large reception rooms, separate kitchen and 3 bedrooms. The property has recently been redecorated internally and had new carpets fitted throughout, providing a great opportunity to relocate immediately.

Ground floor comprising; light and airy entrance hall, under stairs cupboard, sitting room with gas fireplace and bay window, fully fitted kitchen, good sized dining room and sunroom to the rear with access to the large garden and workshop.

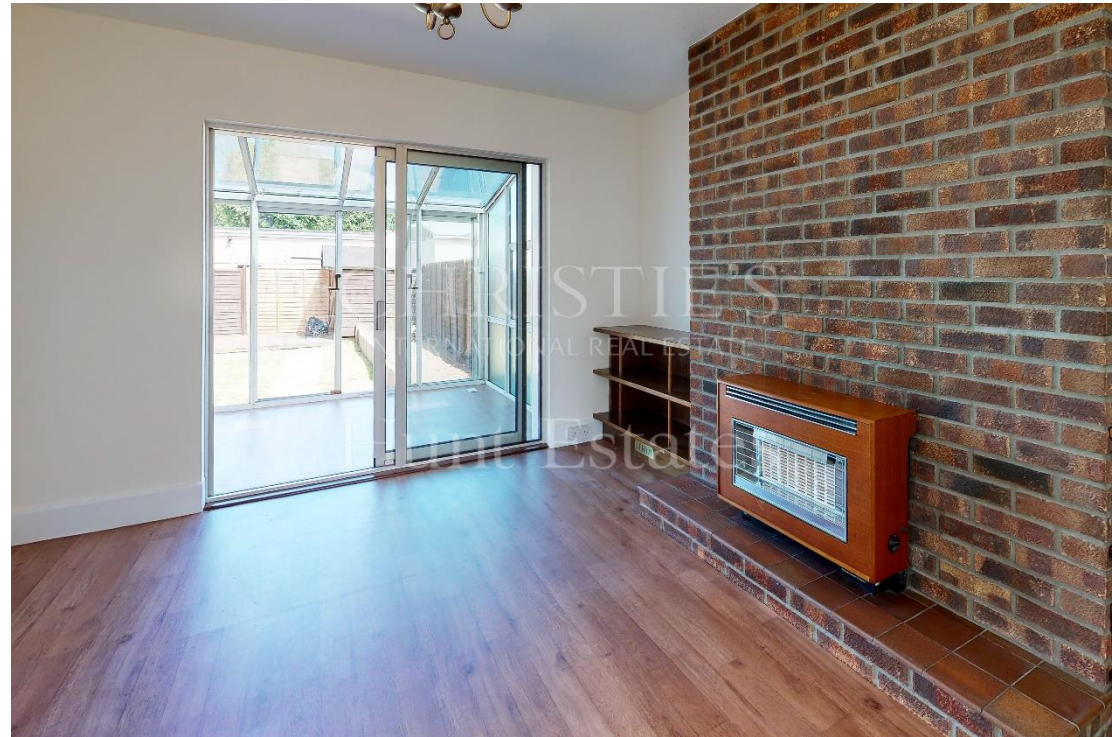
First floor comprising; two double large bedrooms, one single bedroom and a house bathroom with separate cloakroom. From the first-floor landing there is also excellent access up to the loft which is boarded throughout.

Subject to planning permission, there is scope to extend the property further, either into the loft or at ground and first floor level, to create more space for the family.





CHRISTOPHERS
INTERNATIONAL REAL ESTATE
Hunt Estates











To the rear of the property is a good sized, low maintenance, enclosed garden, with terraced and lawned areas - this is a real sun trap and a lovely space for al fresco dining in the summer months.

Most notably there is a very high garage/workshop of approx. 498 sq ft to the east of the site which has historically been the subject of a successful planning application (now lapsed) for a barn style room conversion.

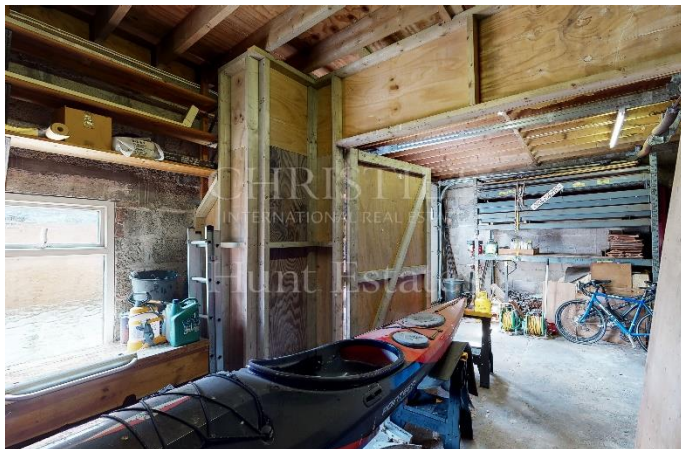
Both neighbouring properties have set the precedent by constructing second generation units in these ample sized plots.

There is forecourt and driveway parking for 6+ cars.

Situated on the outskirts of St Helier, this home is close to supermarkets, schools and is a 7-minute drive into St Helier town centre.

This property is now ready for a new family to call home and is highly recommended for viewings by the vendor's sole agent.





FEATURES

- Semi-detached family home
- Three reception rooms
- Three bedrooms
- Enclosed rear garden
- Potential to extend (subject to planning permission)
- Large garage/workshop with potential (subject to planning permission)
- Town outskirts
- Close to schools and amenities

INFORMATION

- Mains water and drains
- Mains gas
- Mostly double glazed
- Large garage/workshop
- Forecourt and driveway parking for +6 cars
- Freehold and Entitled



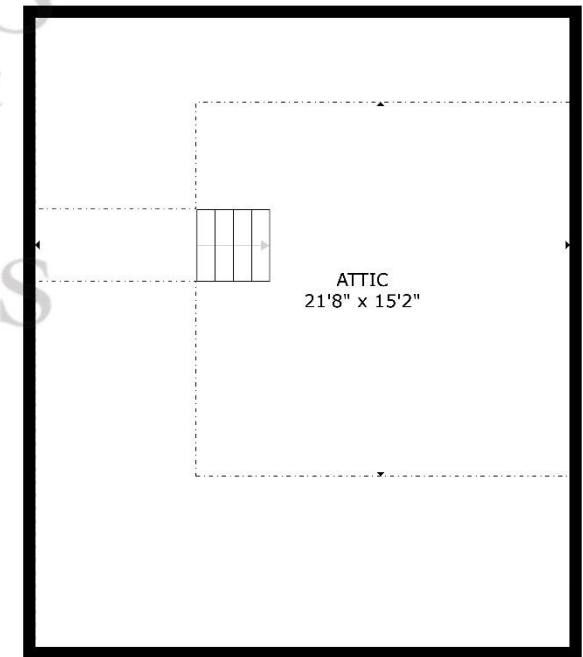
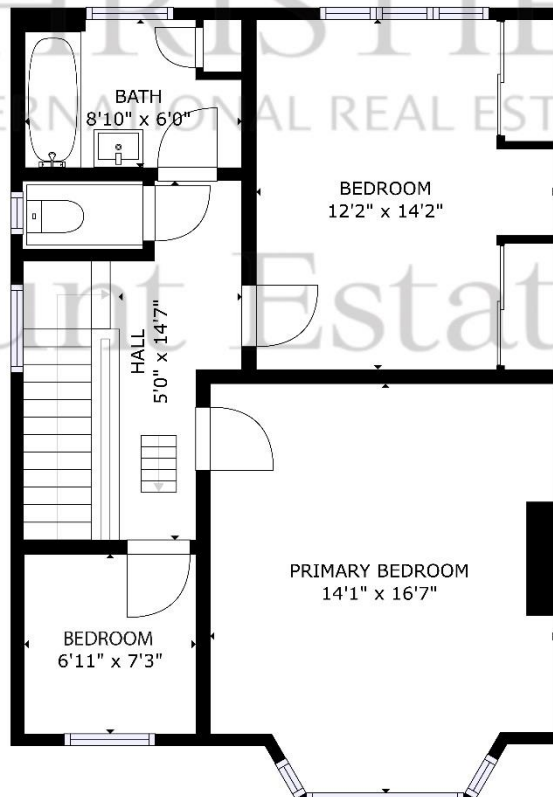
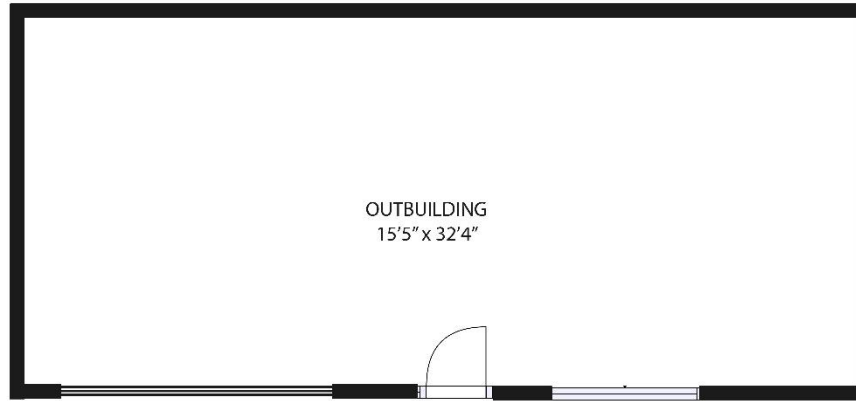
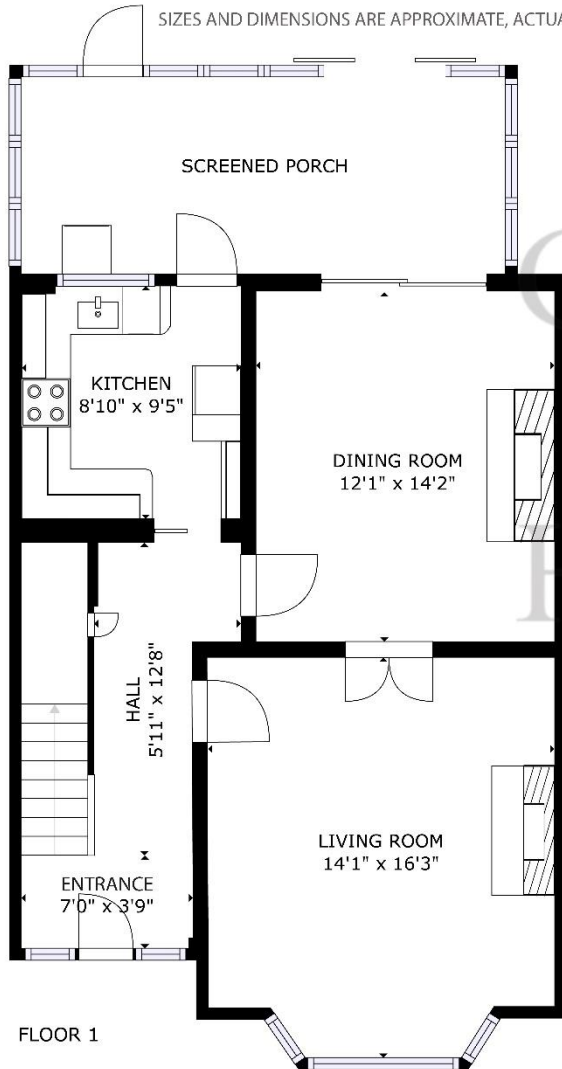
Gill Hunt, Fellow NAEA
Director

gill@huntestates.com
T +44 (0)7797 721881
www.huntestates.com
9 New Street, St Helier,
Jersey, JE2 3RA

CHRISTIE'S | Hunt Estates
INTERNATIONAL REAL ESTATE

GROSS INTERNAL AREA
 FLOOR 1: 628 sq. ft, FLOOR 2: 643 sq. ft
 FLOOR 3: 249 sq. ft, OUTBUILDING: 498 sq. ft
 EXCLUDED AREAS: , PORCH: 157 sq. ft
 REDUCED HEADROOM BELOW 1.5M: 305 sq. ft
 TOTAL: 2018 sq. ft

SIZES AND DIMENSIONS ARE APPROXIMATE, ACTUAL MAY VARY



CHRISTIE'S
 INTERNATIONAL REAL ESTATE
 Hunt Estates

As the selected exclusive affiliate of Christie's International Real Estate in Jersey, Channel Islands, Hunt Estates combines local expertise with global reach via Christie's affiliation to the most famous real estate companies in the world.

An invitation-only affiliate network, Christie's International Real Estate selected Hunt Estates in 2020 to represent the famous Christie's brand in the sphere of luxury real estate in Jersey.



CHRISTIE'S | **Hunt Estates**
INTERNATIONAL REAL ESTATE

9 New Street, St Helier, Jersey, JE2 3RA, Channel Islands | +44 1534 860650 | www.huntestates.com | enquiries@huntestates.com

Disclaimer: All information provided herein has been obtained from sources believed reliable, but may be subject to errors, omissions, change of price, prior sale, withdrawal without notice. Hunt Estates make no representation, warranty, or guarantee as to accuracy of any information contained herein. You should consult your advisors for an independent investigation of any properties. All viewings to be conducted through Hunt Estates.