



Hunt Estates

Spacious Detached House In Country Location  
St. Martin, Jersey



## SPACIOUS DETACHED HOUSE IN COUNTRY LOCATION

A detached house set in an idyllic country location in St. Martin. The property is in an elevated position overlooking green countryside.

The property offers spacious accommodation (of some 2,297 sq. ft) being perfect for the growing family. It has three reception rooms and the flexibility of utilising these as extra bedrooms if required.

Ground floor comprising entrance hall, fully fitted kitchen/breakfast room, utility room, cloakroom, sitting room with real fire and sliding doors out to the garden, dining room, reception 3, sunroom, reception 4/bedroom 4 and ground floor bathroom.

First floor comprising; three en suite bedrooms.

There is a large, fully enclosed lawned garden and patio and parking for 4-5 cars.

It is well located for easy access to the main schools of St. Michael's School, JCG, Beaulieu, De la Salle and Victoria College. It is just one minute's drive to the village with church, pub, grocery store and tearoom.

Available from mid-February 2024 to Entitled/Licensed residents.













































## FEATURES

- Detached family home
- Elevated position overlooking green countryside
- Four bedrooms, four bathrooms
- Easy access to main schools
- Close to village amenities
- Country location with lovely country lane walks

## INFORMATION

- Borehole water
- Tight tank for drains
- Oil fired central heating
- Double glazed
- Gated parking for 4/5 cars
- Regret no pets
- Occupier rates for 2023 were £439.02
- Available mid-February to Entitled/Licensed residents



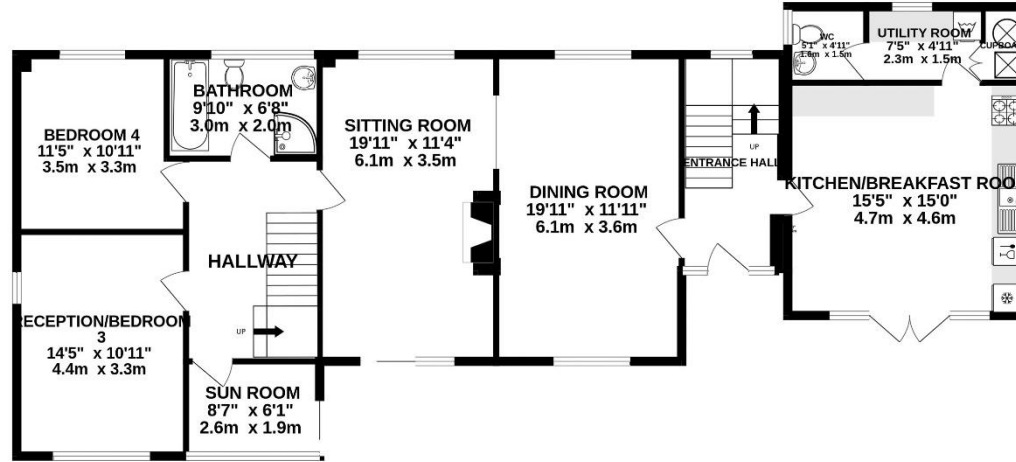
Gill Hunt, FNAEA  
Director

[gill@huntestates.com](mailto:gill@huntestates.com)  
T +44 (0)7797 721881  
[www.huntestates.com](http://www.huntestates.com)  
9 New Street, St Helier,  
Jersey, JE2 3RA

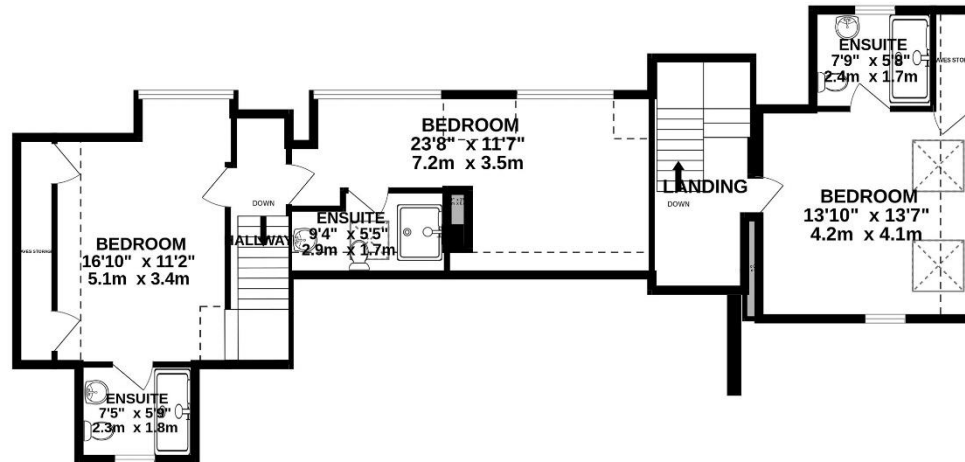
**CHRISTIE'S** | Hunt Estates  
INTERNATIONAL REAL ESTATE



GROUND FLOOR  
1349 sq.ft. (125.3 sq.m.) approx.



1ST FLOOR  
937 sq.ft. (87.1 sq.m.) approx.



TOTAL FLOOR AREA : 2286 sq.ft. (212.4 sq.m.) approx.

Whilst every attempt has been made to ensure the accuracy of the floorplan contained here, measurements of doors, windows, rooms and any other items are approximate and no responsibility is taken for any error, omission or mis-statement. This plan is for illustrative purposes only and should be used as such by any prospective purchaser. The services, systems and appliances shown have not been tested and no guarantee as to their operability or efficiency can be given.



# Hunt Estates

9 New Street, St Helier, Jersey, JE2 3RA, Channel Islands | +44 1534 860650 | [www.huntestates.com](http://www.huntestates.com) | [enquiries@huntestates.com](mailto:enquiries@huntestates.com)

Disclaimer: All information provided herein has been obtained from sources believed reliable, but may be subject to errors, omissions, change of price, prior sale, withdrawal without notice. Christie's Hunt Estates make no representation, warranty, or guarantee as to accuracy of any information contained herein. You should consult your advisors for an independent investigation of any properties. All viewings to be conducted through Christie's Hunt Estates.