



**Hunt Estates**

Stunning Apartment with Wonderful Views Over St. Aubin's Bay  
St. Helier, Jersey

## STUNNING APARTMENT WITH WONDERFUL VIEWS OVER ST. AUBIN'S BAY

A beautifully presented, fully furnished, purpose-built apartment with wonderful sea views of the whole of St Aubins Bay.

There are full height floor to ceiling windows with sliding door to balcony. The balcony expands the whole width of the apartment and is large enough to seat 4-6 people for al-fresco dining.

Comprises: good size entrance hall, cloakroom/utility room, storeroom, open plan sitting room/dining room/kitchen which is fitted with appliances, two double bedrooms, both being en-suite.

There is easy access to town and all amenities. Enjoy restaurants, cafes, the beach, promenade walks and hotel facilities, which are all close by.

There is a lift service, secure gated communal parking for 2 cars (tandem) in addition to external communal visitor parking, and a storeroom.



























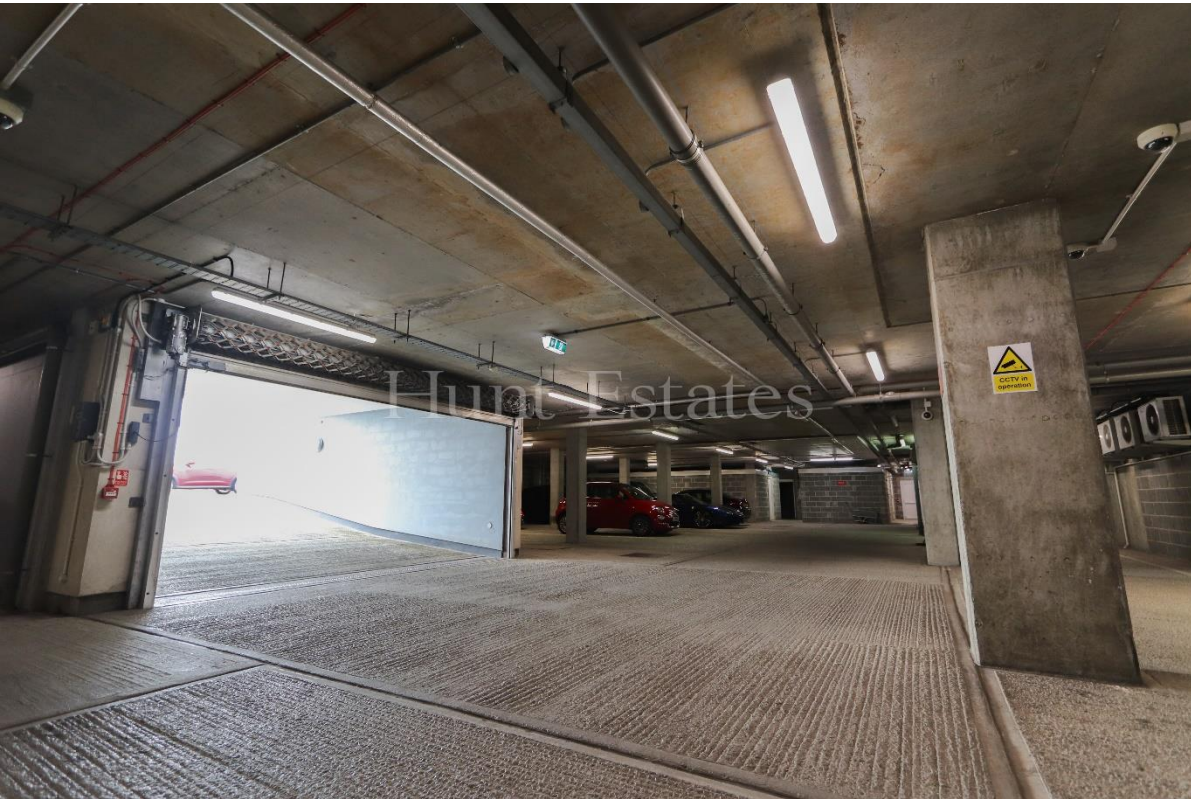














## FEATURES

- Contemporary apartment
- Light and airy interior
- 2 large en-suite bedrooms
- Open plan kitchen/sitting/dining room
- Breathtaking views across the Bay
- Store cupboard

## INFORMATION

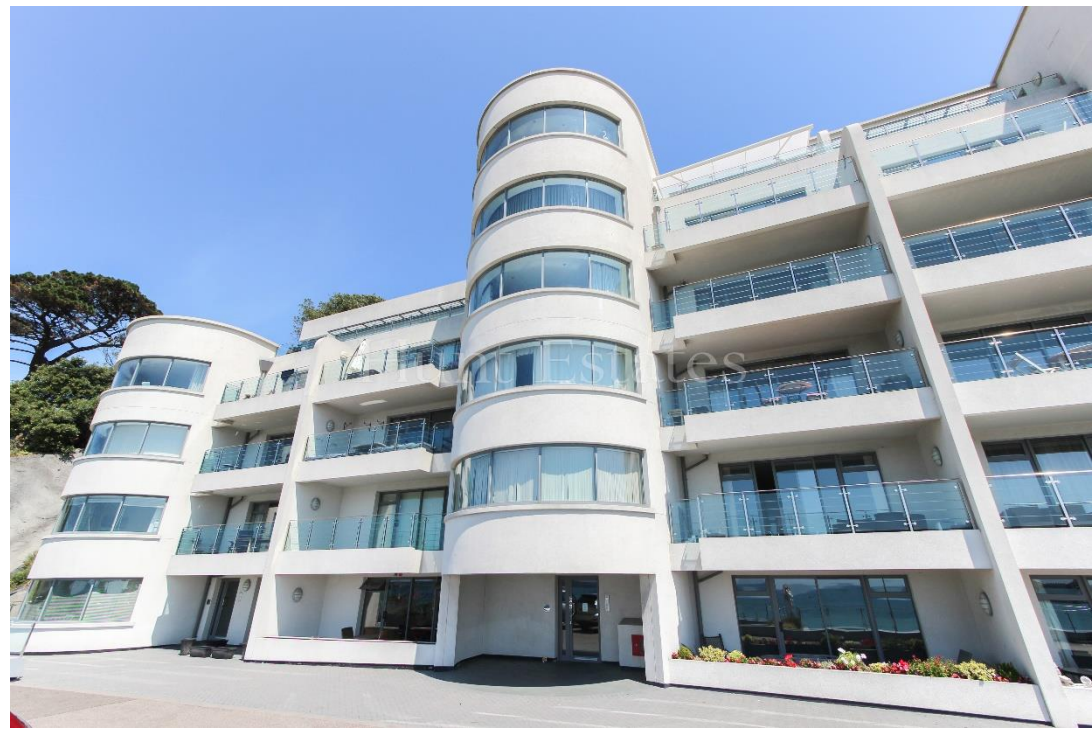
- Mains water and drains
- Electric heating
- Double glazed
- 2 secure gated parking spaces (tandem)
- Visitor parking available
- Regret no pets
- Fully furnished
- Minimum 2-year lease required
- Available immediately to Entitled/Licensed residents
- Please note that the equivalent of one month's rent is required for the deposit



Gill Hunt, FNAEA  
Director

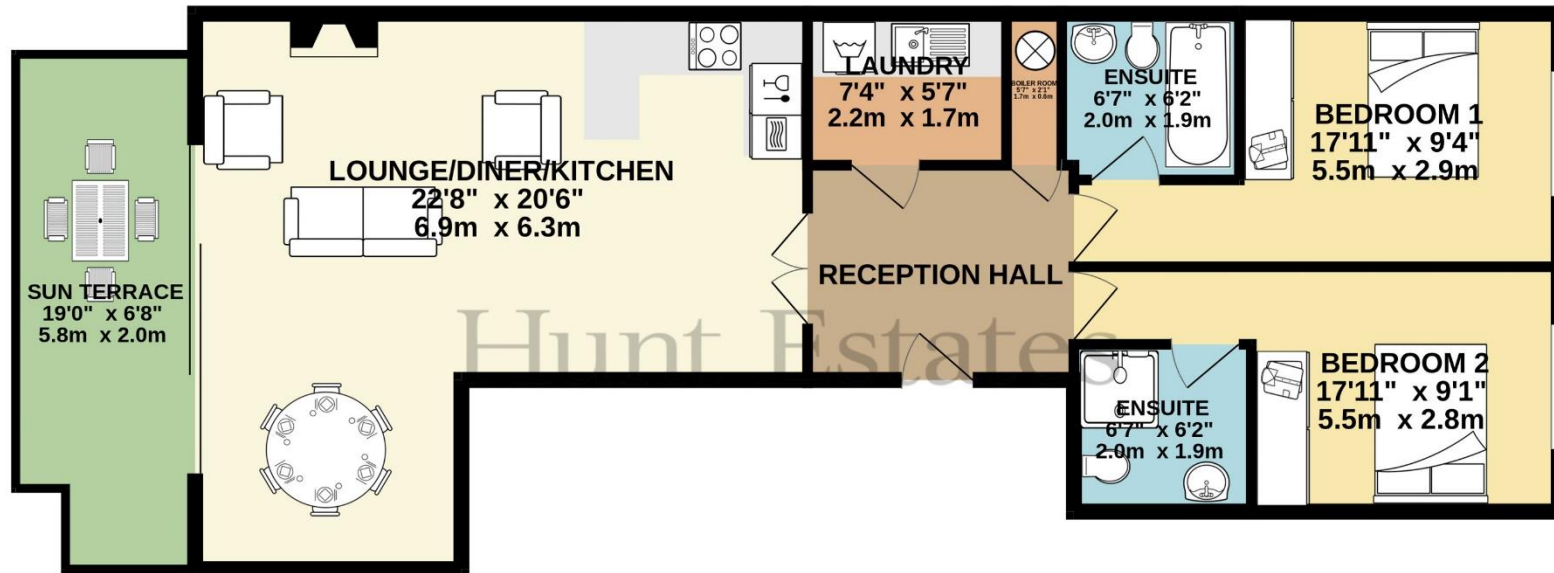
[gill@huntstates.com](mailto:gill@huntstates.com)  
T +44 (0)7797 721881  
[www.huntstates.com](http://www.huntstates.com)  
9 New Street, St Helier,  
Jersey, JE2 3RA

CHRISTIE'S | Hunt Estates  
INTERNATIONAL REAL ESTATE





## SECOND FLOOR 834 sq.ft. (77.5 sq.m.) approx.



2 BED APT

TOTAL FLOOR AREA : 834 sq.ft. (77.5 sq.m.) approx.

Whilst every attempt has been made to ensure the accuracy of the floorplan contained here, measurements of doors, windows, rooms and any other items are approximate and no responsibility is taken for any error, omission or mis-statement. This plan is for illustrative purposes only and should be used as such by any prospective purchaser. The services, systems and appliances shown have not been tested and no guarantee as to their operability or efficiency can be given.

Made with Metropix ©2024

# Hunt Estates

9 New Street, St Helier, Jersey, JE2 3RA, Channel Islands | +44 1534 860650 | [www.huntestates.com](http://www.huntestates.com) | [enquiries@huntestates.com](mailto:enquiries@huntestates.com)

Disclaimer: All information provided herein has been obtained from sources believed reliable, but may be subject to errors, omissions, change of price, prior sale, withdrawal without notice. Hunt Estates make no representation, warranty, or guarantee as to accuracy of any information contained herein. You should consult your advisors for an independent investigation of any properties. All viewings to be conducted through Hunt Estates.