



Hunt Estates

Prestigious Apt Overlooking The Royal Jersey Golf Course
Grouville, Jersey

PRESTIGIOUS APT OVERLOOKING THE ROYAL JERSEY GOLF COURSE

A most desirable, fully furnished quality purpose-built luxury apartment available immediately for rental.

With stunning views overlooking the golf-green, the coast and beyond to the historic Mont Orgueil Castle, one can step out from the sitting room on to the balcony and enjoy the view. In addition, a further balcony can be accessed from both bedrooms overlooking the inner courtyard and manicured communal gardens.

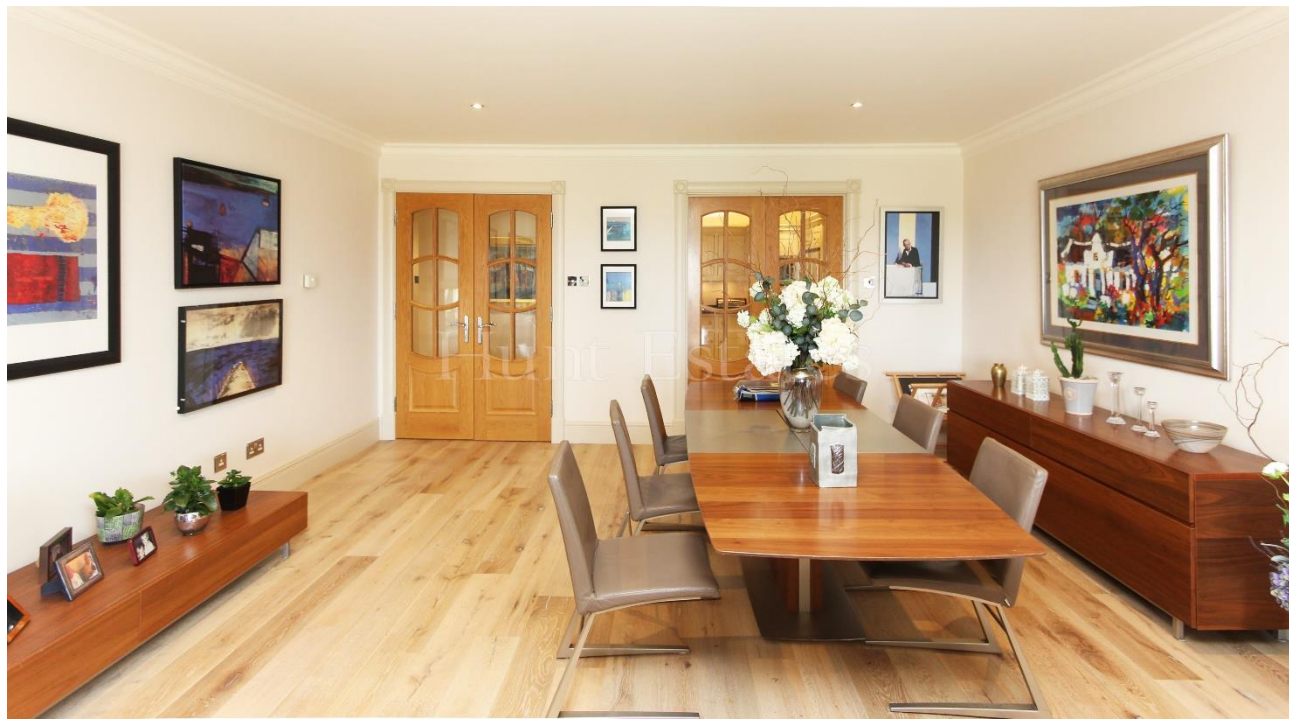
There is a generous size and welcoming entrance hall and good ceiling height to the whole apartment giving a feeling of spaciousness throughout. There is a large well-equipped kitchen with Miele appliances, two store cupboards in the hall, two bedrooms, both of which are en-suite and have access to a balcony, a separate utility room and separate cloakroom for guests.

Externally, there are two undercover parking spaces in a communal parking area, accessed through electric gates and exterior visitor parking.

This wonderful apartment is available to rent from 1st December to Entitled/Licensed residents.

















FEATURES

- Luxury apartment
- Overlooking golf course & sea
- Large sitting room
- Well equipped kitchen
- High specification en suite bathrooms
- Two balconies
- Separate utility room

INFORMATION

- Mains water and drains
- Electric under floor heating
- Double glazed
- Lift access
- On site caretaker
- Car washing bays
- Two undercover parking spaces and ample visitor parking
- External store cupboard behind parking
- Occupier rates for 2022 were £435.48
- Available from 1st December 2024 to Entitled/Licensed residents
- Please note that the equivalent of one month's rent will be required for the deposit



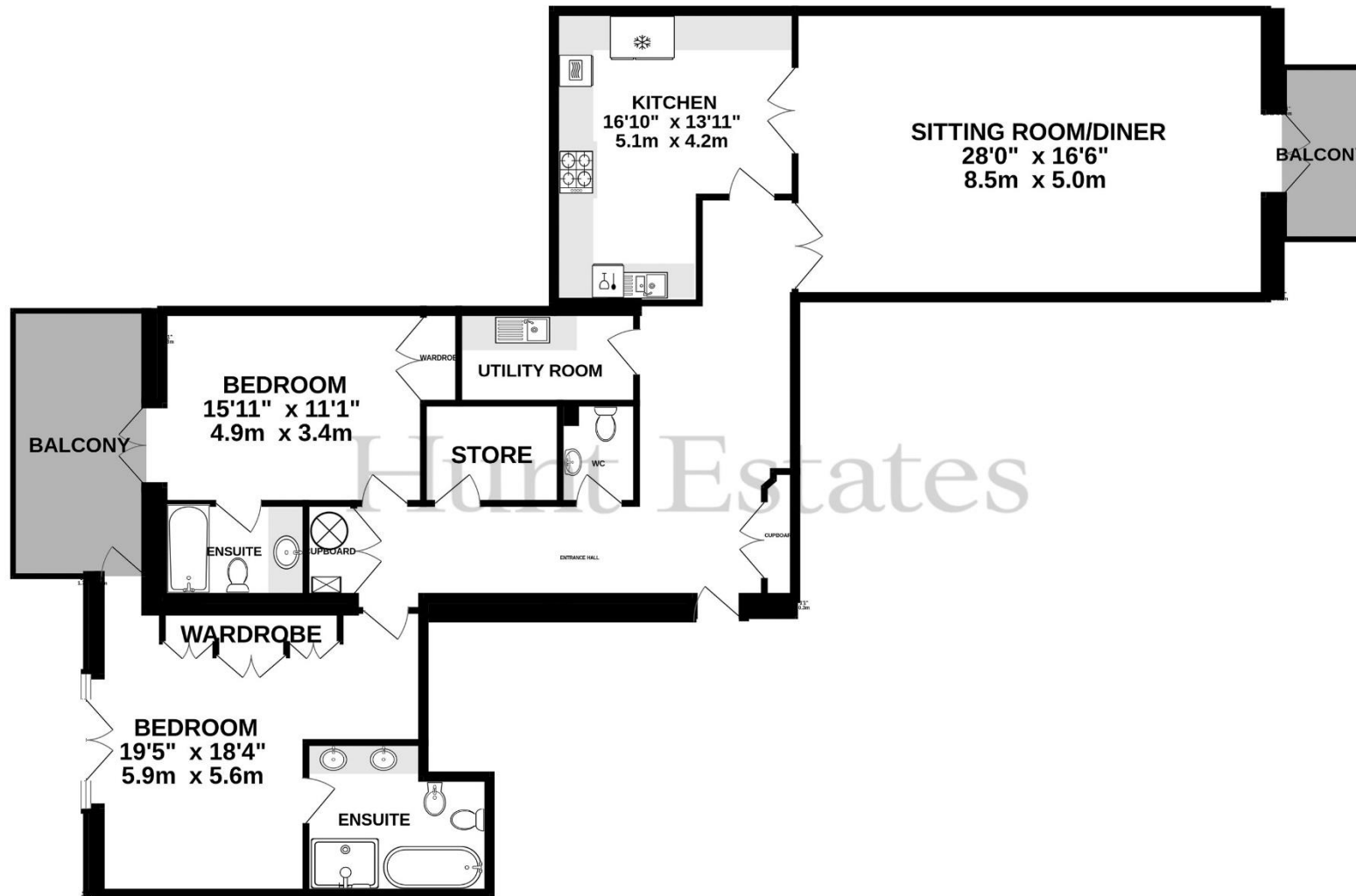
Gill Hunt, FNAEA
Director

gill@huntestates.com
T +44 (0)7797 721881
www.huntestates.com
9 New Street, St Helier,
Jersey, JE2 3RA

CHRISTIE'S | Hunt Estates
INTERNATIONAL REAL ESTATE

GROUND FLOOR

1642 sq.ft. (152.5 sq.m.) approx.



TOTAL FLOOR AREA : 1642 sq.ft. (152.5 sq.m.) approx.

Whilst every attempt has been made to ensure the accuracy of the floorplan contained here, measurements of doors, windows, rooms and any other items are approximate and no responsibility is taken for any error, omission or mis-statement. This plan is for illustrative purposes only and should be used as such by any prospective purchaser. The services, systems and appliances shown have not been tested and no guarantee as to their operability or efficiency can be given.

Made with Metropix ©2023

Hunt Estates

9 New Street, St Helier, Jersey, JE2 3RA, Channel Islands | +44 1534 860650 | www.huntestates.com | enquiries@huntestates.com

Disclaimer: All information provided herein has been obtained from sources believed reliable, but may be subject to errors, omissions, change of price, prior sale, withdrawal without notice. Christie's Hunt Estates make no representation, warranty, or guarantee as to accuracy of any information contained herein. You should consult your advisors for an independent investigation of any properties. All viewings to be conducted through Christie's Hunt Estates.